

FRONT ELEVATIONS



TRT6



TRT7



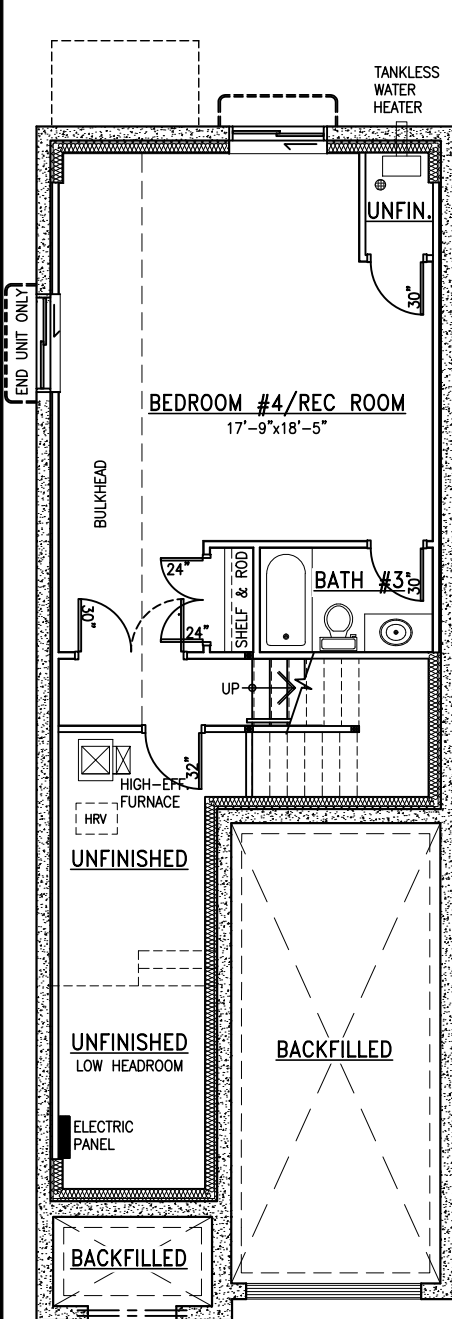


The Logan

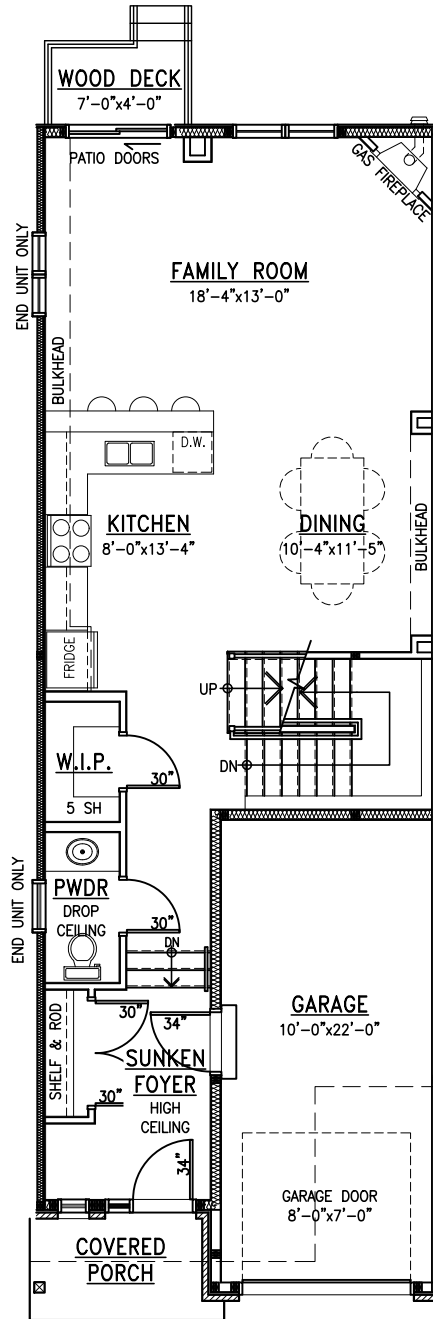
Middle or End Unit

2235 ft² (Incl. 435 ft² Finished Basement)

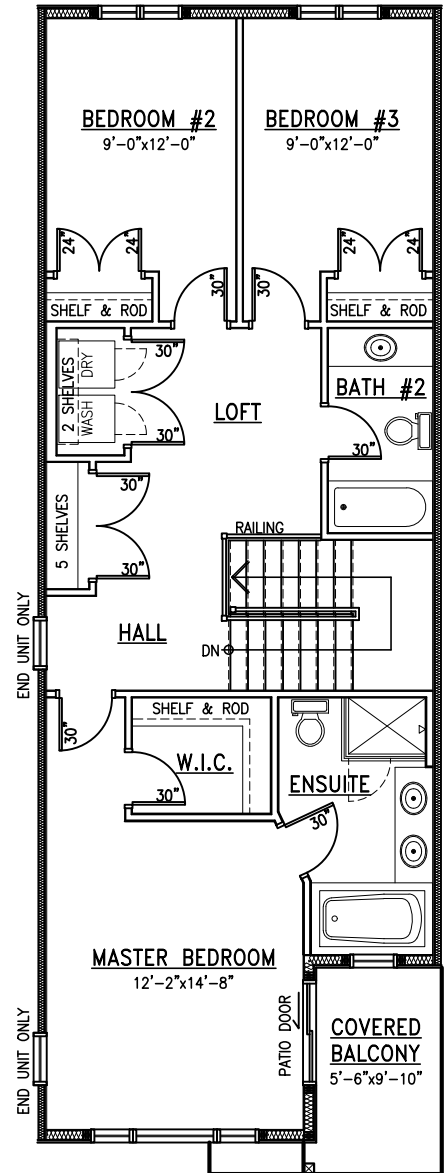
4 Bedroom



Basement



Main Floor



Second Floor

All measurements are approximate. Bulkhead and mechanical box locations may vary. Actual usable floor space may vary from stated floor area.

Plans and specifications are subject to change without notice. E.&O.E. REV October 12, 2021

www.MetricHomes.com



613-296-7000

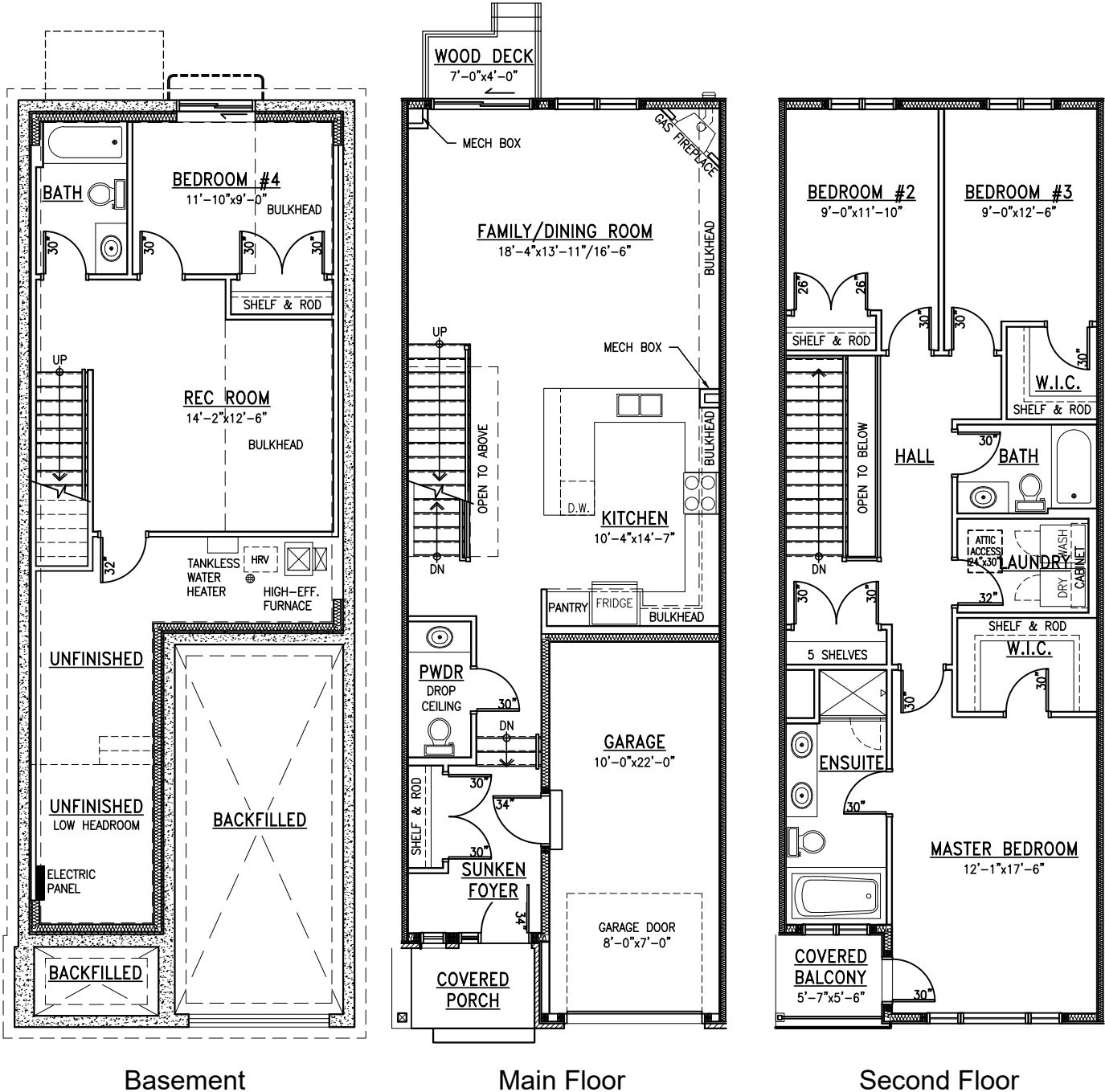


The Kara I

Middle Unit

2195 ft² (Incl. 400 ft² Finished Basement)

4 Bedroom



All measurements are approximate. Bulkhead and mechanical box locations may vary. Actual usable floor space may vary from stated floor area.

Plans and specifications are subject to change without notice. E.&O.E. REV May 19, 2023

www.MetricHomes.com



613-296-7000

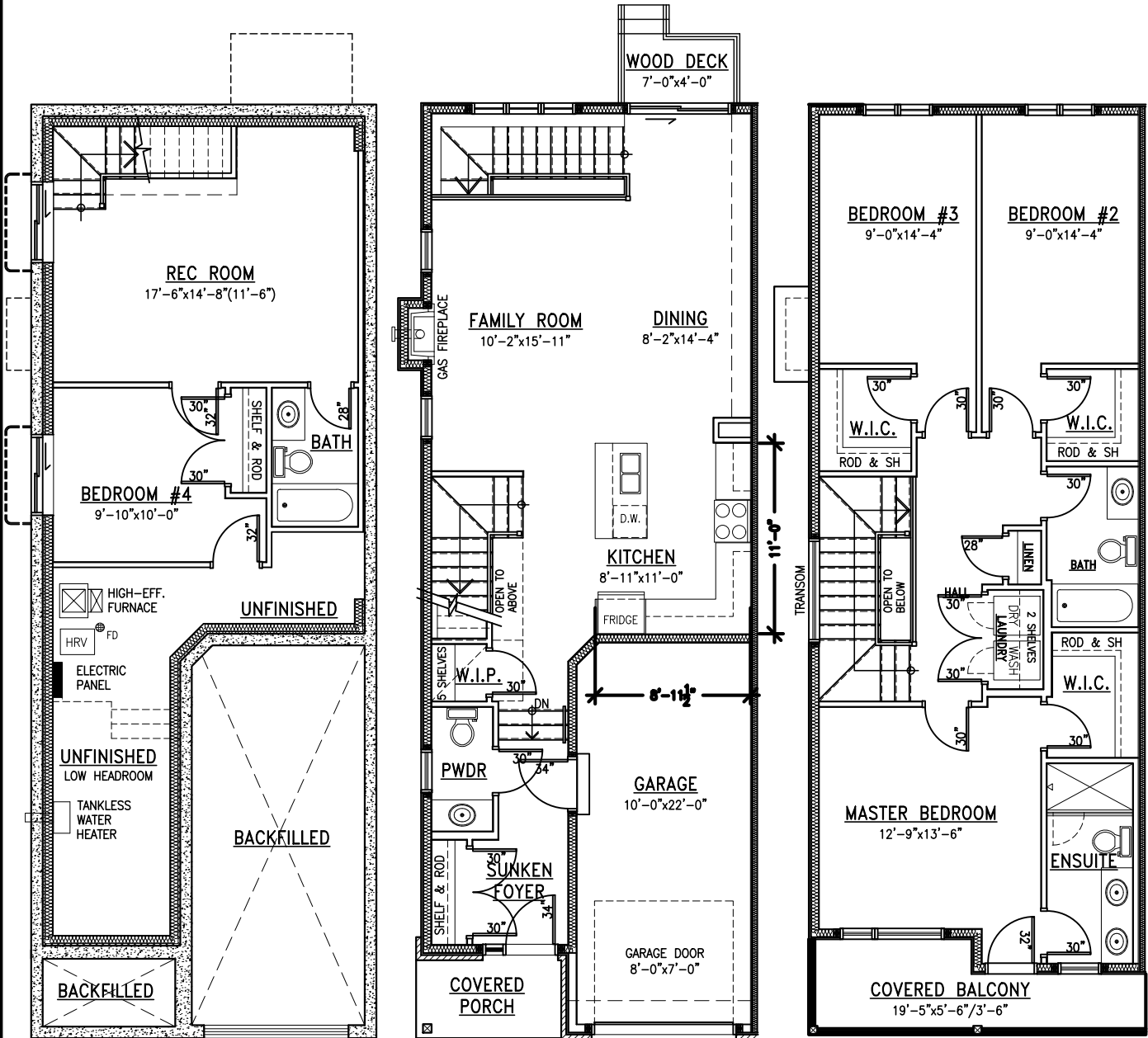


The Chloe (v2)

End Unit Only

2130 ft² (Incl. 400 ft² Finished Basement)

4 Bedroom



Basement

Main Floor

Second Floor

All measurements are approximate. Bulkhead and mechanical box locations may vary. Actual usable floor space may vary from stated floor area.

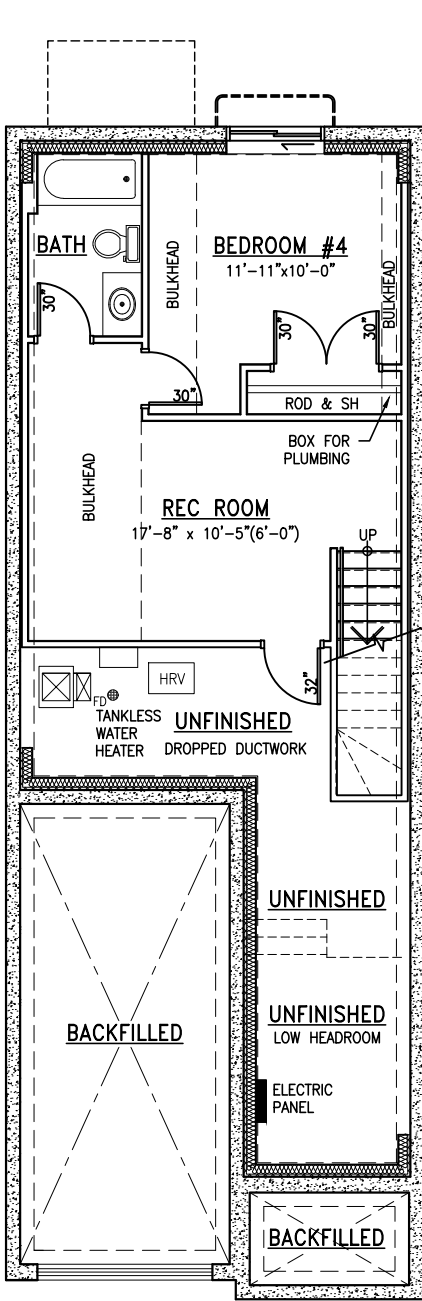
Plans and specifications are subject to change without notice. E.&O.E. REV October 12, 2021



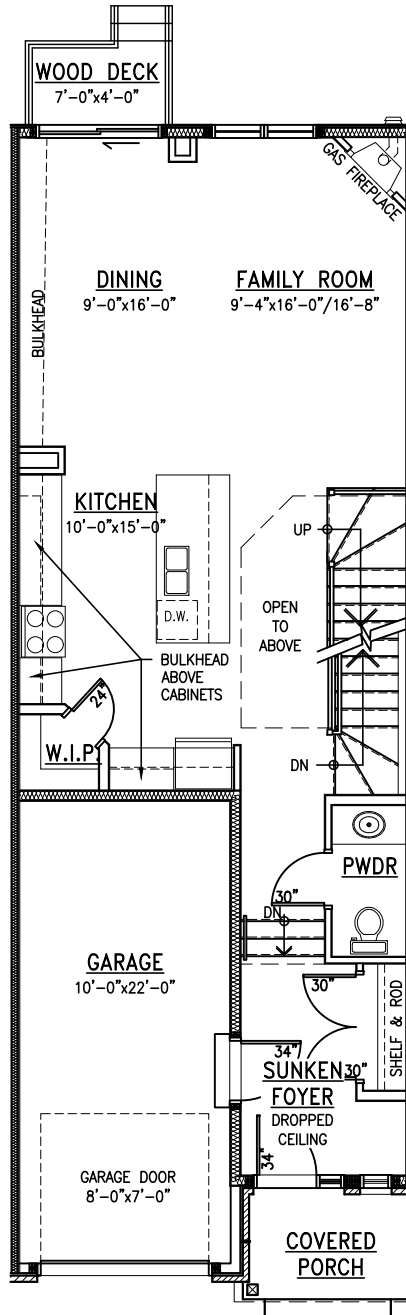


The Andrea I

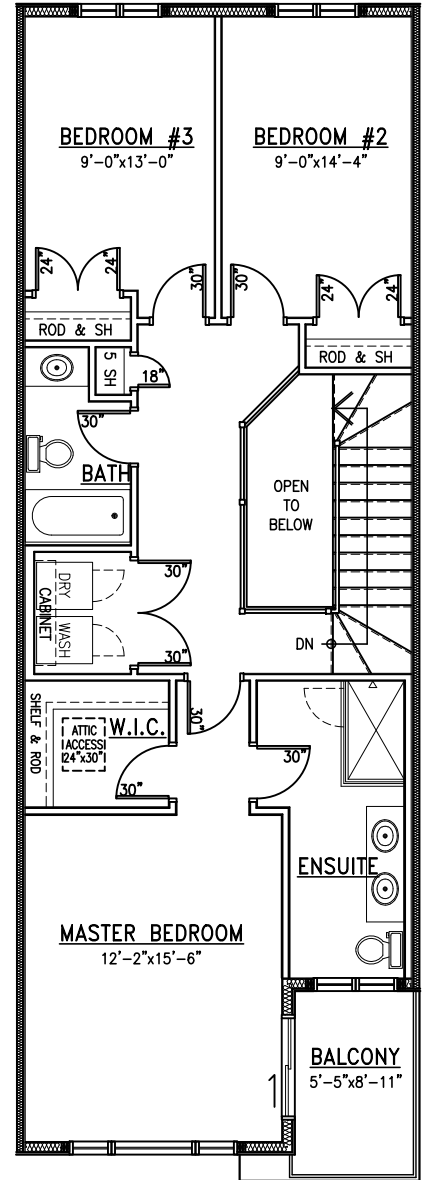
Middle Unit
 2200 ft² (Incl. 405 ft² Finished Basement)
 4 Bedroom



Basement



Main Floor



Second Floor

All measurements are approximate. Bulkhead and mechanical box locations may vary. Actual usable floor space may vary from stated floor area.

Plans and specifications are subject to change without notice. E.&O.E. REV October 12, 2021





The Elyse II (v2)

End Unit

2285 ft² (Incl. 400 ft² Finished Basement)

4 Bedroom



Basement

Main Floor

Second Floor

All measurements are approximate. Bulkhead and mechanical box locations may vary. Actual usable floor space may vary from stated floor area.

Plans and specifications are subject to change without notice. E.&O.E. REV October 12, 2021

www.MetricHomes.com



613-296-7000