



## Income & Multi-Generational Homes



The Richmond



The Kanata

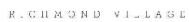


The London III

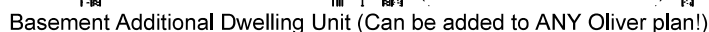


The Windsor





~~PLUS 625 SQ FT ADU~~



613-296-7000



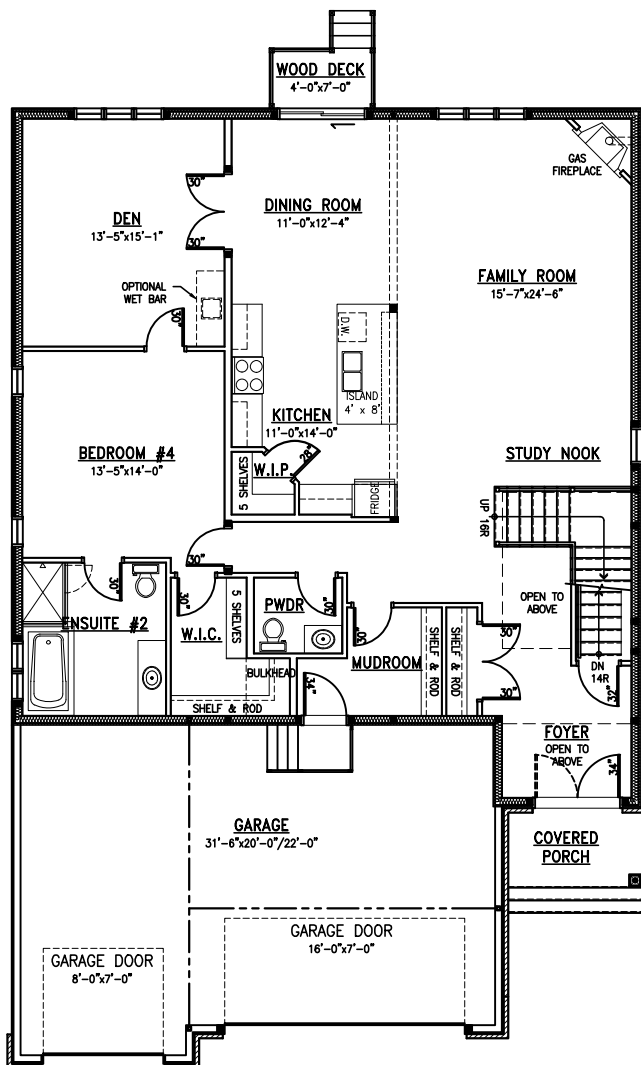
## The Jayce I

Minimum lot width: 50 FT

House Depth: 64 FT

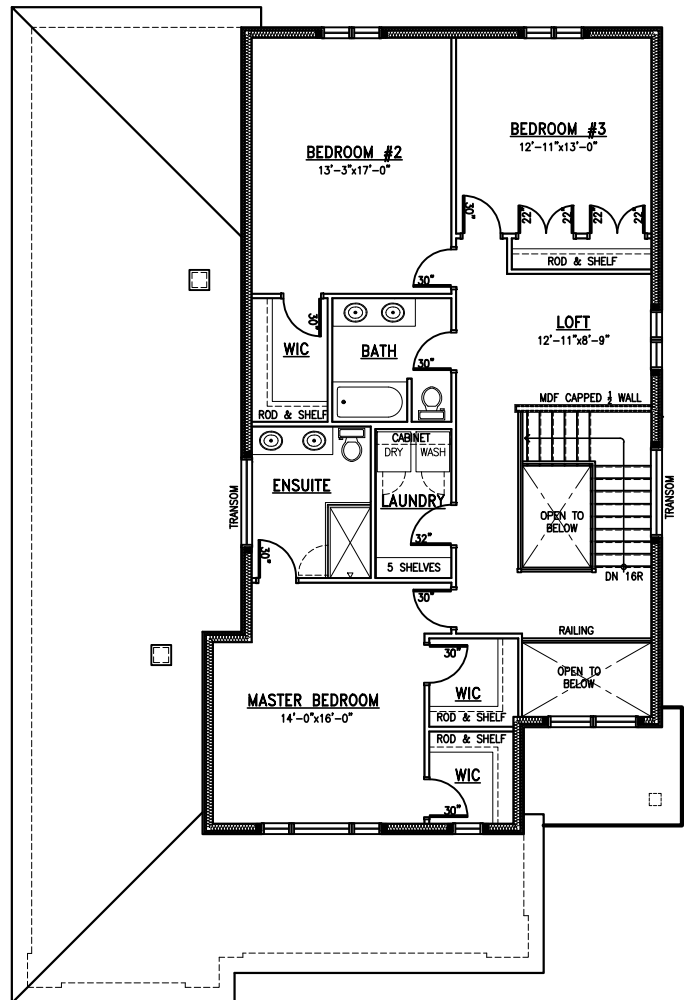
3,235 SQ FT

Incl. 75 SQ FT open to below



Main Floor  
1,770 SQ FT

All measurements are approximate.  
Actual usable floor space may vary from stated floor area.



Second Floor  
1,465 SQ FT

Plans and specifications are subject to change without notice. E.&O.E.  
March 27, 2023

MetricHomes.com



613-296-7000



RICHMOND VILLAGE



## The Jayce I w/ Additional Dwelling Unit

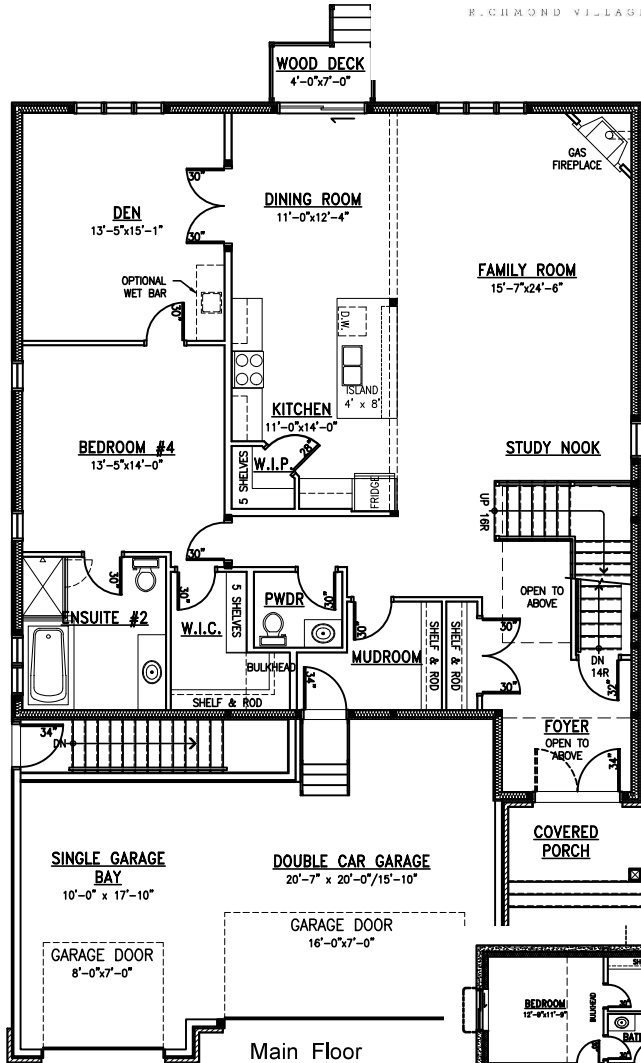
Minimum lot width: 50 FT

House Depth: 66 FT

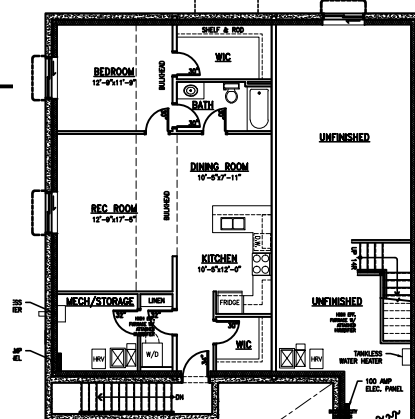
3,235 SQ FT

Incl. 75 SQ FT open to below

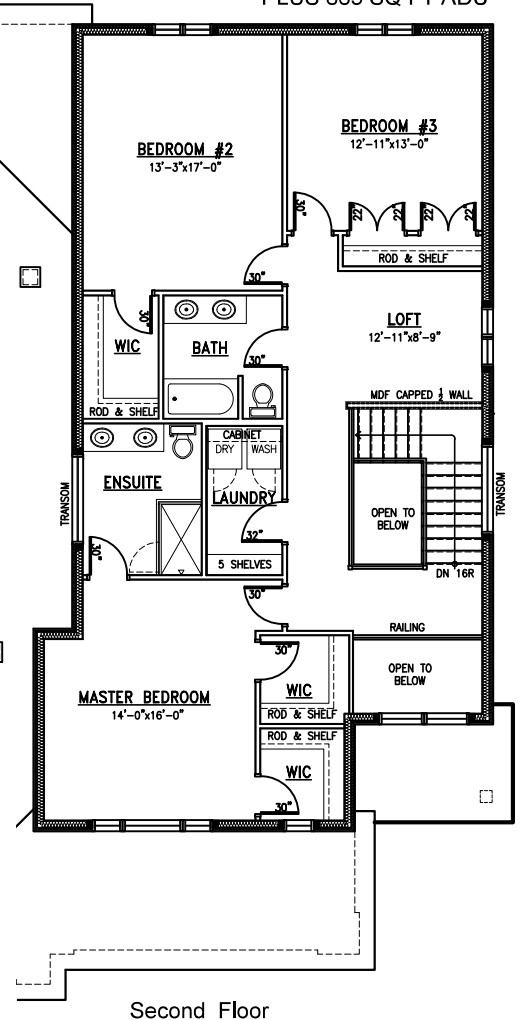
PLUS 865 SQ FT ADU



Main Floor



Basement Additional Dwelling Unit



Second Floor

All measurements are approximate.  
Actual usable floor space may vary from stated floor area.

Plans and specifications are subject to change without notice, E.&O.E.  
Brochure Plan - September 3, 2024

MetricHomes.com



613-296-7000





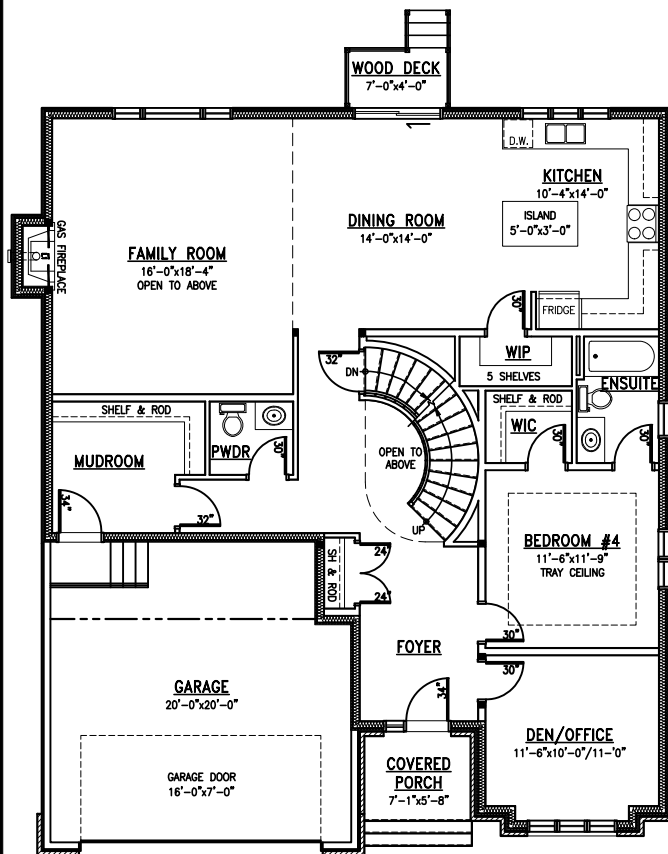
## The William IV

Minimum lot width: 50 FT

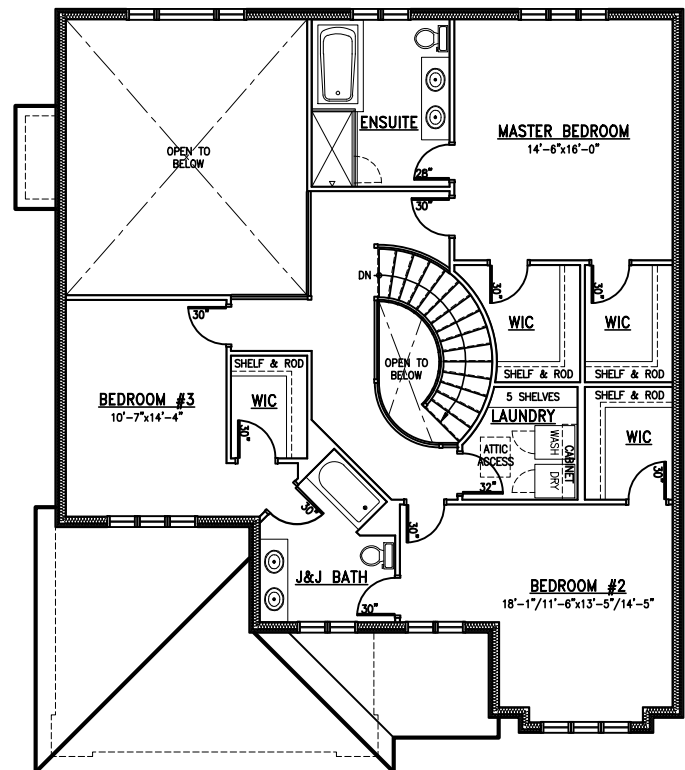
House Depth: apx. 50 FT

3,280 SQ FT

Incl. 325 SQ FT open to below



MainFloor



Second Floor

All measurements are approximate.  
Actual usable floor space may vary from stated floor area.

Plans and specifications are subject to change without notice. E.&O.E.  
May 2, 2023

MetricHomes.com



613-296-7000



**Incl. 15 SQ FT open to below**



Plans and specifications are subject to change without notice. E.&O.E.  
April 5, 2023



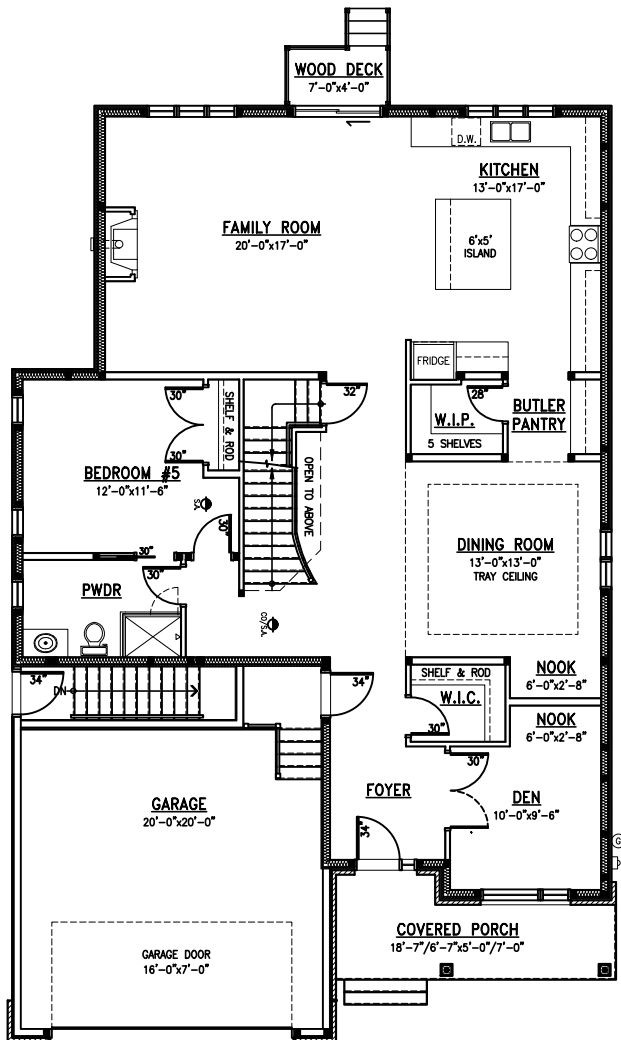
## The Noah w/ Additional Dwelling Unit

Minimum lot width: 50 FT

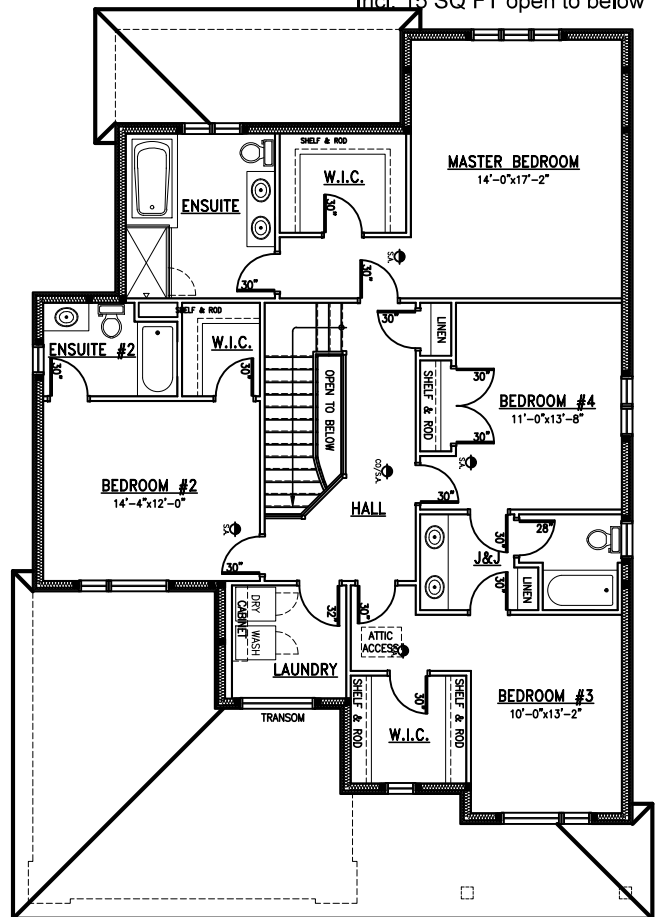
House Depth: apx. 63 FT

3,285 SQ FT

Incl. 15 SQ FT open to below



Main Floor



Second Floor

All measurements are approximate.  
Actual usable floor space may vary from stated floor area.

Plans and specifications are subject to change without notice. E.&O.E.  
Brochure Plan - September 4, 2024

MetricHomes.com



613-296-7000



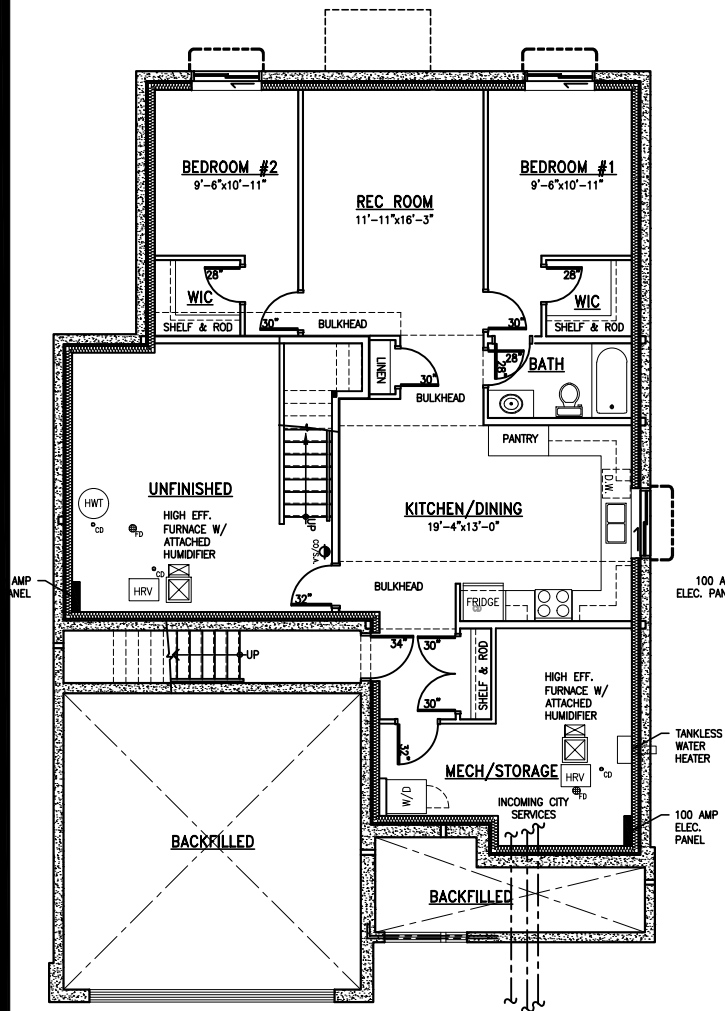
## The Noah w/ Additional Dwelling Unit

Minimum lot width: 50 FT

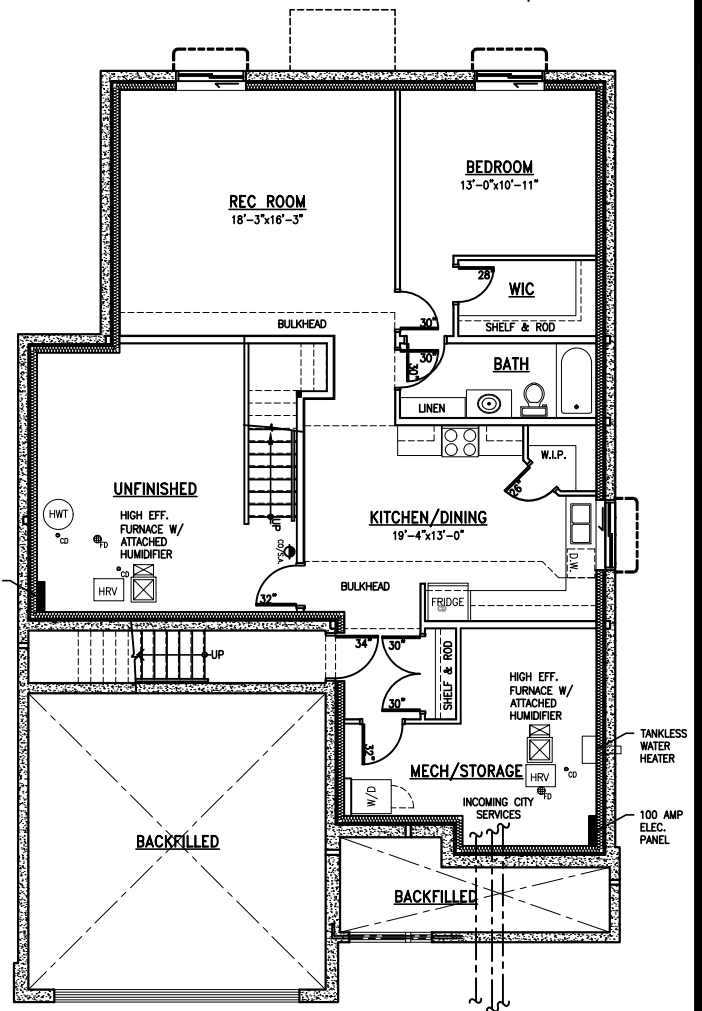
House Depth: apx. 63 FT

3,285 SQ FT

Incl. 15 SQ FT open to below



Basement Additional Dwelling Unit (Two-Bedroom)  
950 SQ FT



Basement Additional Dwelling Unit (One-Bedroom)  
950 SQ FT

All measurements are approximate.  
Actual usable floor space may vary from stated floor area.

Plans and specifications are subject to change without notice. E.&O.E.  
Brochure Plan - September 4, 2024

MetricHomes.com



613-296-7000

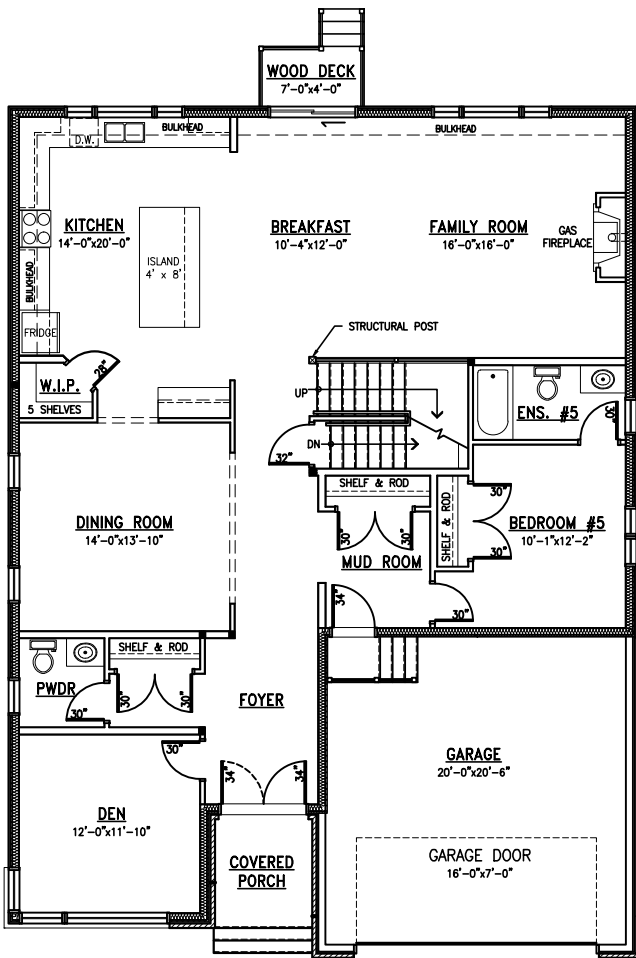


## The Carson III

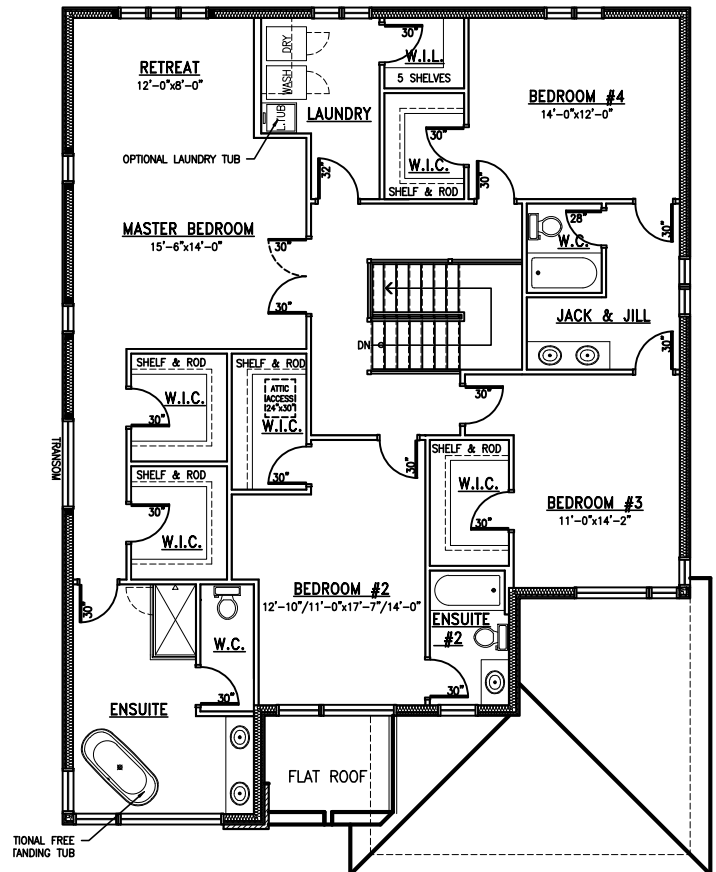
Minimum lot width: 50 FT

House Depth: apx. 57 FT

3,785 SQ FT



Main Floor



Second Floor

All measurements are approximate.  
Actual usable floor space may vary from stated floor area.

Plans and specifications are subject to change without notice. E.&O.E.  
April 20, 2023

MetricHomes.com



613-296-7000



House Depth: apx. 61 FT

3,785 SQ FT

PLUS 810 SQ FT ADU



All measurements are approximate.  
Actual usable floor space may vary from stated floor area.

Plans and specifications are subject to change without notice. E.&O.E.  
Brochure Plan - September 3, 2024

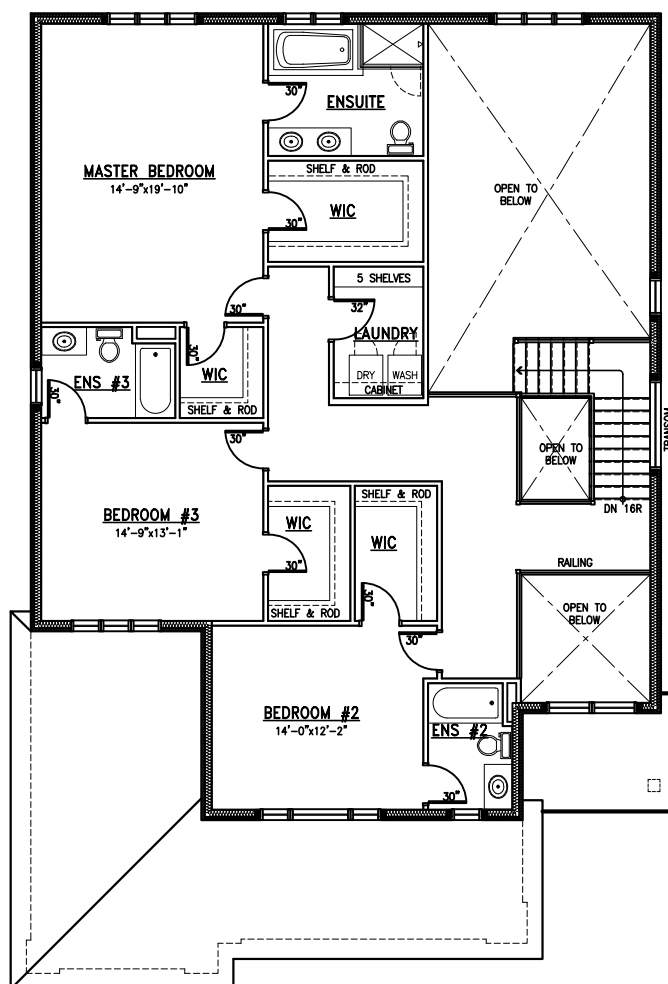
MetricHomes.com



613-296-7000



Incl. 405 SQ FT open to below



613-296-7000





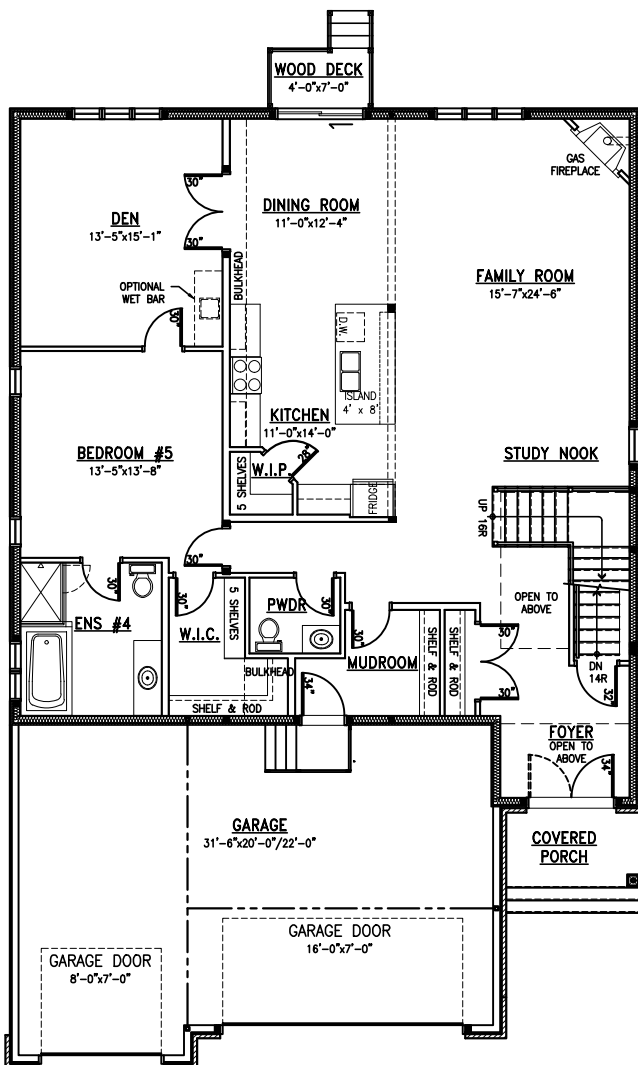
## The Jayce III

Minimum lot width: 50 FT

House Depth: 64 FT

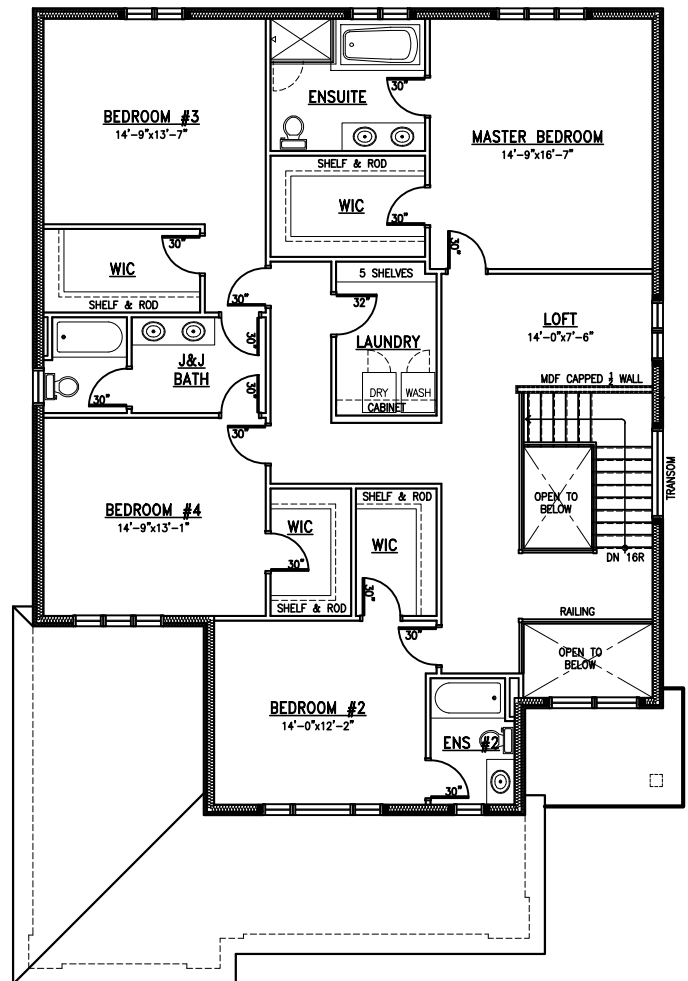
3,800 SQ FT

Incl. 75 SQ FT open to below



Main Floor  
1,770 SQ FT

All measurements are approximate.  
Actual usable floor space may vary from stated floor area.



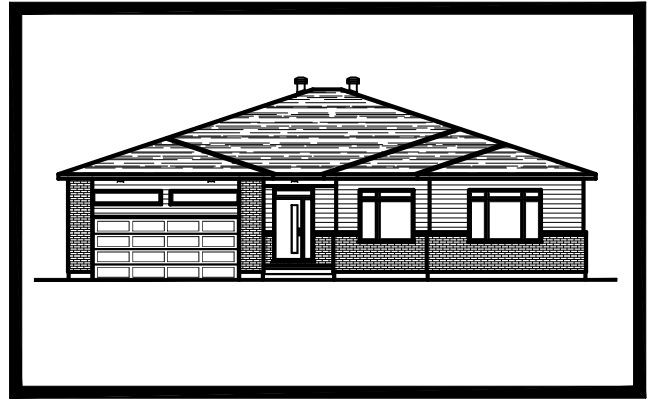
Second Floor  
2,030 SQ FT

Plans and specifications are subject to change without notice. E.&O.E.  
April 24, 2023

MetricHomes.com



613-296-7000



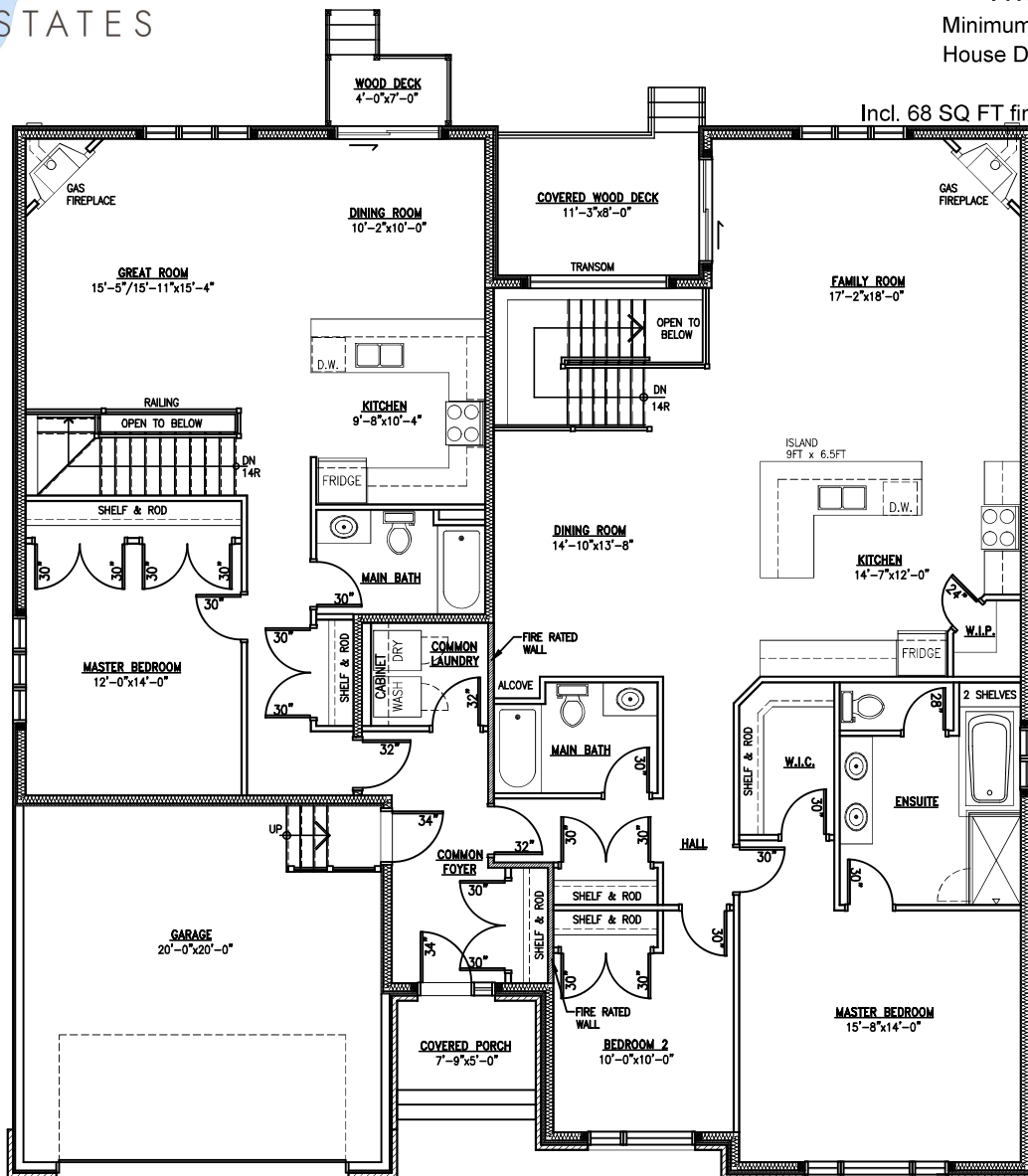
## The Thetford I

Minimum lot width: 65 FT

House Depth: apx. 59 FT

2,775 SQ FT

Incl. 68 SQ FT finished basement



Main Floor

First Unit: 1,030 SQ FT  
Second Unit: 1,795 SQ FT

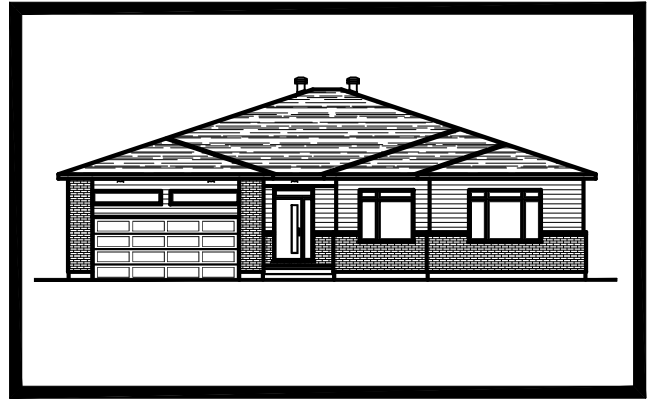
All measurements are approximate.  
Actual usable floor space may vary from stated floor area.

Plans and specifications are subject to change without notice. E.&O.E.  
July 25, 2024

MetricHomes.com



613-296-7000



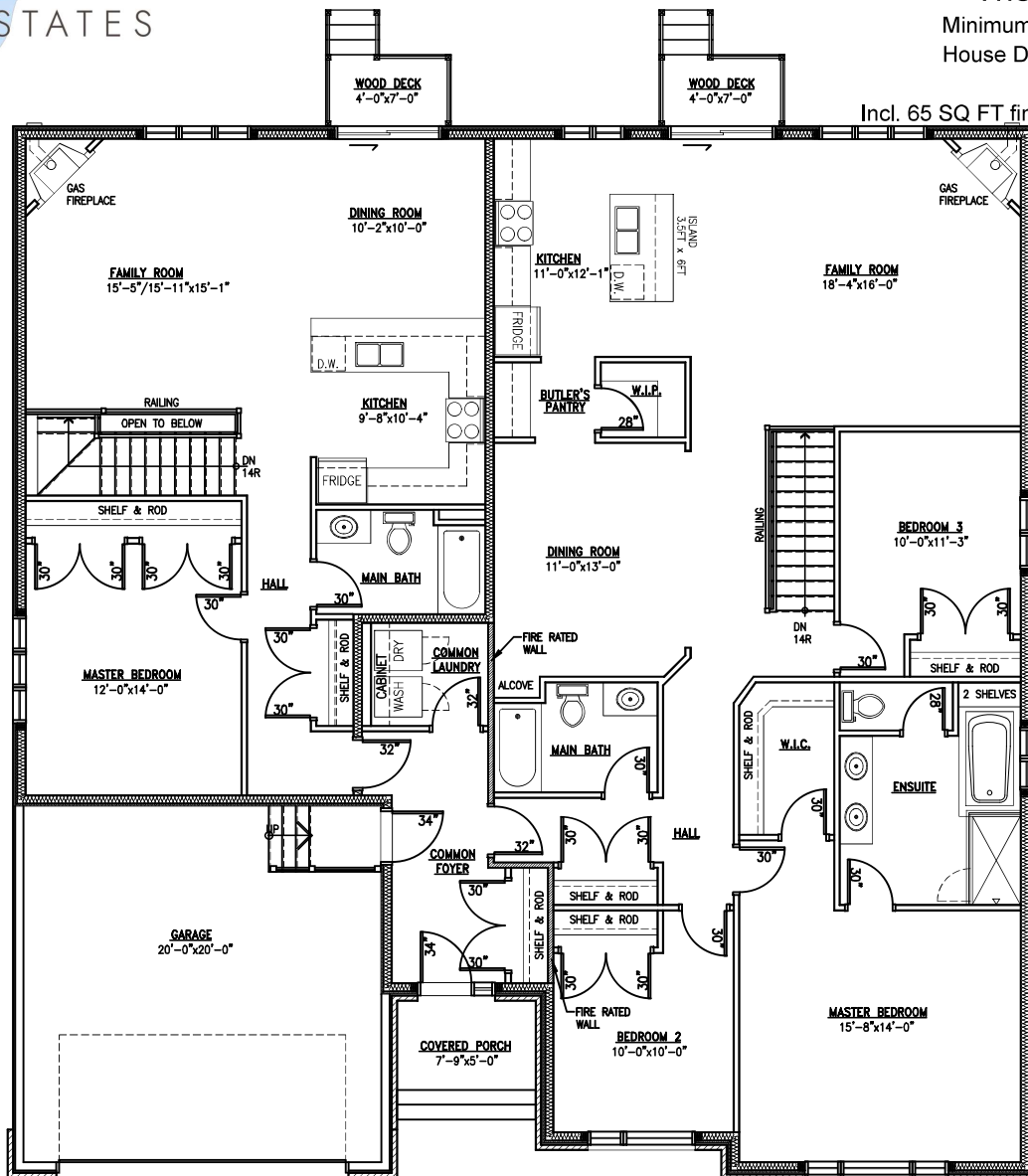
## The Thetford II

Minimum lot width: 65 FT

House Depth: apx. 59 FT

2,865 SQ FT

Incl. 65 SQ FT finished basement



Main Floor

First Unit: 980 SQ FT  
Second Unit: 1,890 SQ FT

All measurements are approximate.  
Actual usable floor space may vary from stated floor area.

Plans and specifications are subject to change without notice, E.&O.E.  
July 25, 2024

MetricHomes.com



613-296-7000



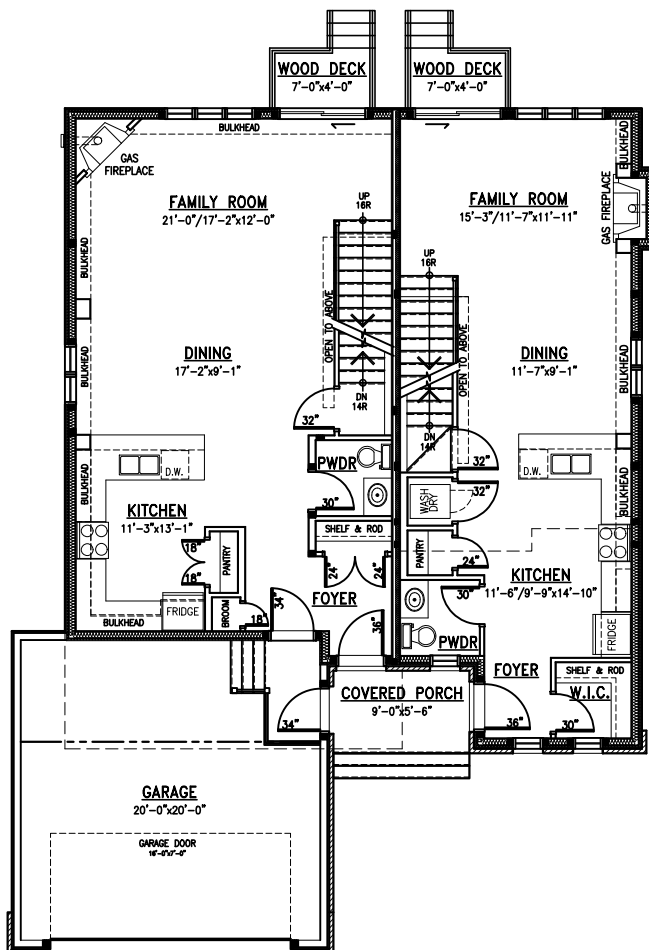
## The Richmond

Minimum lot width: 50 FT

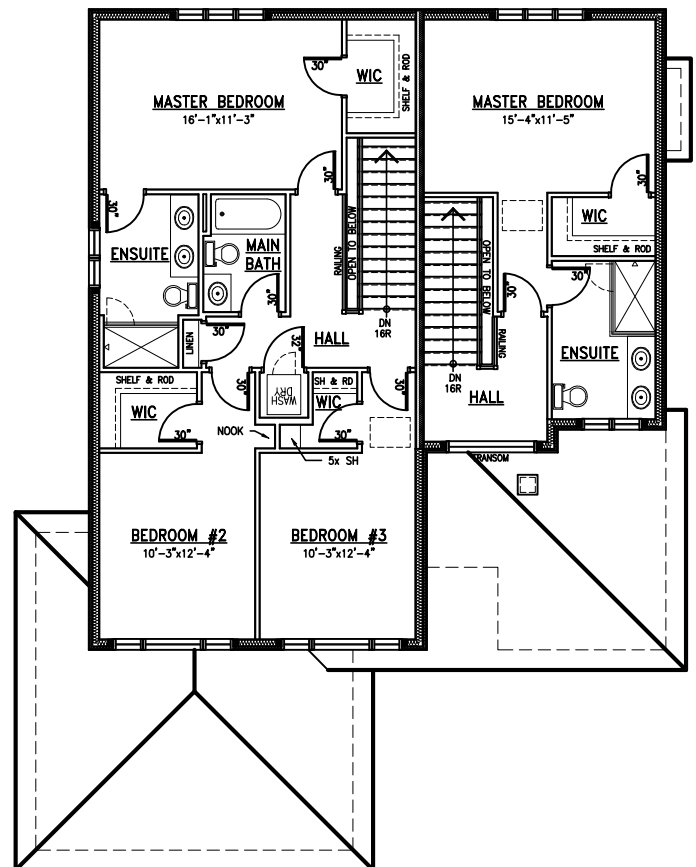
House Depth: apx. 57 FT

2,865 SQ FT

Incl. 15 SQ FT Open To Below



Main Floor



Second Floor

All measurements are approximate.  
Actual usable floor space may vary from stated floor area.

Plans and specifications are subject to change without notice. E.&O.E.  
June 19, 2023

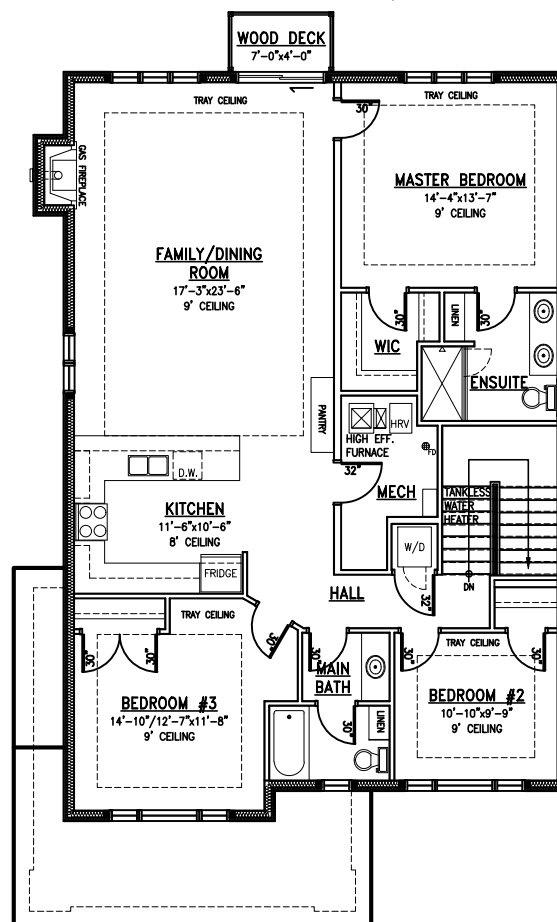
MetricHomes.com



613-296-7000



Incl. 20 SQ FT finished basement

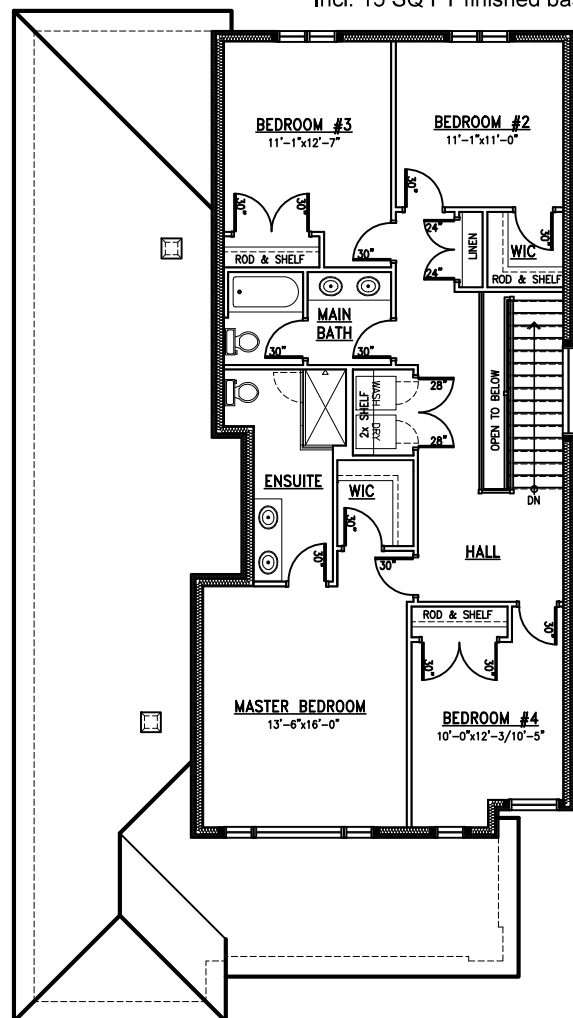


## Second Floor

613-296-7000



Incl. 15 SQ FT finished basement



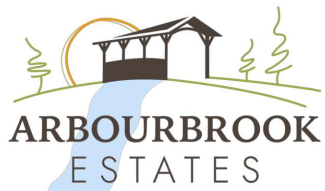
## Second Floor

**Bungalow: 805 SQ FT**

Plans and specifications are subject to change without notice. E.&O.E.  
March 15, 2024



RICHMOND VILLAGE



## The Windsor I

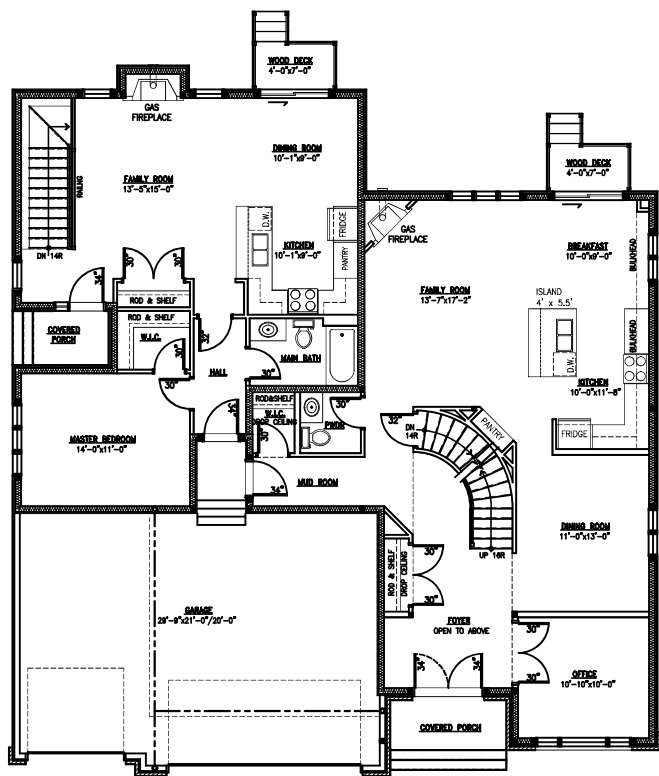
Minimum lot width: 62 FT

House Depth: apx. 57 FT

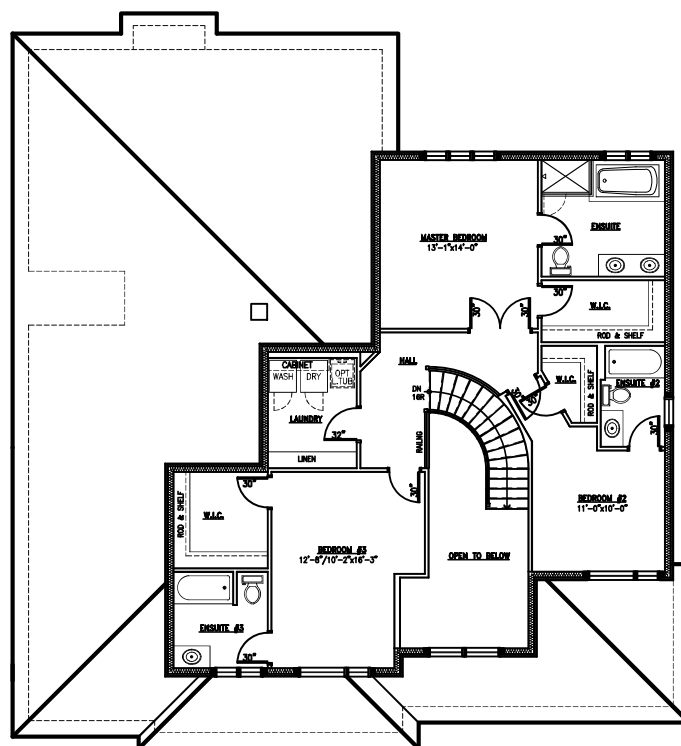
3,415 SQ FT

Incl. 145 SQ FT open to below

Incl. 20 SQ FT finished basement



DRIVEWAY TO BE EXPANDED FOR FOX RUN AND TRAIL VIEW



Two-Storey: 2,540 SQ FT

Bungalow: 875 SQ FT (incl. 20 SQFT Basement Landing)

Main Floor

Second Floor

All measurements are approximate.  
Actual usable floor space may vary from stated floor area.

Plans and specifications are subject to change without notice. E.&O.E.  
Dec 1, 2023

MetricHomes.com



613-296-7000





RICHMOND VILLAGE



## The London I

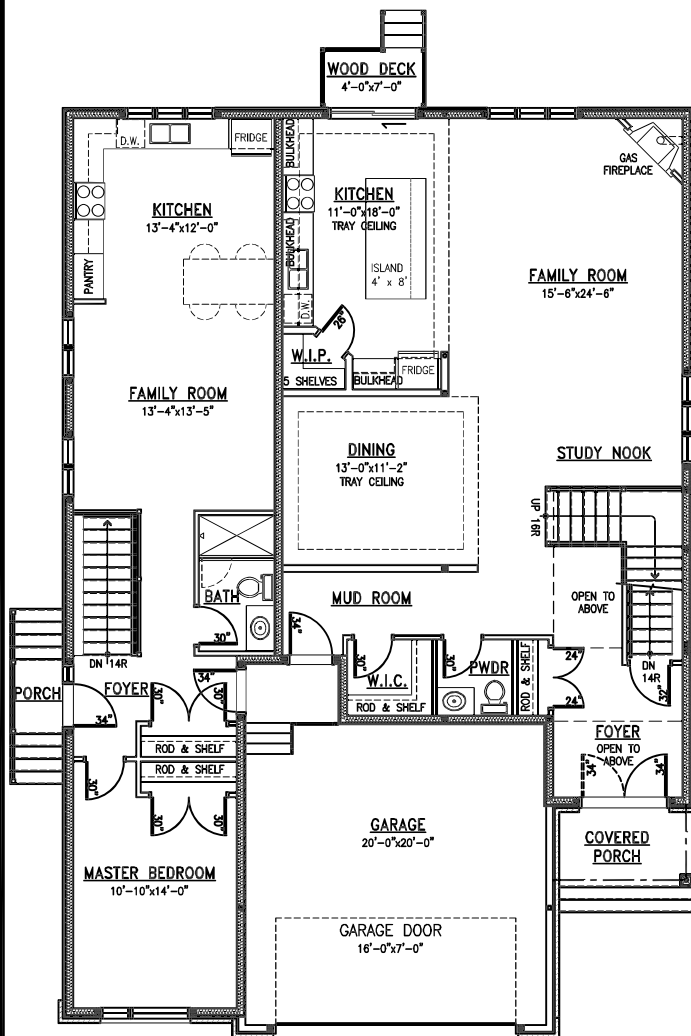
Minimum lot width: 50 FT

House Depth: 62 FT

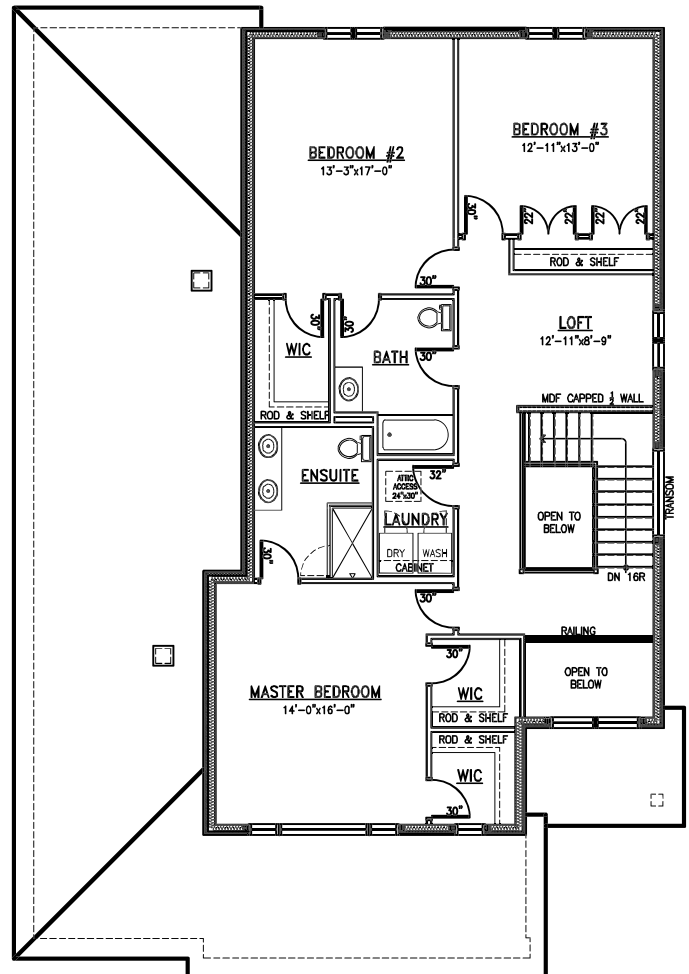
3,475 SQ FT

Incl. 75 SQ FT open to below

Incl. 15 SQ FT finished basement



## Main Floor



## Second Floor

Two-Storey: 2,645 SQ FT

Bungalow: 830 SQ FT

All measurements are approximate.  
Actual usable floor space may vary from stated floor area.

Plans and specifications are subject to change without notice. E.&O.E.  
June 23, 2023

MetricHomes.com



613-296-7000

TRAIL VIEW

FoxRun

RICHMOND VILLAGE



## The London II

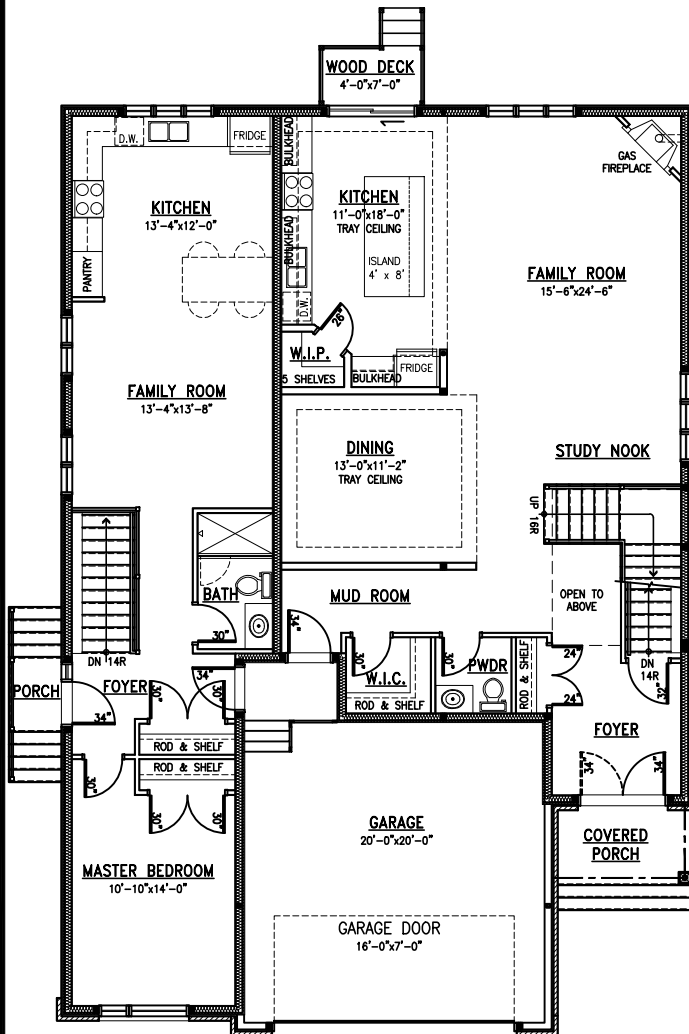
Minimum lot width: 50 FT

House Depth: 62 FT

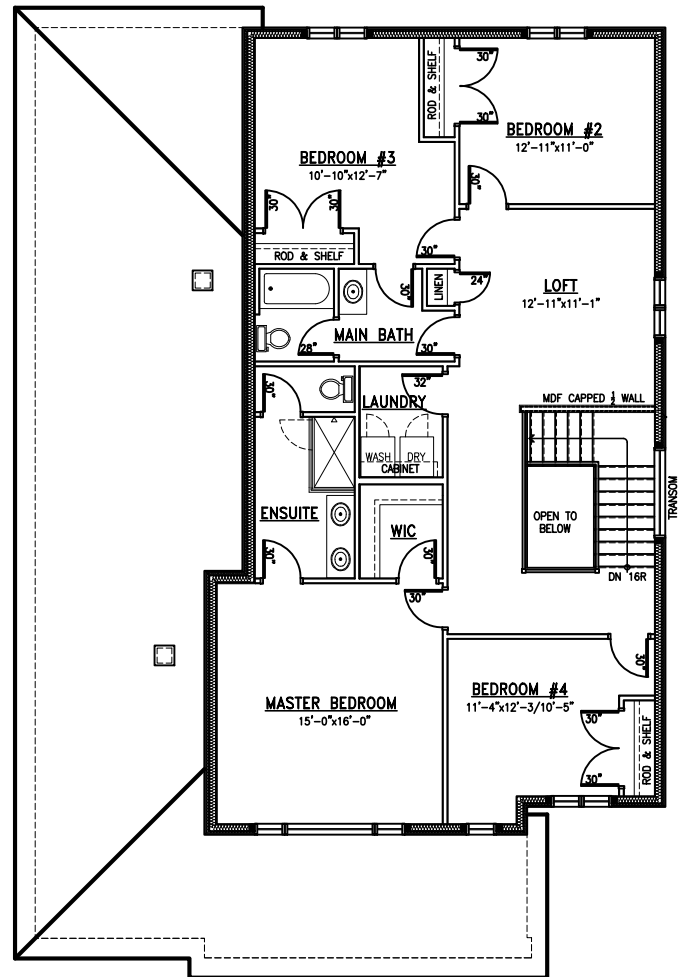
3,520 SQ FT

Incl. 30 SQ FT open to below

Incl. 15 SQ FT finished basement



Main Floor



Second Floor

Two-Storey: 2,690 SQ FT  
Bungalow: 830 SQ FT

All measurements are approximate.  
Actual usable floor space may vary from stated floor area.

Plans and specifications are subject to change without notice. E.&O.E.  
June 23, 2023

MetricHomes.com



613-296-7000

TRAILVIEW



RICHMOND VILLAGE



## The Windsor II

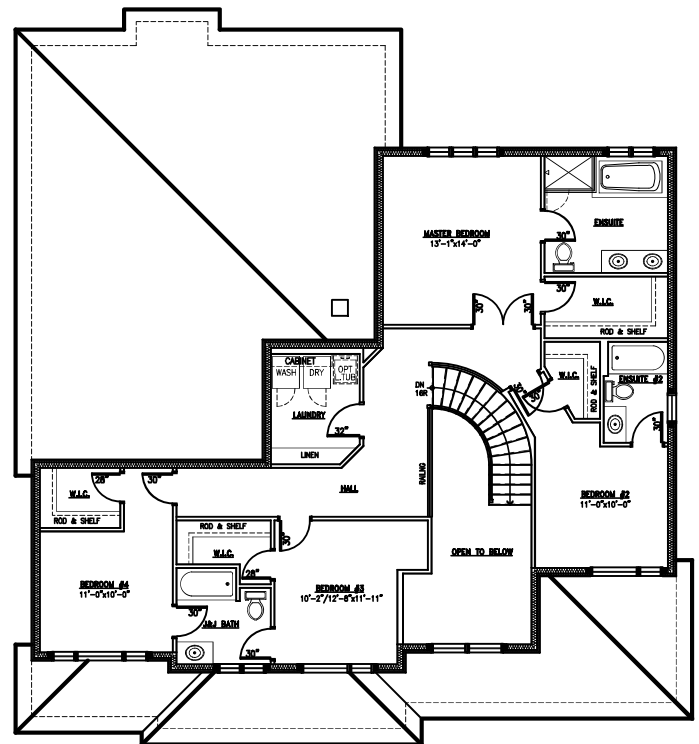
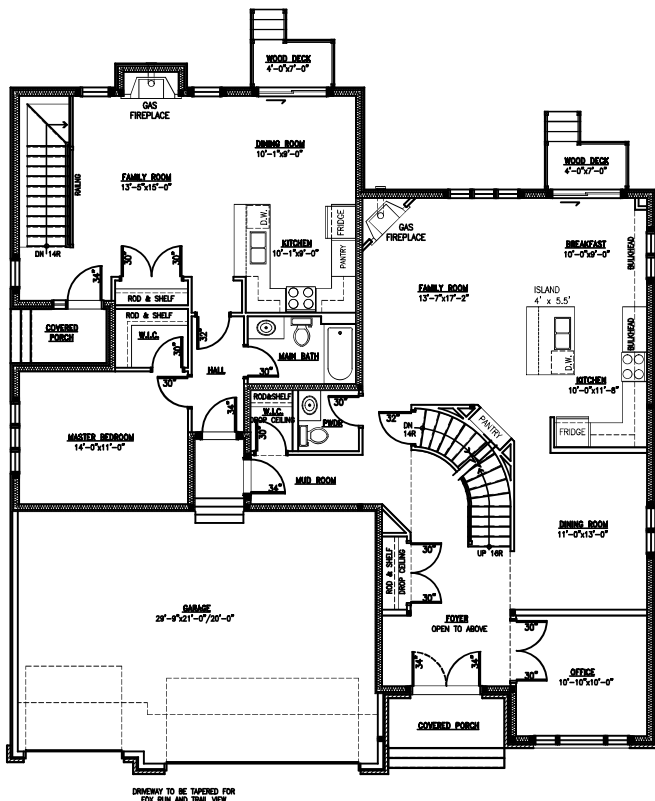
Minimum lot width: 62 FT

House Depth: apx. 57 FT

3,605 SQ FT

Incl. 145 SQ FT open to below

Incl. 20 SQ FT finished basement



Two-Storey: 2,730 SQ FT

**Bungalow: 875 SQ FT (incl. 20 SQFT Basement Landing)**

MainFloor

## Second Floor

All measurements are approximate.  
Actual usable floor space may vary from stated floor area.

Plans and specifications are subject to change without notice. E.&O.E.  
Nov 20, 2023

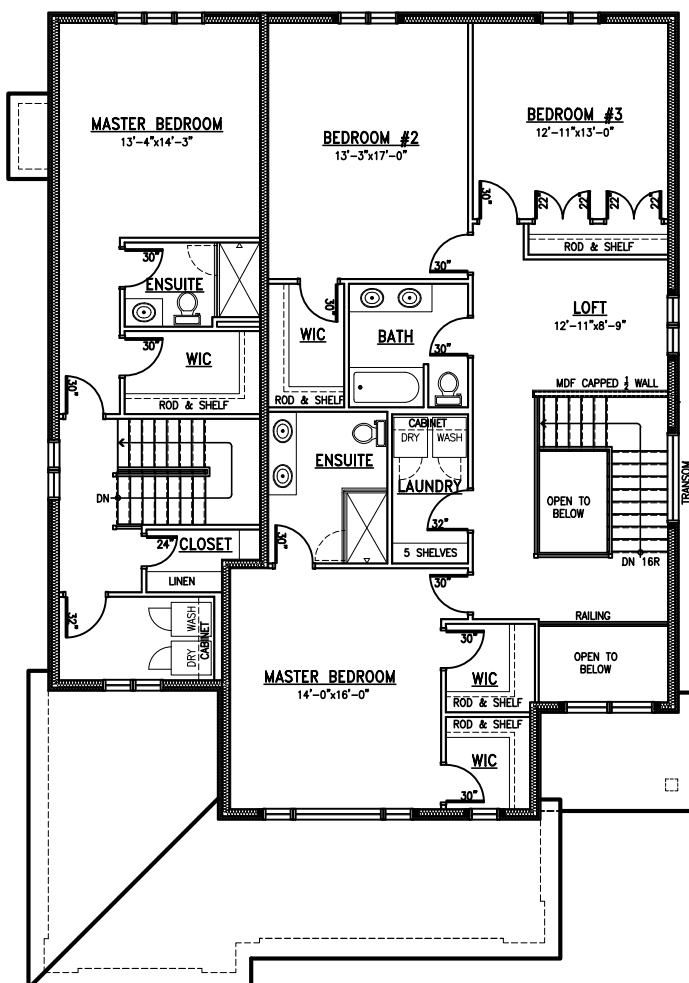
MetricHomes.com



613-296-7000

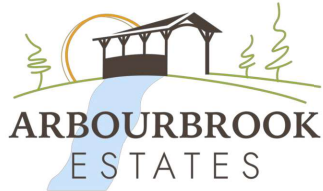


Incl. 30 SQ FT fin basement



## Second Floor

613-296-7000



## The Kanata

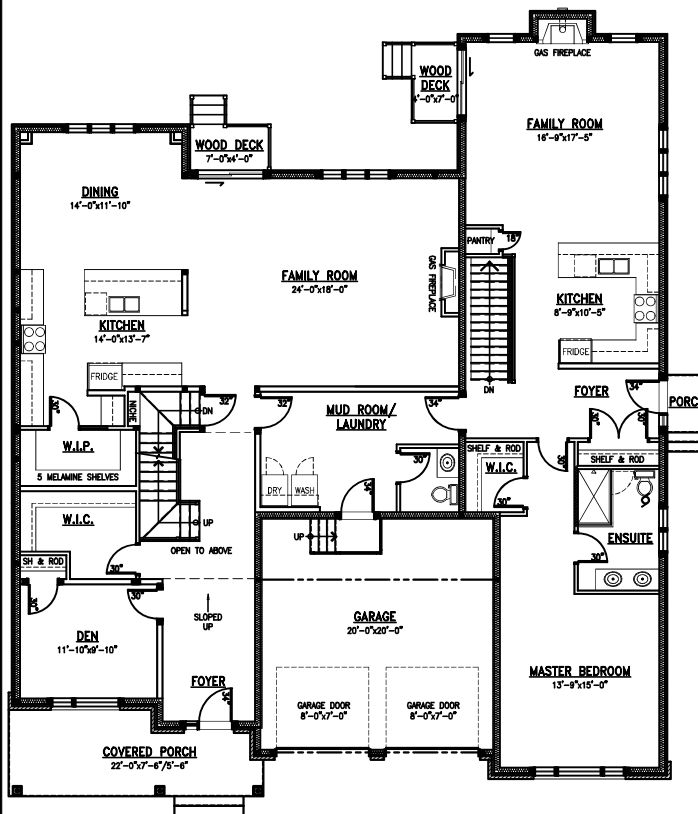
Minimum lot size 65 FT

House Depth: apx. 65 FT

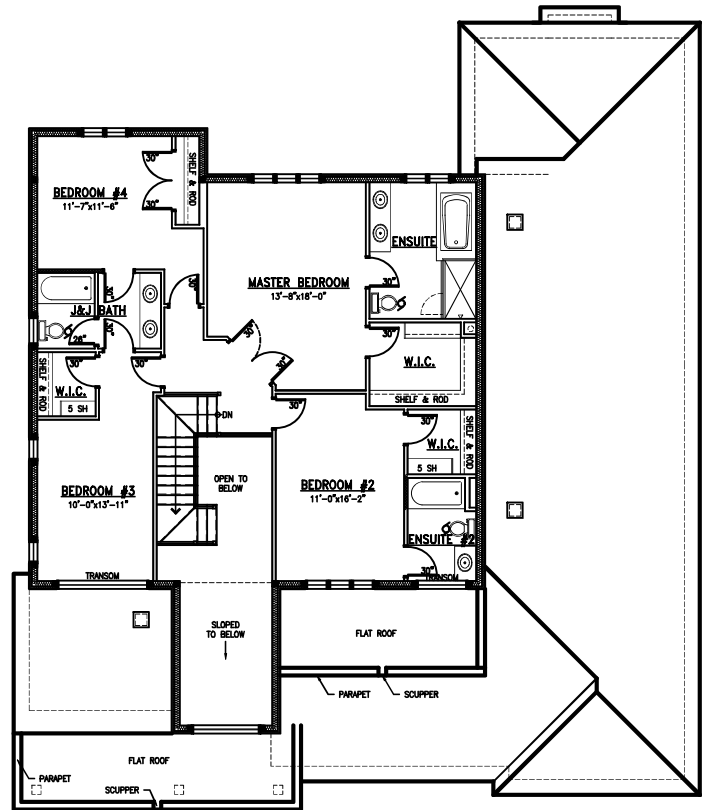
4,300 SQ FT

Incl. 185 SQ FT open to below

Incl. 20 SQ FT finished basement



Main Floor



Second Floor

Two-Storey: 3,195 SQ FT  
Bungalow: 1,105 SQ FT

All measurements are approximate.  
Actual usable floor space may vary from stated floor area.

Plans and specifications are subject to change without notice. E.&O.E.  
January 31, 2024

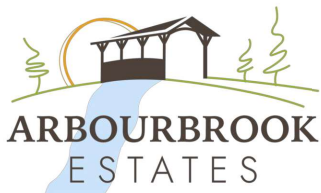
MetricHomes.com



613-296-7000



TRAIL VIEW



ARBOURBROOK  
ESTATES



RICHMOND VILLAGE



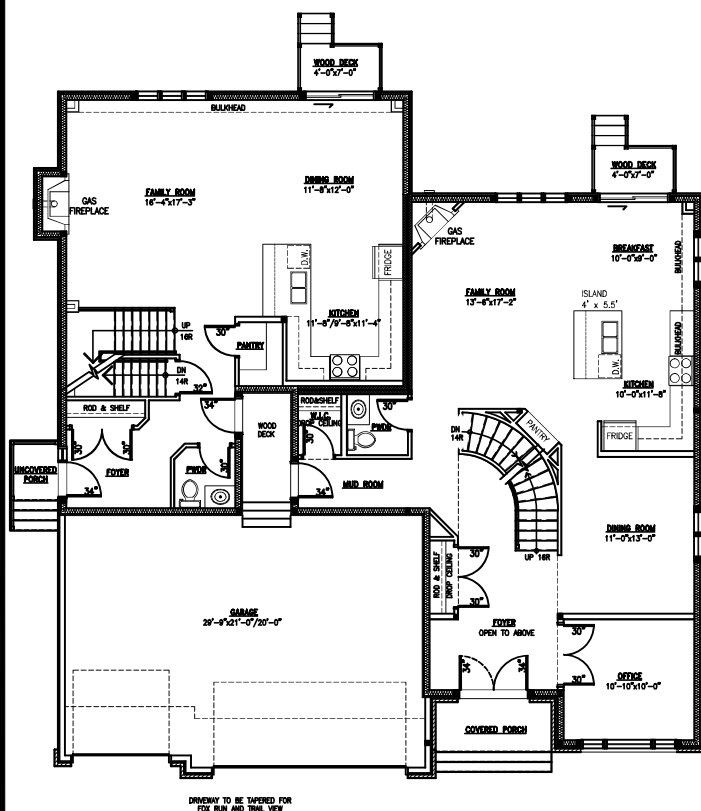
## The Windsor III

Minimum lot width: 62 FT

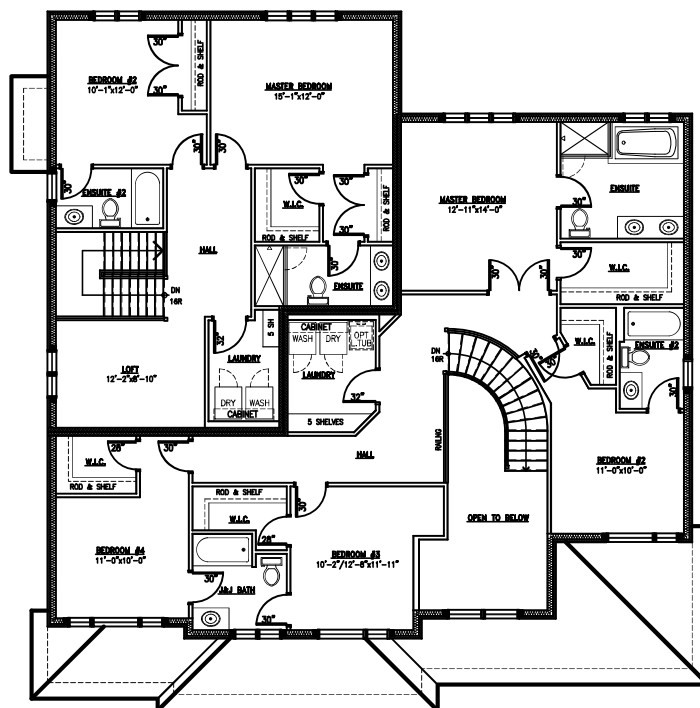
House Depth: apx. 57 FT

4,500 SQ FT

Incl. 145 SQ FT open to below



Main Floor



Second Floor

Main Two-Storey: 2,705 SQ FT  
Secondary Two-Storey: 1,795 SQ FT

All measurements are approximate.  
Actual usable floor space may vary from stated floor area.

Plans and specifications are subject to change without notice. E.&O.E.  
Nov 20, 2023

MetricHomes.com



613-296-7000





RICHMOND VILLAGE



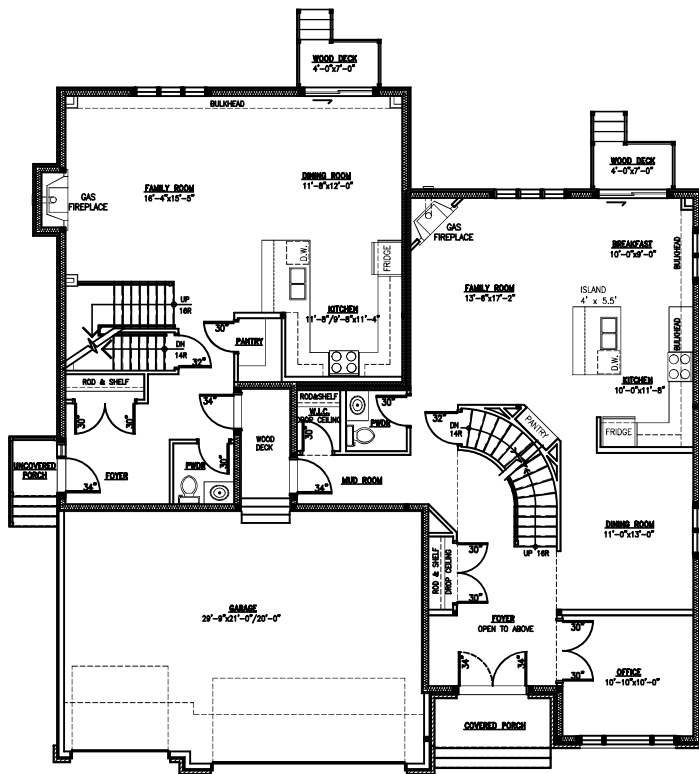
## The Windsor IV

Minimum lot width: 62 FT

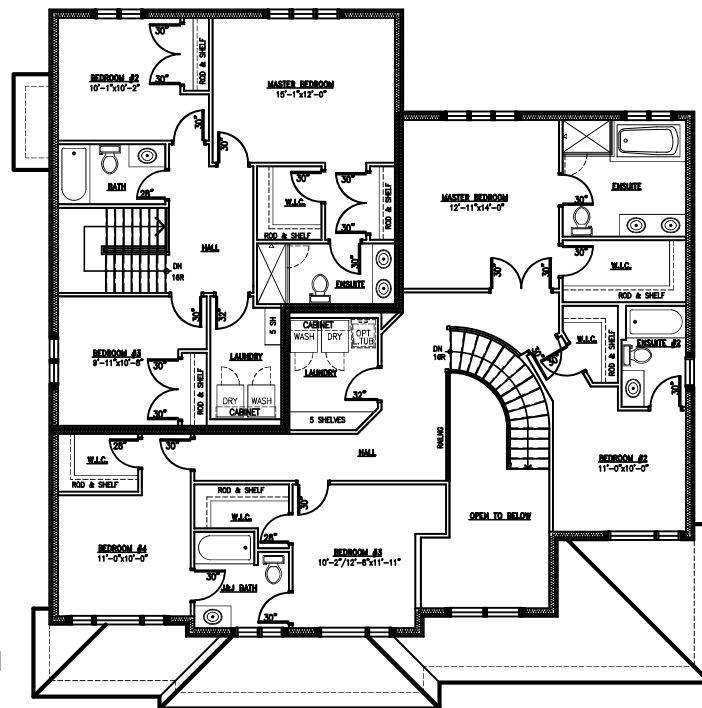
House Depth: apx. 57 FT

4,500 SQ FT

Incl. 145 SQ FT open to below



DRIVENWAY TO BE TAPERED FOR  
FOX RUN AND TRAIL VIEW



## MainFloor

Main Two-Storey: 2,705 SQ FT  
Secondary Two-Storey: 1,795 SQ FT

## Second Floor

All measurements are approximate.  
Actual usable floor space may vary from stated floor area.

Plans and specifications are subject to change without notice. E.&O.E.  
Nov 20, 2023

MetricHomes.com



613-296-7000



TRAILVIEW



RICHMOND VILLAGE



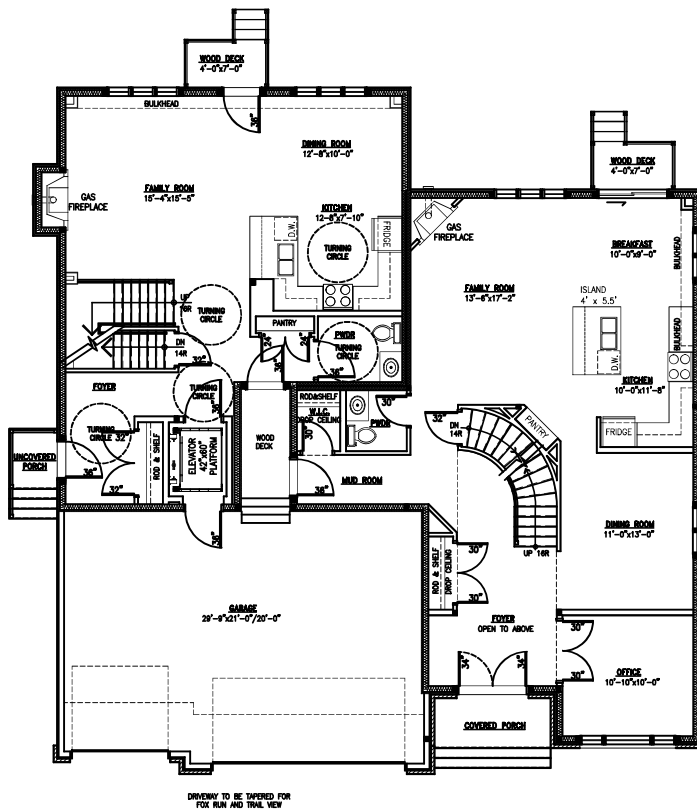
## The Windsor IV-E

Minimum lot width: 62 FT

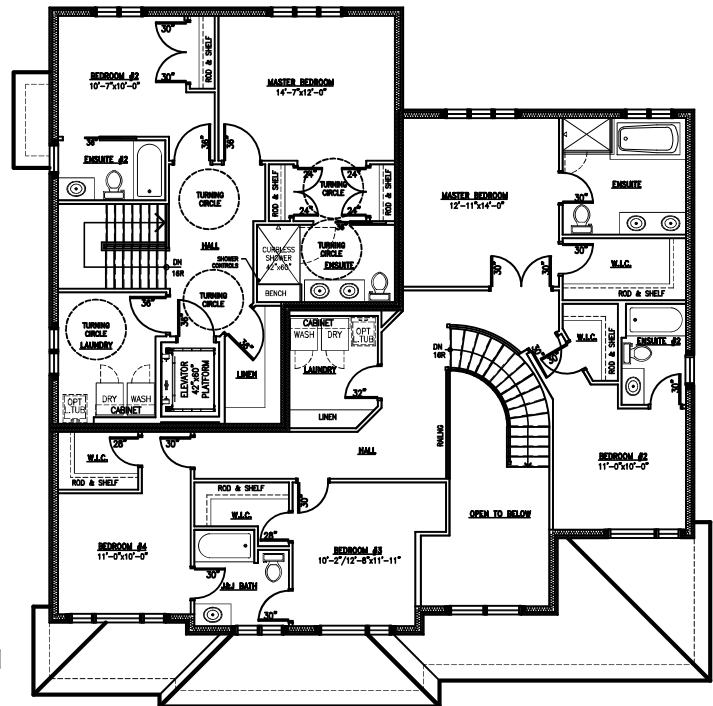
House Depth: apx. 57 FT

4,500 SQ FT

Incl. 145 SQ FT open to below



DRIVEWAY TO BE TAPERED FOR  
FOX RUN AND TRAIL VIEW



MainFloor

Main Two-Storey: 2,705 SQ FT  
Secondary Two-Storey: 1,795 SQ FT

## Second Floor

All measurements are approximate.  
Actual usable floor space may vary from stated floor area.

Plans and specifications are subject to change without notice. E.&O.E.  
Nov 20, 2023

MetricHomes.com



613-296-7000