



Income & Multi-Generational Homes



The Richmond



The Kanata



The London III



The Windsor



TRAIL VIEW

FoxRun

R. GROUND VILLAGE



The Oliver I w/ Additional Dwelling Unit

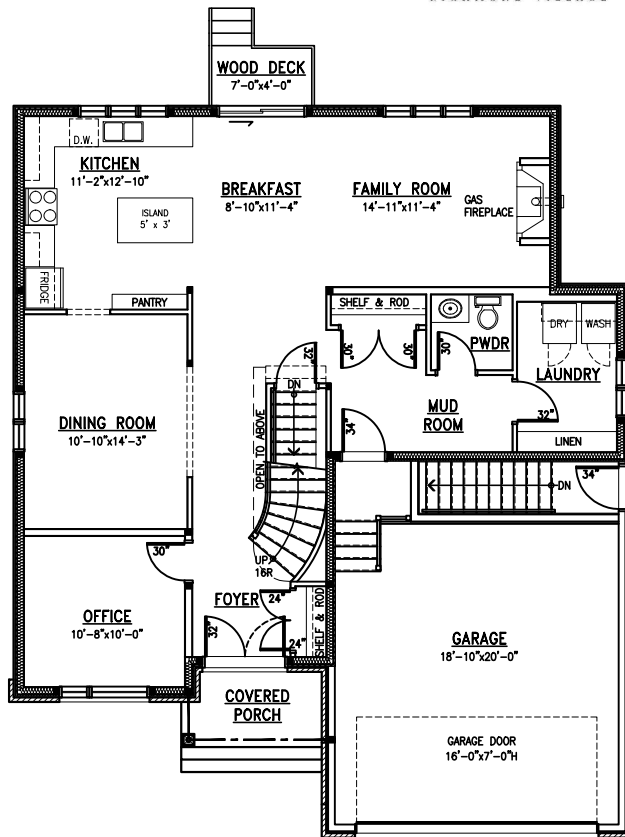
Minimum lot width: 49 FT

House Depth: apx. 49 FT

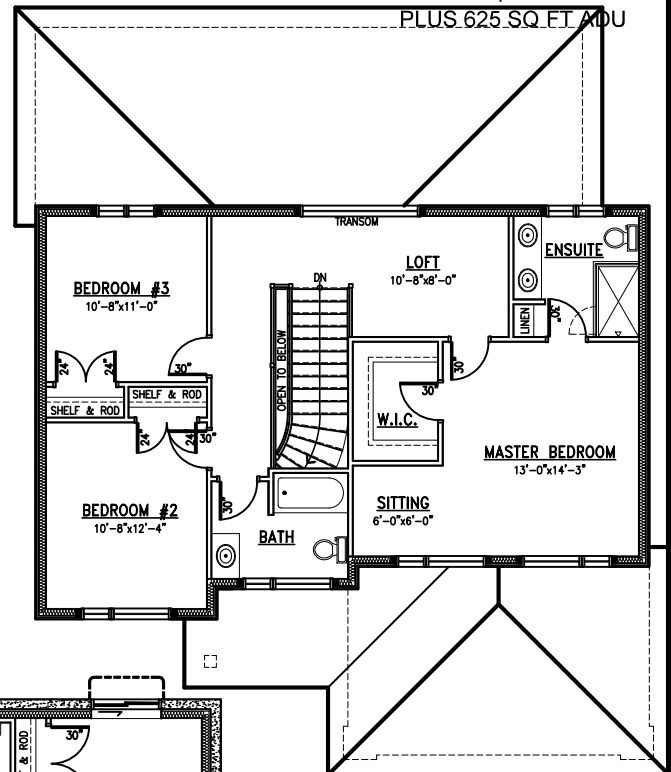
2,255 SQ FT

Incl. 8 SQ FT open to below

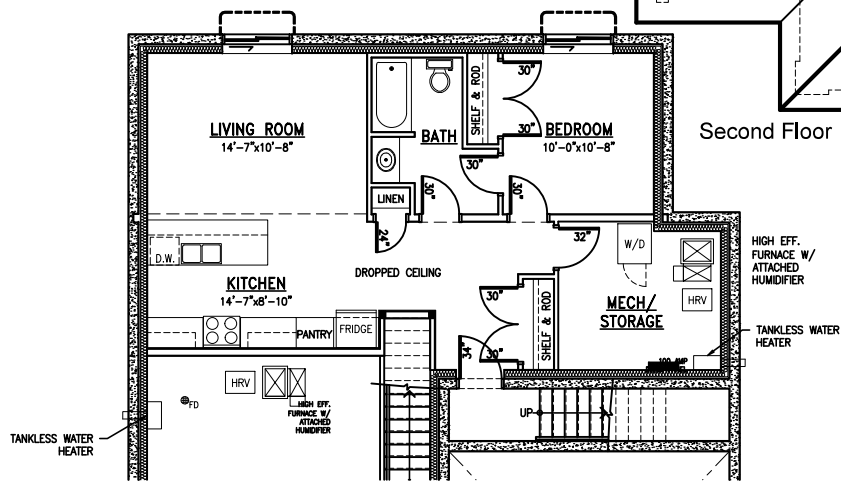
PLUS 625 SQ FT ADU



Main Floor



Second Floor



Basement Additional Dwelling Unit (Can be added to ANY Oliver plan!)

All measurements are approximate.
Actual usable floor space may vary from stated floor area.

Plans and specifications are subject to change without notice, E.&O.E.
Brochure Plan - September 4, 2024

MetricHomes.com

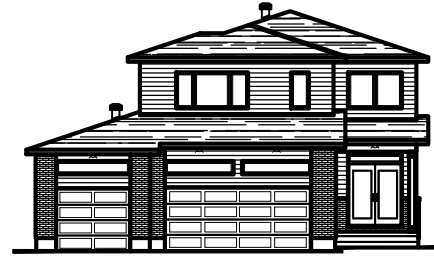


613-296-7000

TRAIL VIEW

FoxRun

RICHMOND VILLAGE



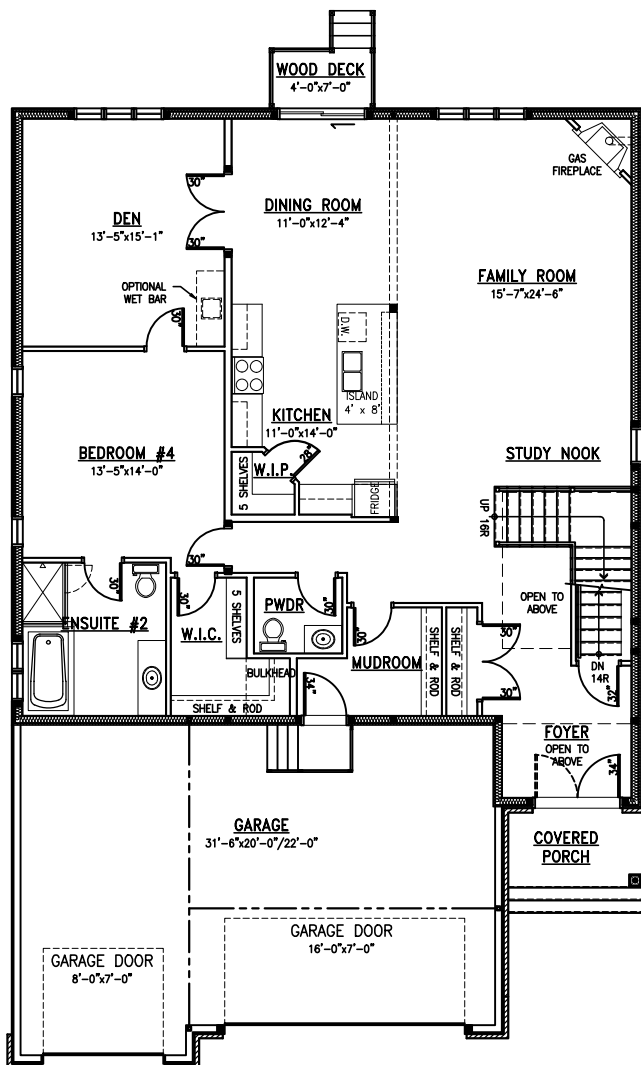
The Jayce I

Minimum lot width: 50 FT

House Depth: 64 FT

3,235 SQ FT

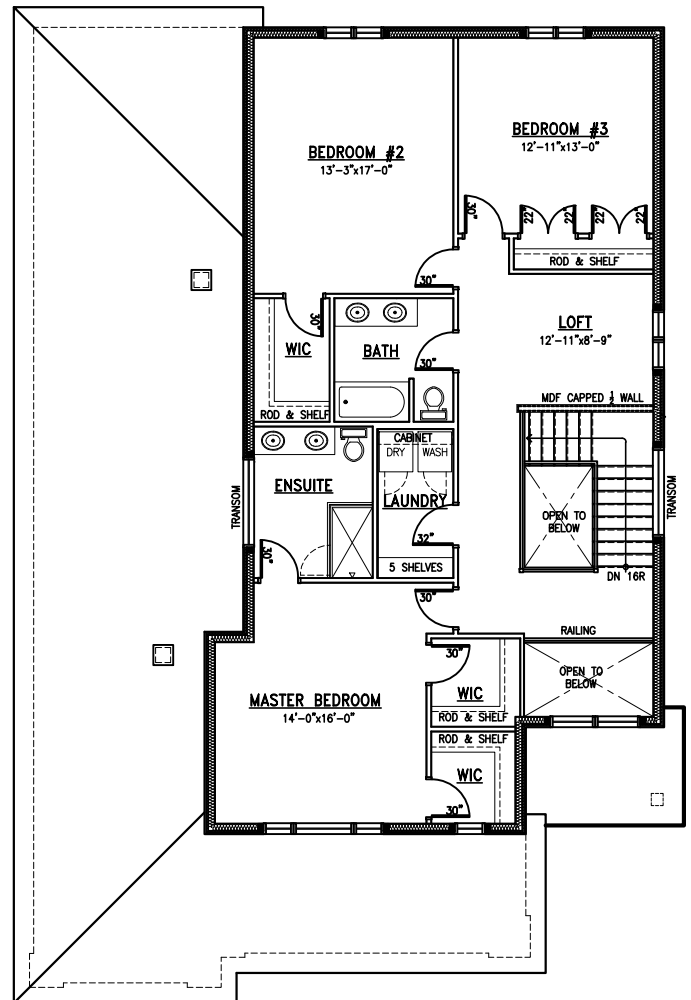
Incl. 75 SQ FT open to below



Main Floor

1,770 SQ FT

All measurements are approximate.
Actual usable floor space may vary from stated floor area.



Second Floor

1,465 SQ FT

Plans and specifications are subject to change without notice, E.&O.E.
March 27, 2023

MetricHomes.com



613-296-7000



RICHMOND VILLAGE



The Jayce I w/ Additional Dwelling Unit

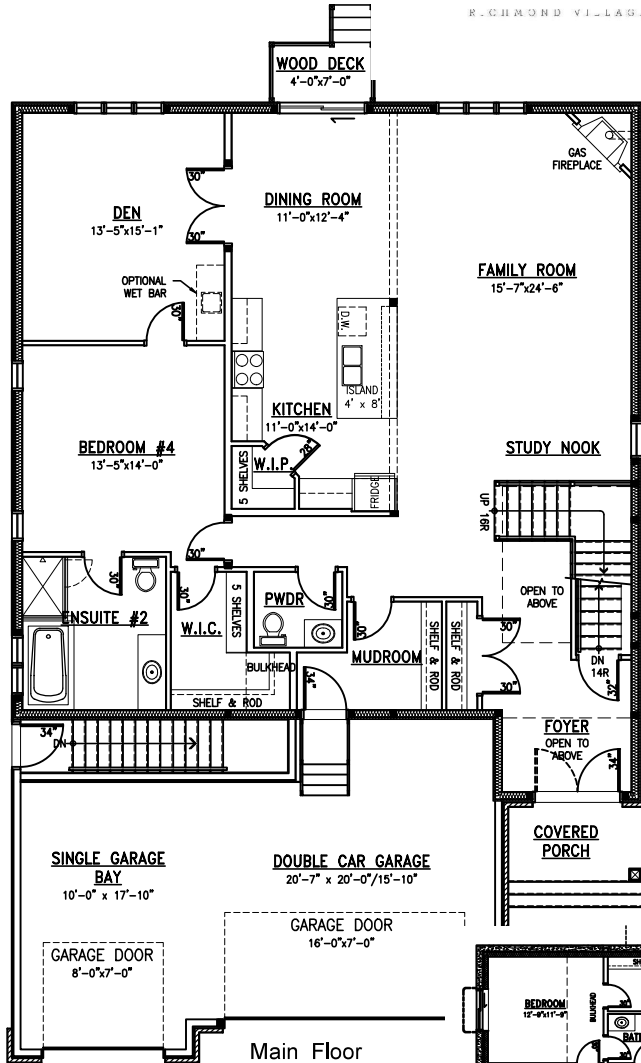
Minimum lot width: 50 FT

House Depth: 66 FT

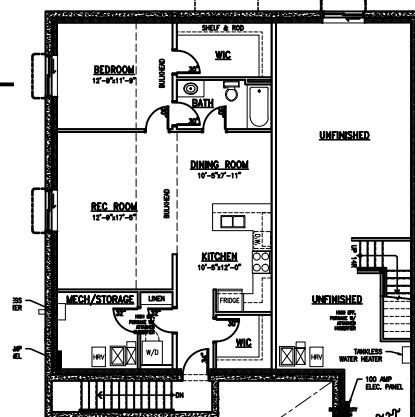
3,235 SQ FT

Incl. 75 SQ FT open to below

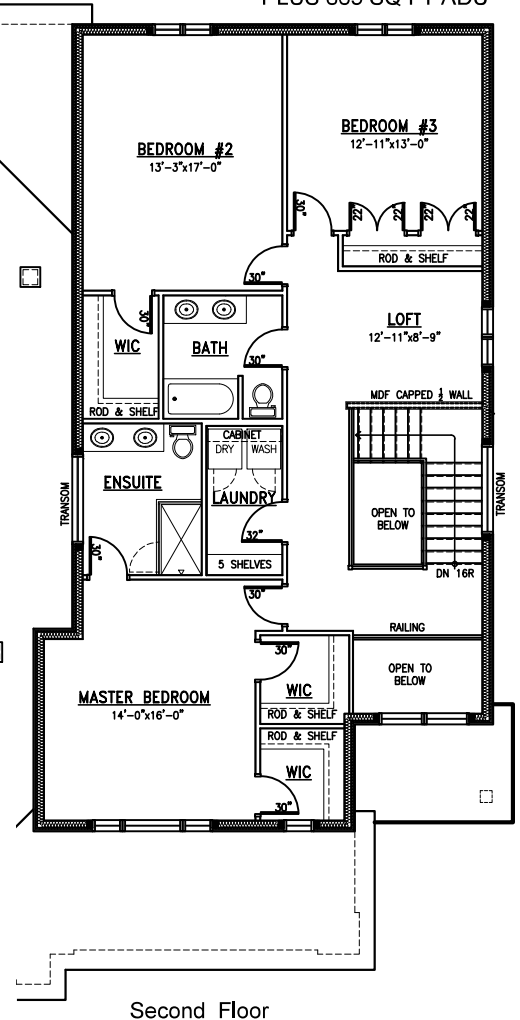
PLUS 865 SQ FT ADU



Main Floor



Basement Additional Dwelling Unit



Second Floor

All measurements are approximate.
Actual usable floor space may vary from stated floor area.

Plans and specifications are subject to change without notice, E.&O.E.
Brochure Plan - September 3, 2024

MetricHomes.com



613-296-7000



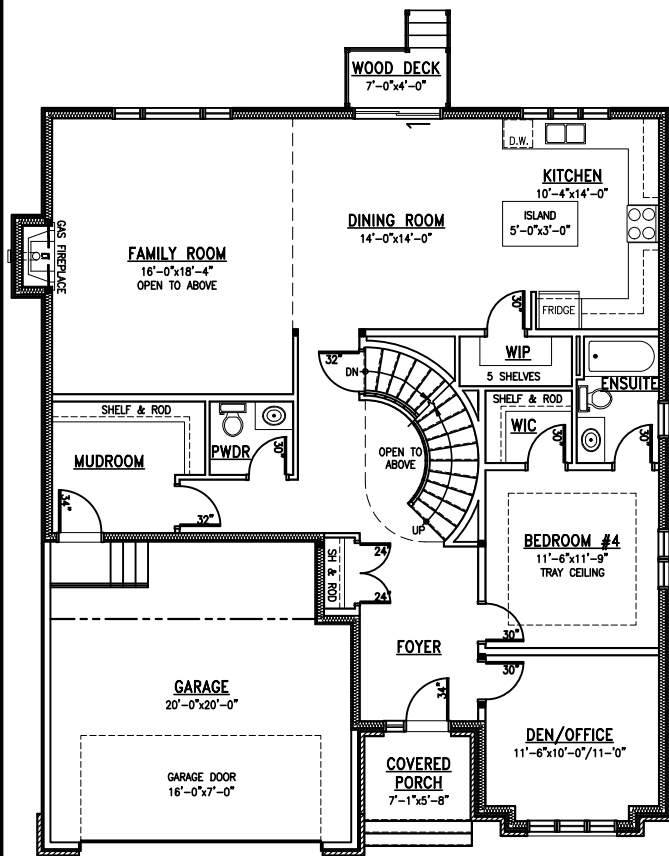
The William IV

Minimum lot width: 50 FT

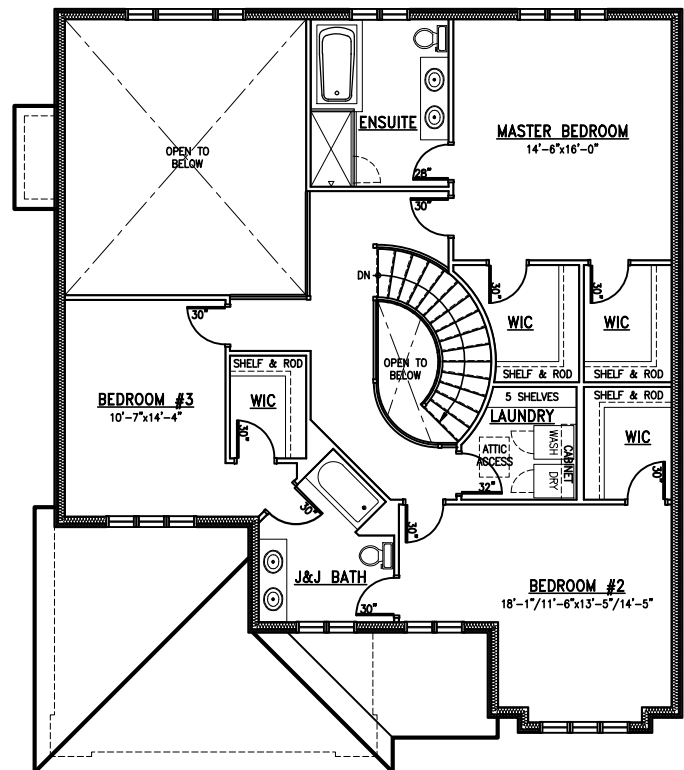
House Depth: apx. 50 FT

3,280 SQ FT

Incl. 325 SQ FT open to below



Main Floor



Second Floor

All measurements are approximate.
Actual usable floor space may vary from stated floor area.

Plans and specifications are subject to change without notice, E.&O.E.
May 2, 2023

MetricHomes.com



613-296-7000

TRAIL VIEW

FoxRun

R. GROUND VILLAGE



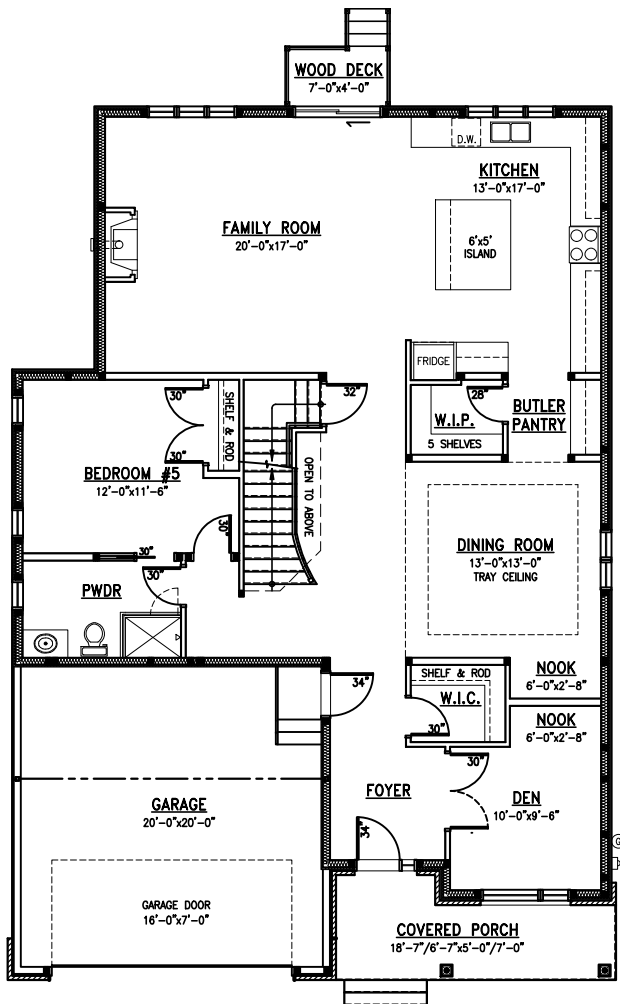
The Noah

Minimum lot width: 50 FT

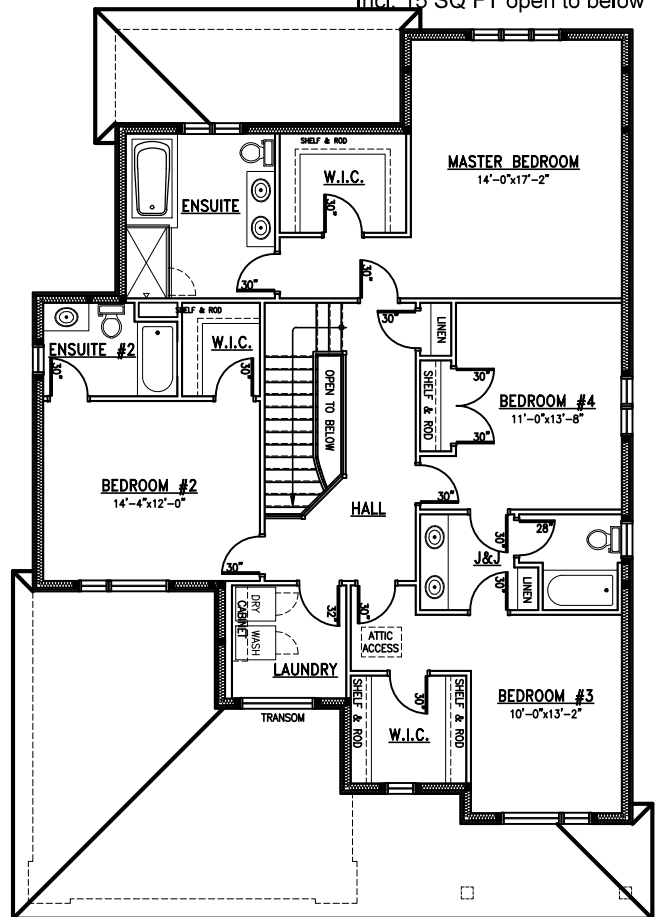
House Depth: apx. 58 FT

3,285 SQ FT

Incl. 15 SQ FT open to below



Main Floor



Second Floor

All measurements are approximate.
Actual usable floor space may vary from stated floor area.

Plans and specifications are subject to change without notice, E.&O.E.
April 5, 2023

MetricHomes.com



613-296-7000



Incl. 15 SQ FT open to below



613-296-7000



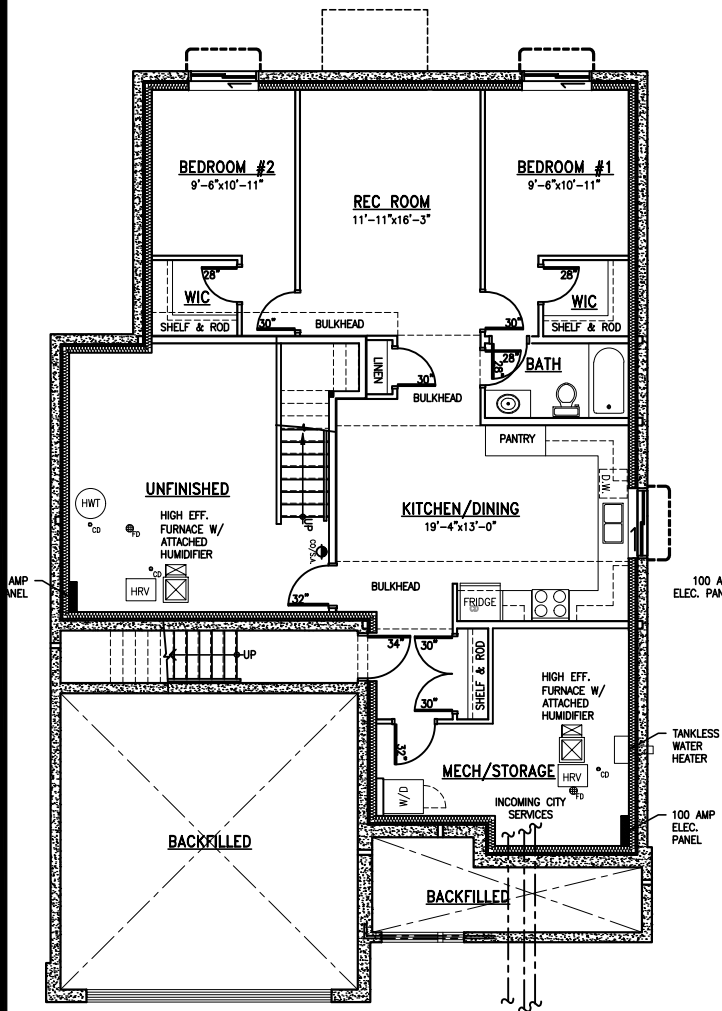
The Noah w/ Additional Dwelling Unit

Minimum lot width: 50 FT

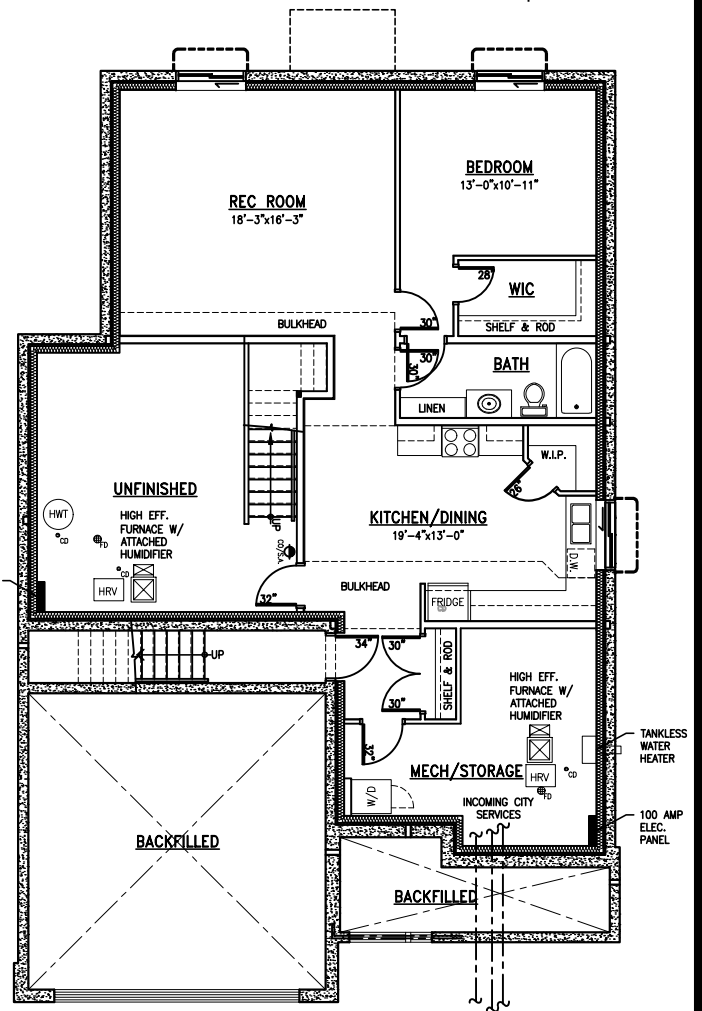
House Depth: apx. 63 FT

3,285 SQ FT

Incl. 15 SQ FT open to below



Basement Additional Dwelling Unit (Two-Bedroom)
950 SQ FT



Basement Additional Dwelling Unit (One-Bedroom)
950 SQ FT

All measurements are approximate.
Actual usable floor space may vary from stated floor area.

Plans and specifications are subject to change without notice, E.&O.E.
Brochure Plan - September 4, 2024

MetricHomes.com



613-296-7000



THE LUCAS (Modified) INVENTORY HOME WITH ADU FOR SALE

(Additional Dwelling Unit)

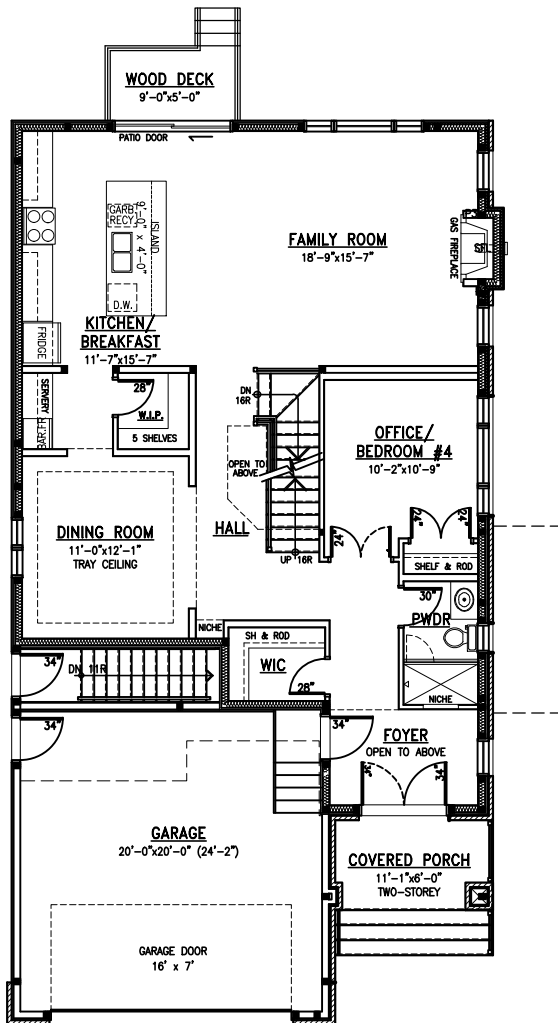


TR001

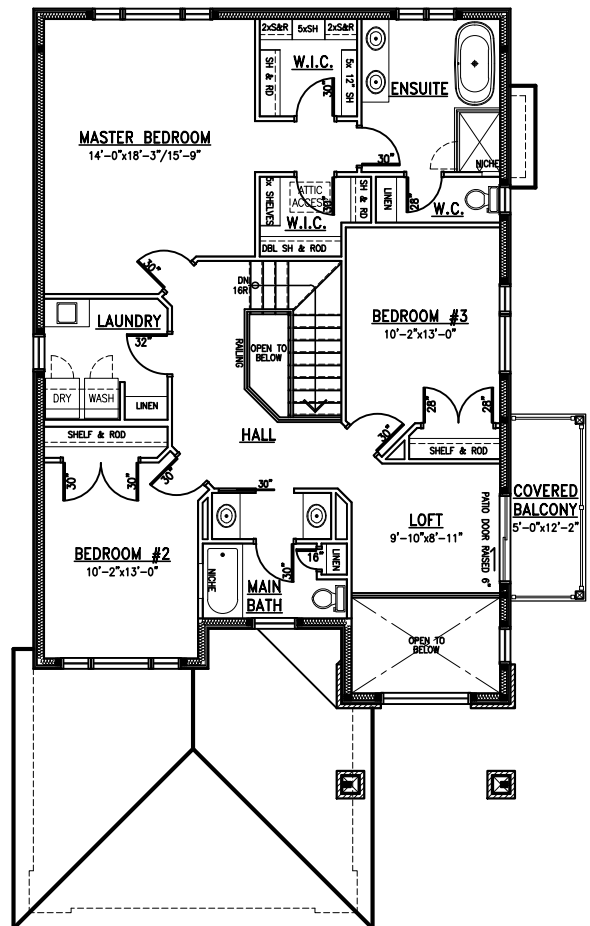
3,475 SQ FT

Incl. 80 SQ FT open to below

Incl. 810 SQ FT finished basement



Main Floor



Second Floor

Appliances not included
All measurements are approximate.
Actual usable floor space may vary from stated floor area.

Plans and specifications are subject to change without notice. E.&O.E.
February 6, 2026

www.MetricHomes.com



613-296-7000



THE LUCAS (Modified) INVENTORY HOME WITH ADU FOR SALE

(Additional Dwelling Unit)

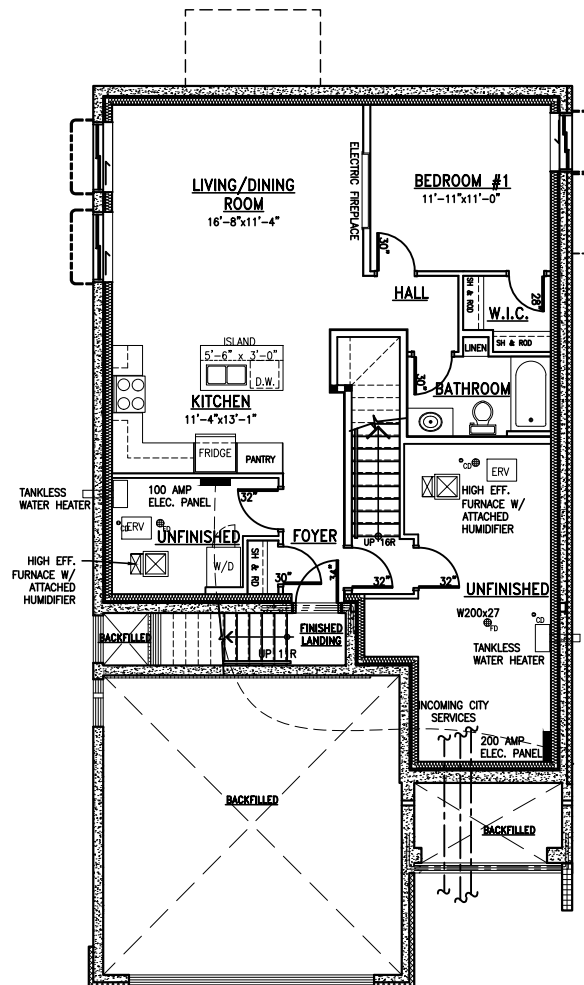


TR001

3,475 SQ FT

Incl. 80 SQ FT open to below

Incl. 810 SQ FT finished basement



Basement With ADU

Appliances not included
All measurements are approximate.
Actual usable floor space may vary from stated floor area.

Plans and specifications are subject to change without notice. E.&O.E.
February 6, 2026

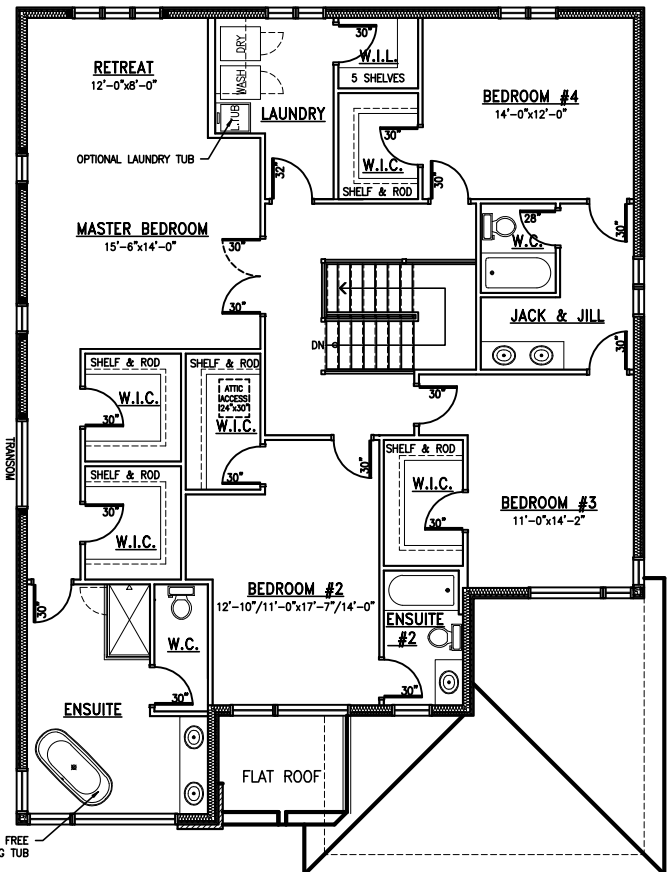
www.MetricHomes.com



613-296-7000



3,785 SQ FT



Second Floor

613-296-7000



R. GARDEN VILLAGE



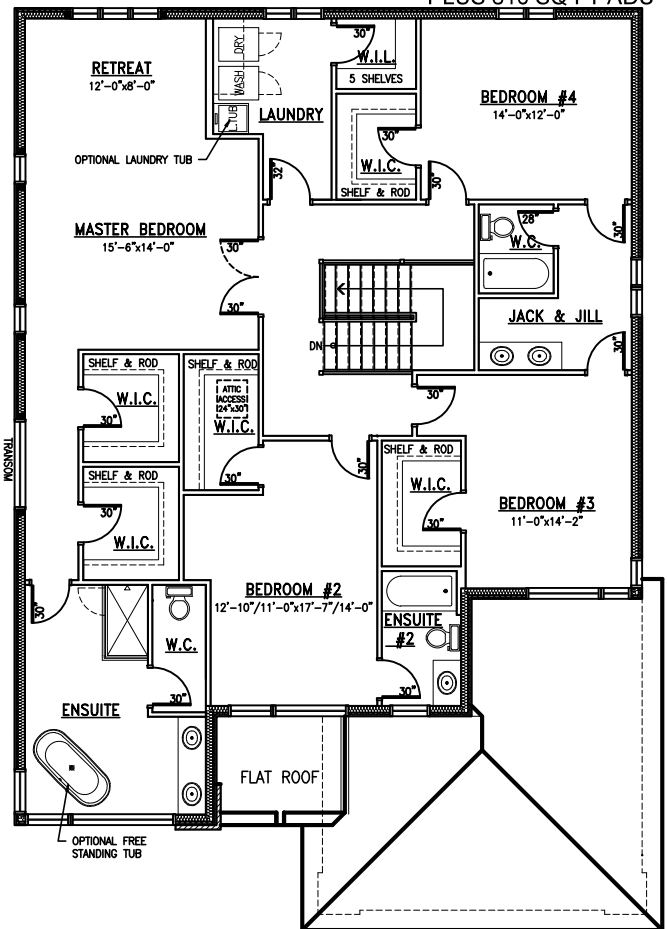
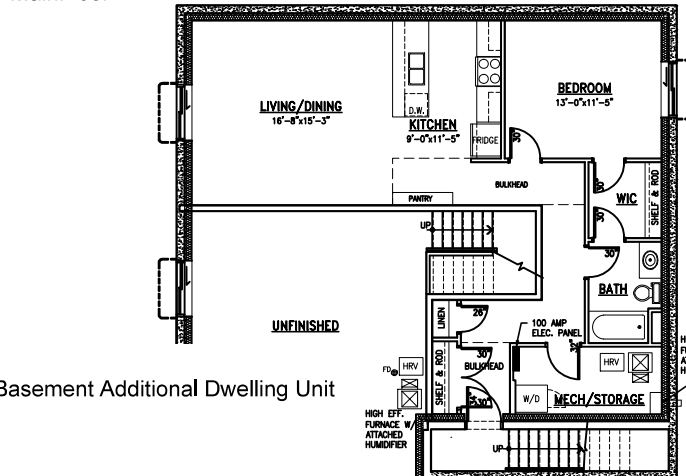
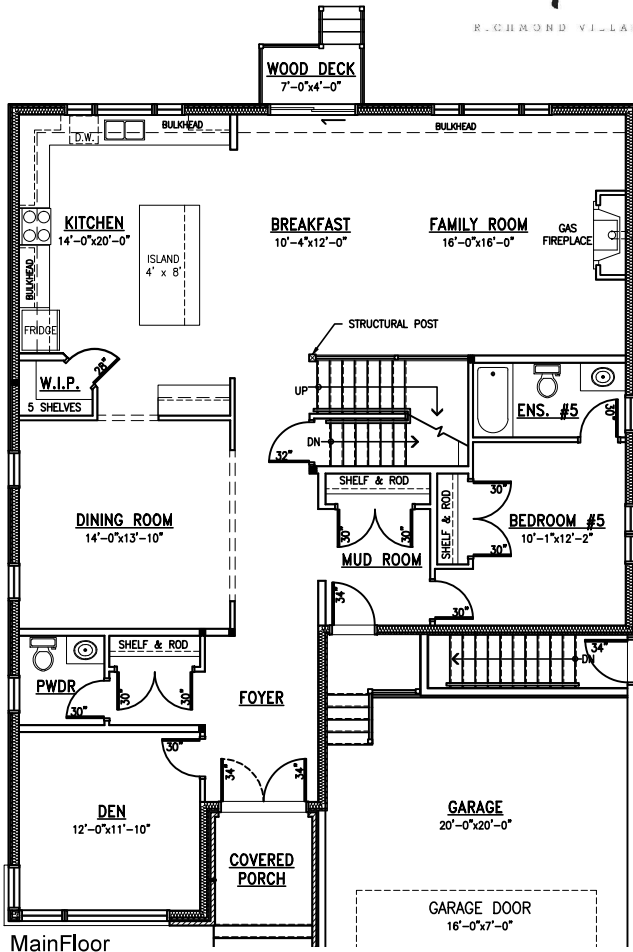
The Carson III w/ Additional Dwelling Unit

Minimum lot width: 50 FT

House Depth: apx. 61 FT

3,785 SQ FT

PLUS 810 SQ FT ADU



Second Floor

All measurements are approximate.
Actual usable floor space may vary from stated floor area.

Plans and specifications are subject to change without notice, E.&O.E.
Brochure Plan - September 3, 2024

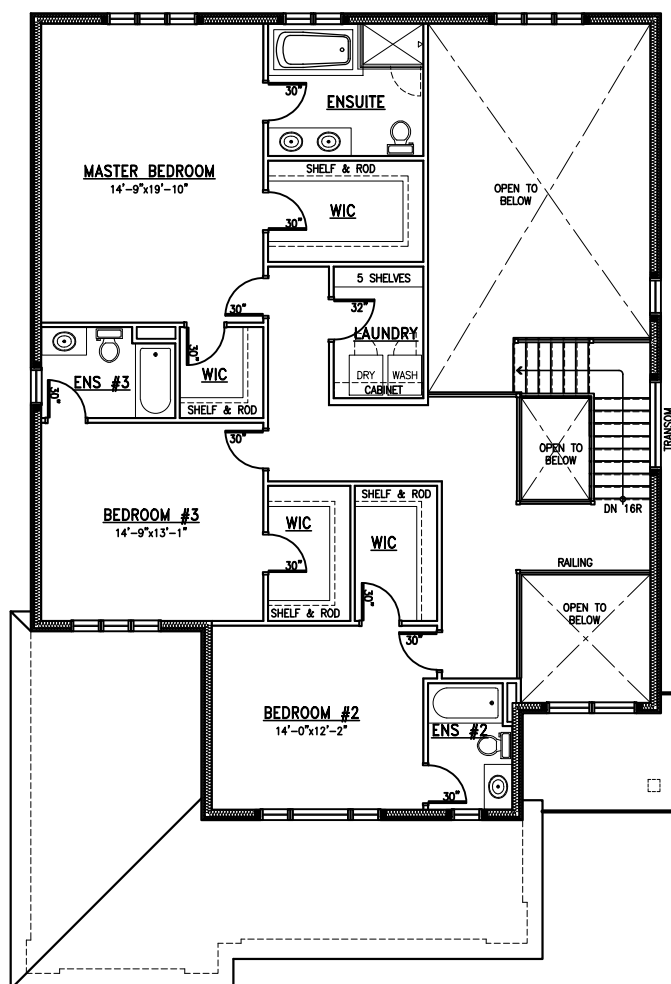
MetricHomes.com



613-296-7000



Incl. 405 SQ FT open to below



613-296-7000



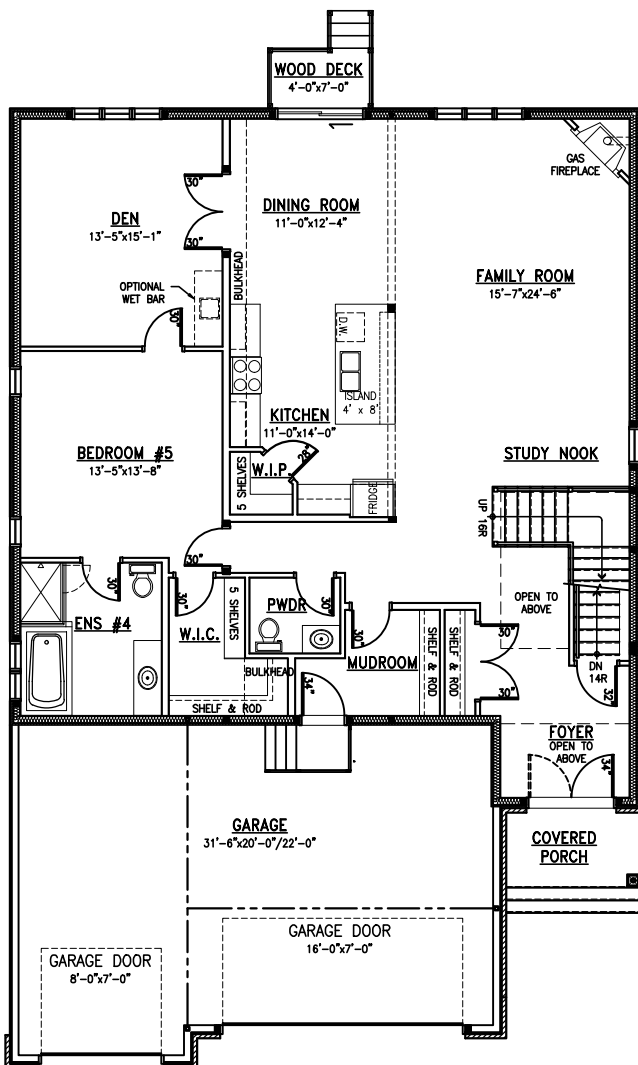
The Jayce III

Minimum lot width: 50 FT

House Depth: 64 FT

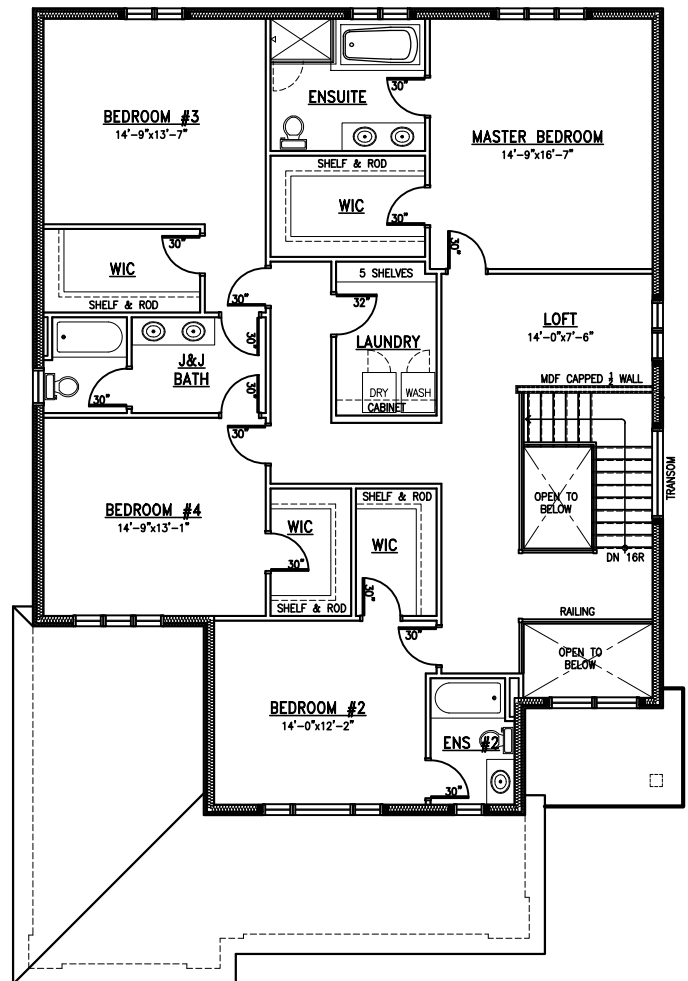
3,800 SQ FT

Incl. 75 SQ FT open to below



Main Floor
1,770 SQ FT

All measurements are approximate.
Actual usable floor space may vary from stated floor area.



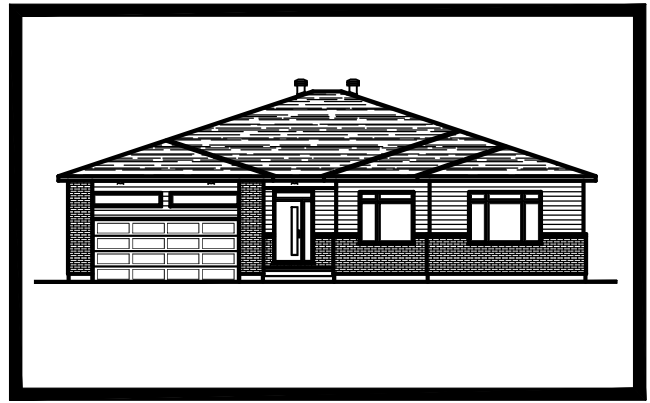
Second Floor
2,030 SQ FT

Plans and specifications are subject to change without notice, E.&O.E.
April 24, 2023

MetricHomes.com



613-296-7000



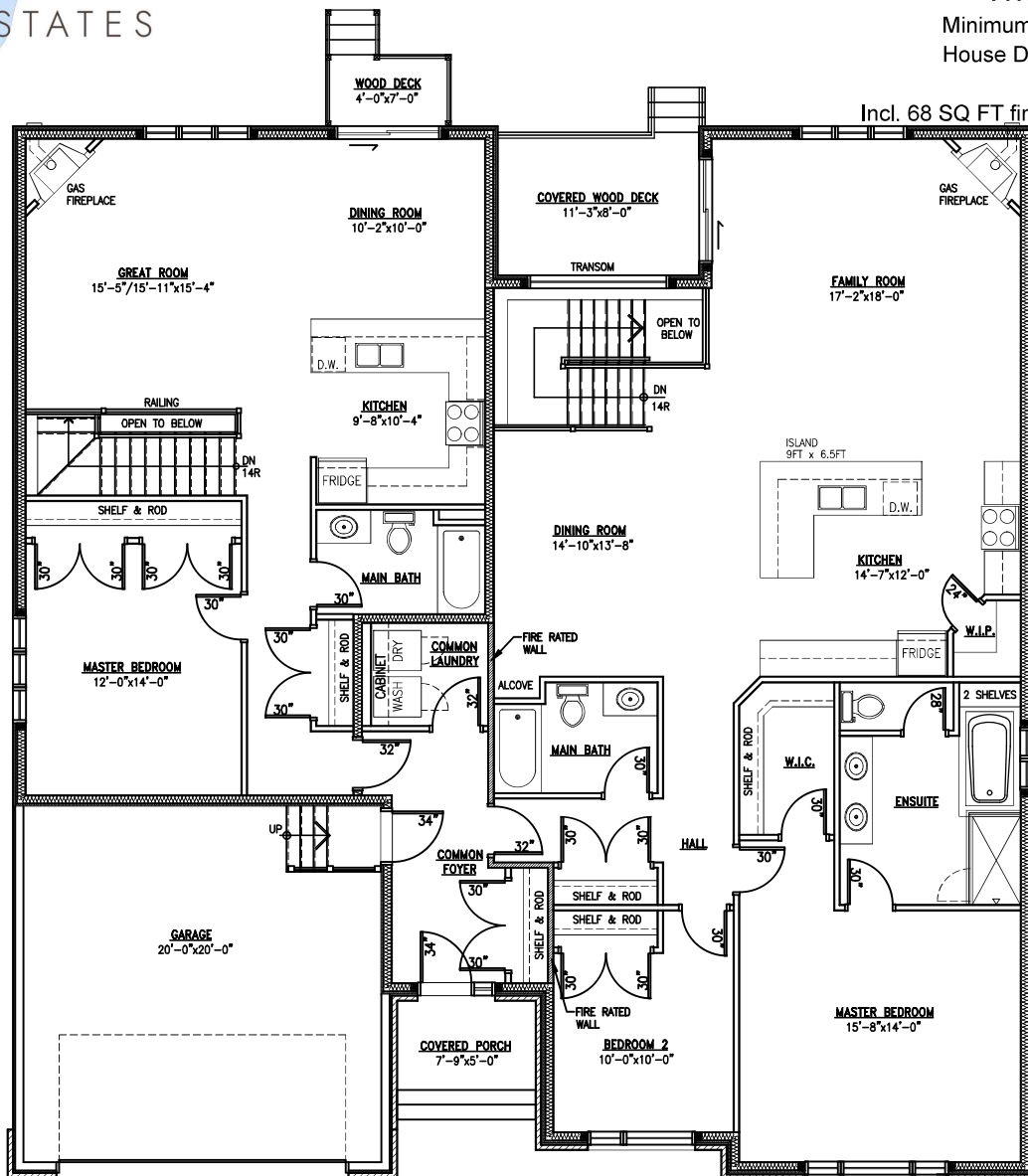
The Thetford I

Minimum lot width: 65 FT

House Depth: apx. 59 FT

2,775 SQ FT

Incl. 68 SQ FT finished basement



Main Floor

First Unit: 1,030 SQ FT
Second Unit: 1,795 SQ FT

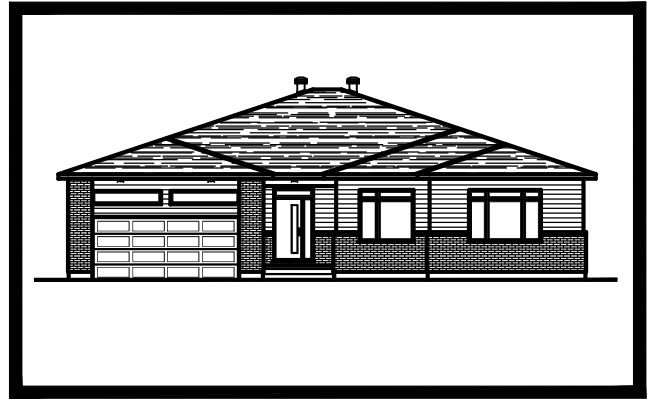
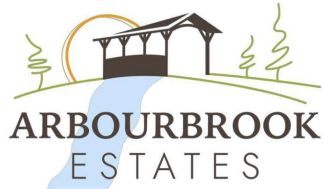
All measurements are approximate.
Actual usable floor space may vary from stated floor area.

Plans and specifications are subject to change without notice, E.&O.E.
July 25, 2024

MetricHomes.com



613-296-7000



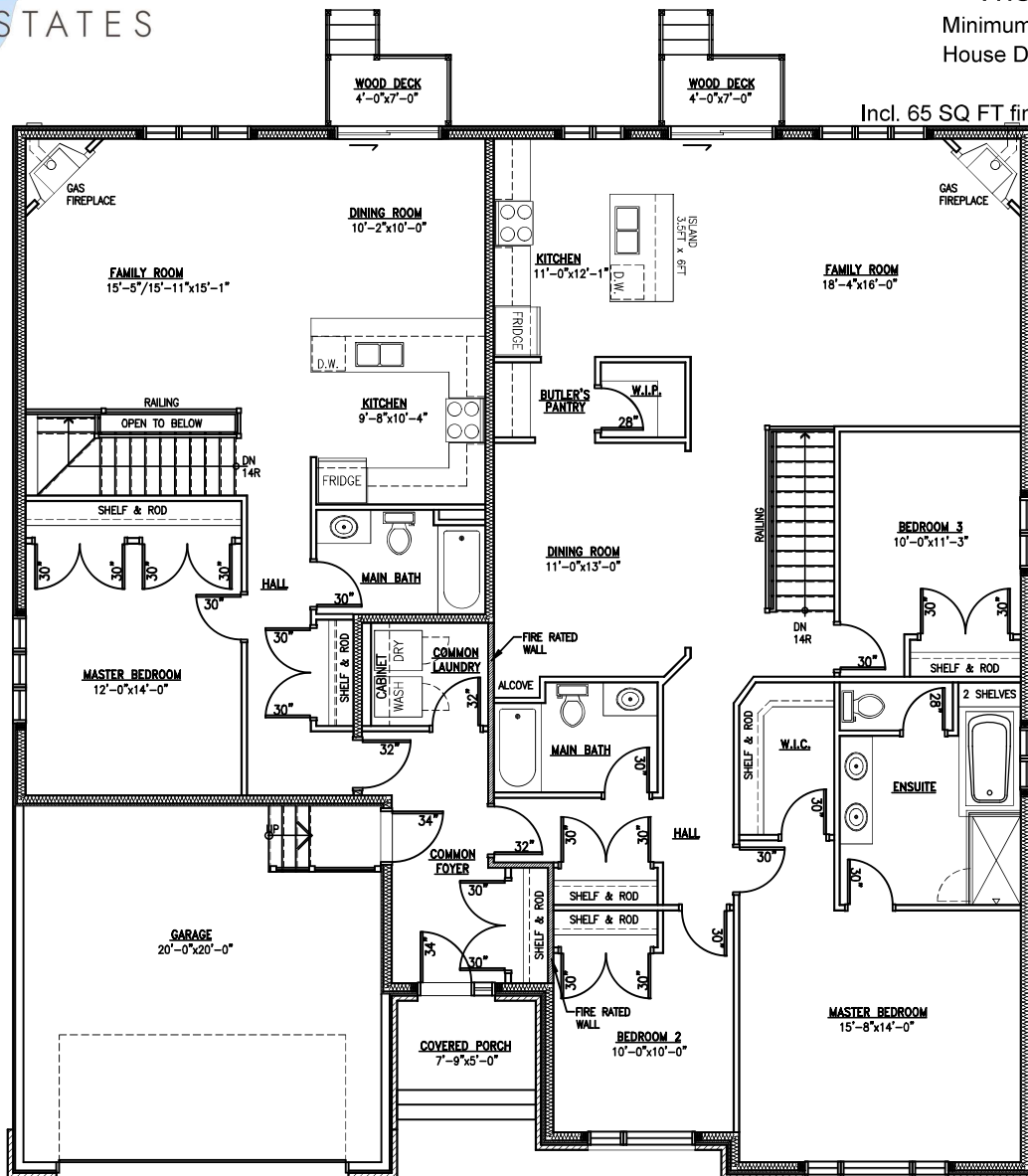
The Thetford II

Minimum lot width: 65 FT

House Depth: apx. 59 FT

2,865 SQ FT

Incl. 65 SQ FT finished basement



Main Floor

First Unit: 980 SQ FT
Second Unit: 1,890 SQ FT

All measurements are approximate.
Actual usable floor space may vary from stated floor area.

Plans and specifications are subject to change without notice, E.&O.E.
July 25, 2024

MetricHomes.com



613-296-7000



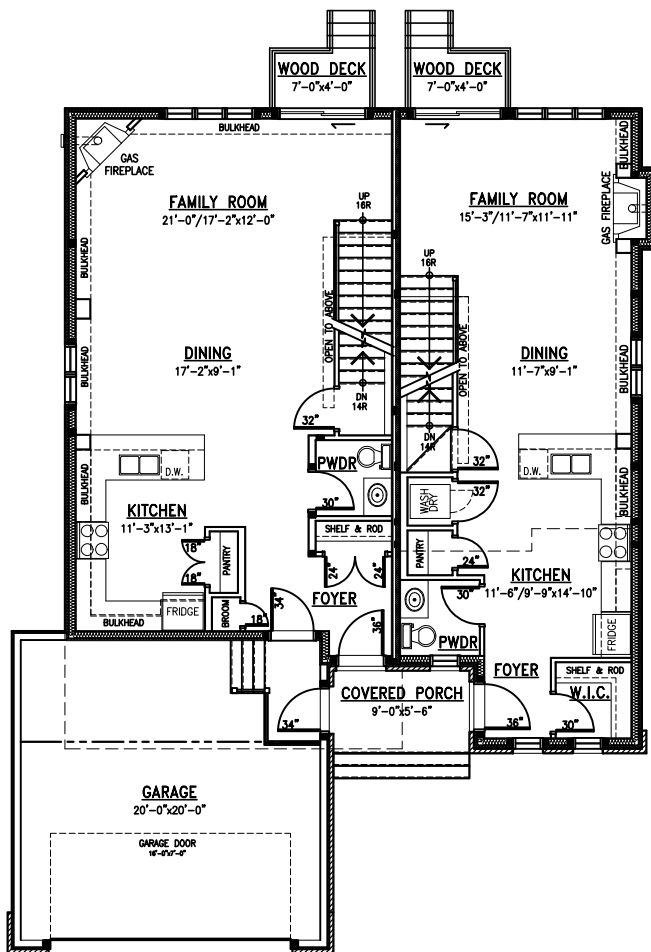
The Richmond

Minimum lot width: 50 FT

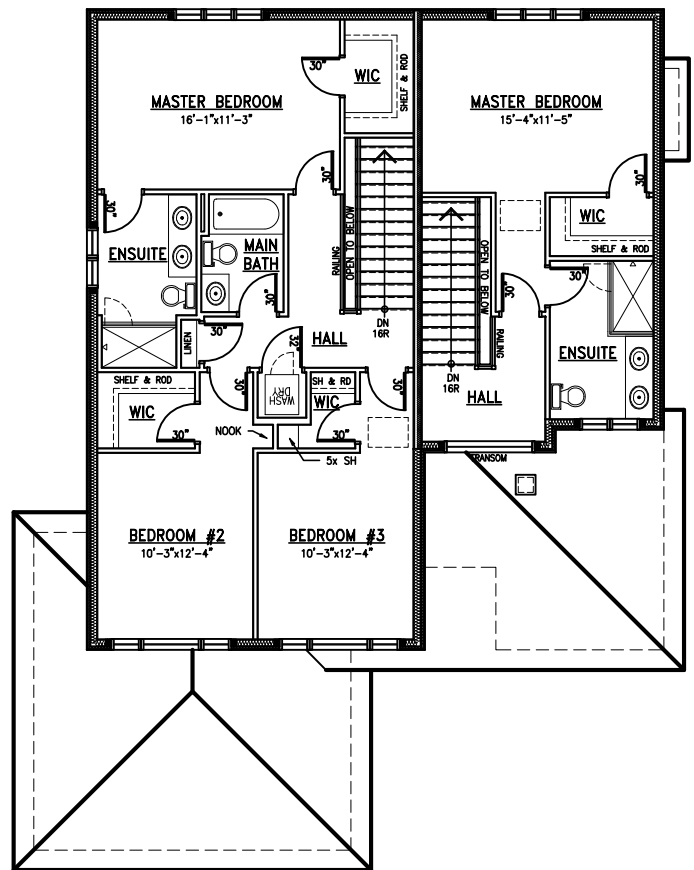
House Depth: apx. 57 FT

2,865 SQ FT

Incl. 15 SQ FT Open To Below



Main Floor



Second Floor

All measurements are approximate.
Actual usable floor space may vary from stated floor area.

Plans and specifications are subject to change without notice, E.&O.E.
June 19, 2023

MetricHomes.com



613-296-7000



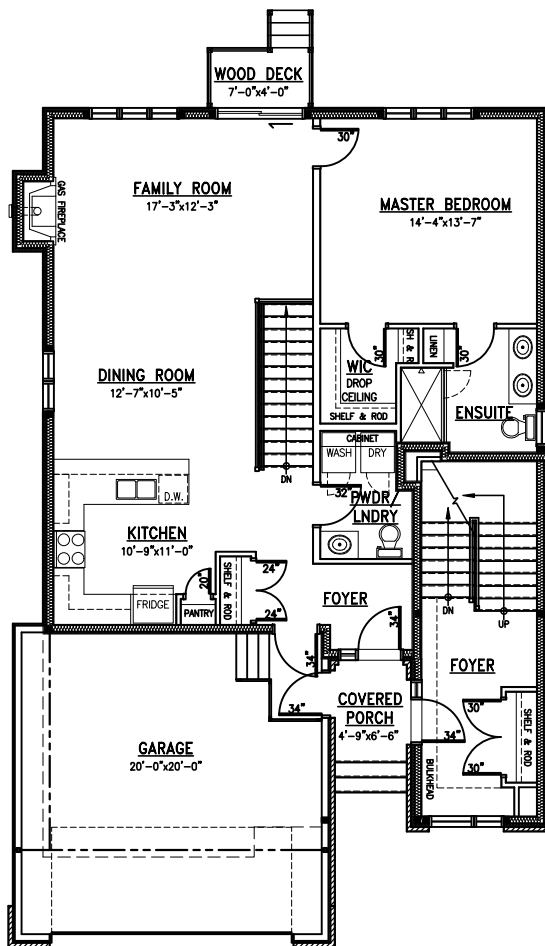
The Ottawa

Minimum lot width: 44 FT

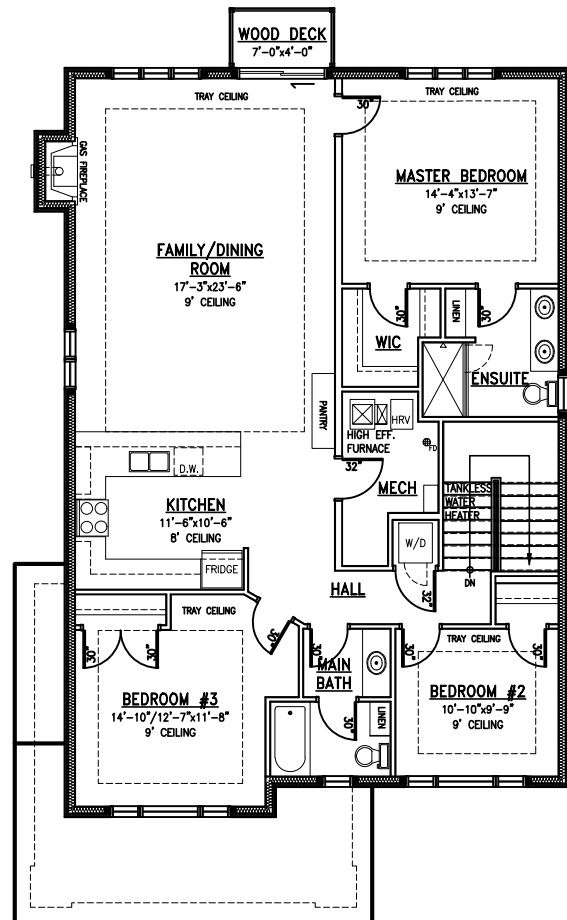
House Depth: 56 FT

2,945 SQ FT

Incl. 20 SQ FT finished basement



MainFloor



Second Floor

All measurements are approximate.
Actual usable floor space may vary from stated floor area.

Plans and specifications are subject to change without notice, E.&O.E.
May 8, 2023

MetricHomes.com

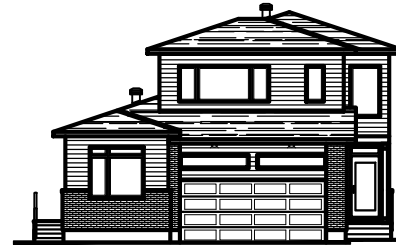


613-296-7000

TRAIL VIEW

FoxRun

R. GARDEN VILLAGE



The London IV

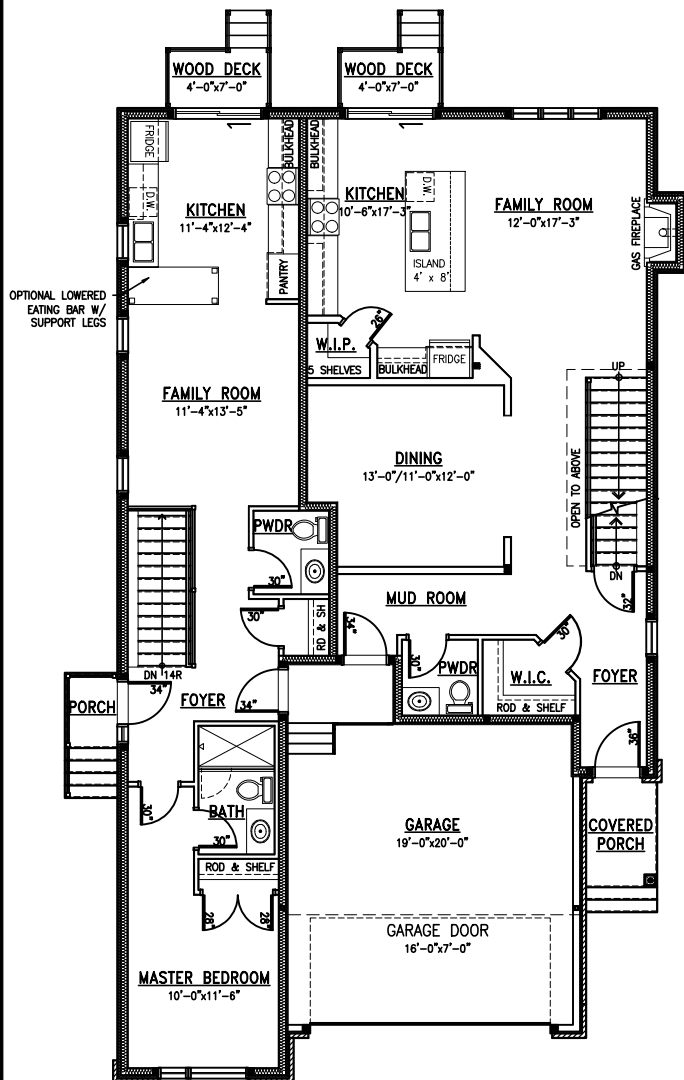
Minimum lot width: 44 FT

House Depth: 65 FT

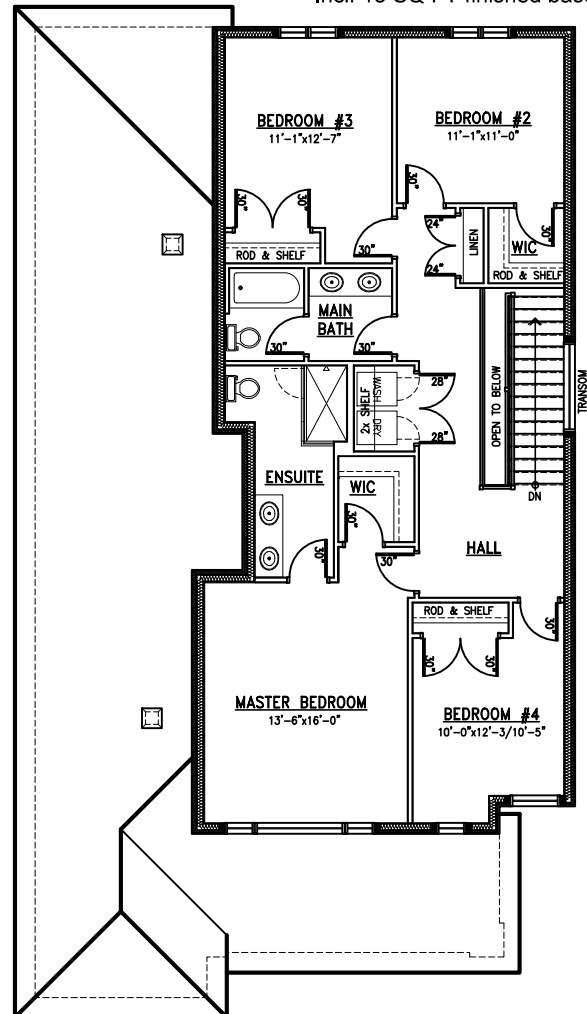
3,020 SQ FT

Incl. 25 SQ FT open to below

Incl. 15 SQ FT finished basement



Main Floor



Second Floor

Two-Storey: 2,215 SQ FT
Bungalow: 805 SQ FT

All measurements are approximate.
Actual usable floor space may vary from stated floor area.

Plans and specifications are subject to change without notice, E.&O.E.
March 15, 2024

MetricHomes.com



613-296-7000

TRAILVIEW



RICHMOND VILLAGE



The Windsor I

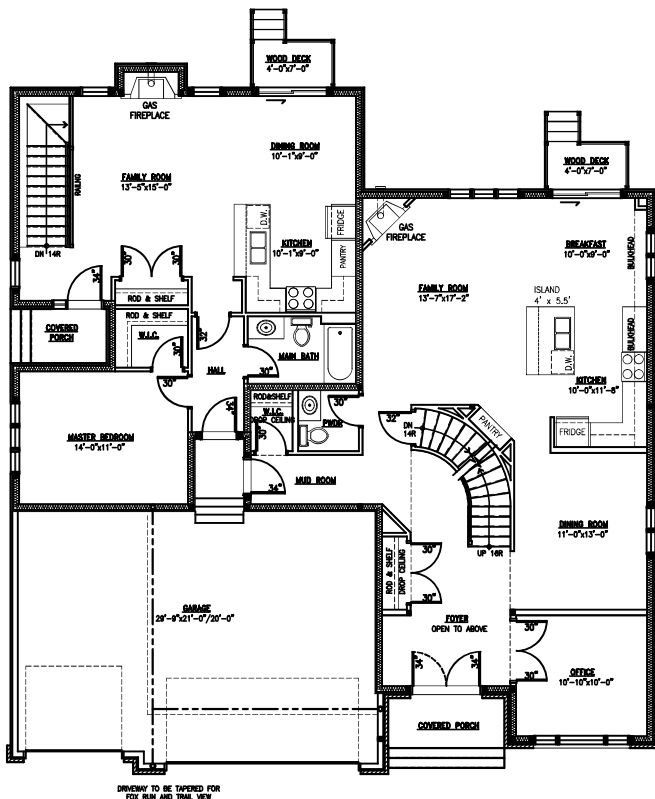
Minimum lot width: 62 FT

House Depth: apx. 57 FT

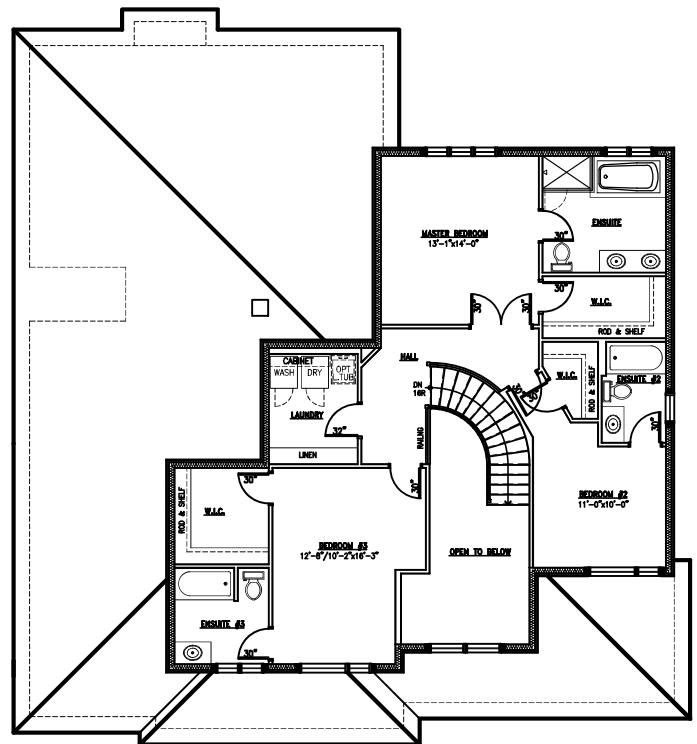
3,415 SQ FT

Incl. 145 SQ FT open to below

Incl. 20 SQ FT finished basement



DRIVEWAY TO BE TAPERED FOR
FOX RUN AND TRAIL VIEW



Two-Storey: 2,540 SQ FT

Bungalow: 875 SQ FT (incl. 20 SQFT Basement Landing)

MainFloor

Second Floor

All measurements are approximate.
Actual usable floor space may vary from stated floor area.

Plans and specifications are subject to change without notice. E.&O.E.
Dec 1, 2023

MetricHomes.com



613-296-7000



RICHMOND VILLAGE



The London I

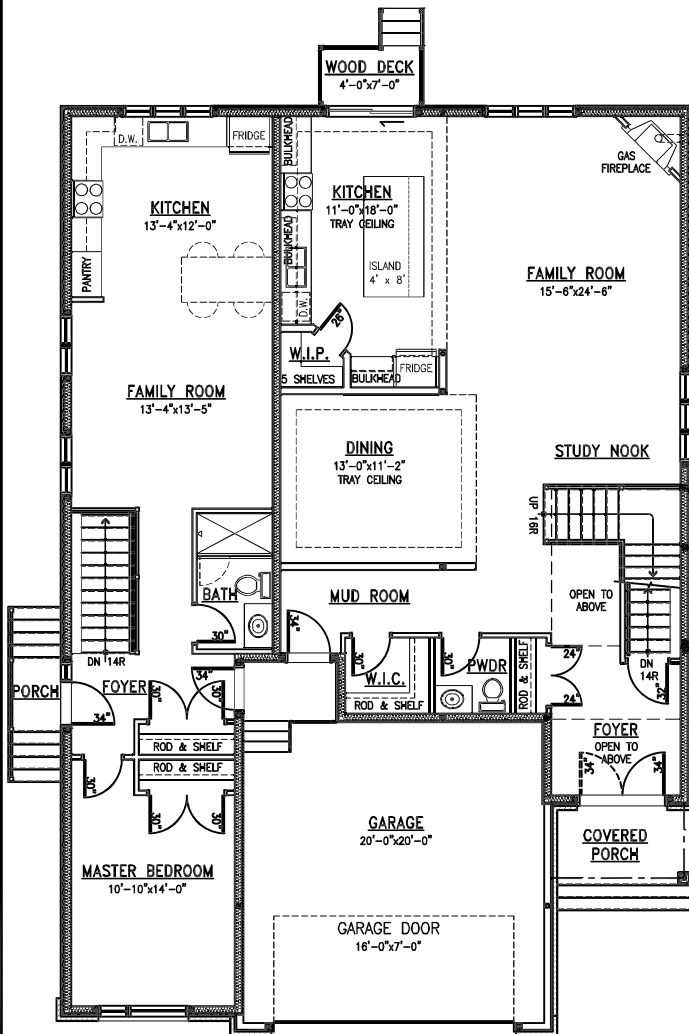
Minimum lot width: 50 FT

House Depth: 62 FT

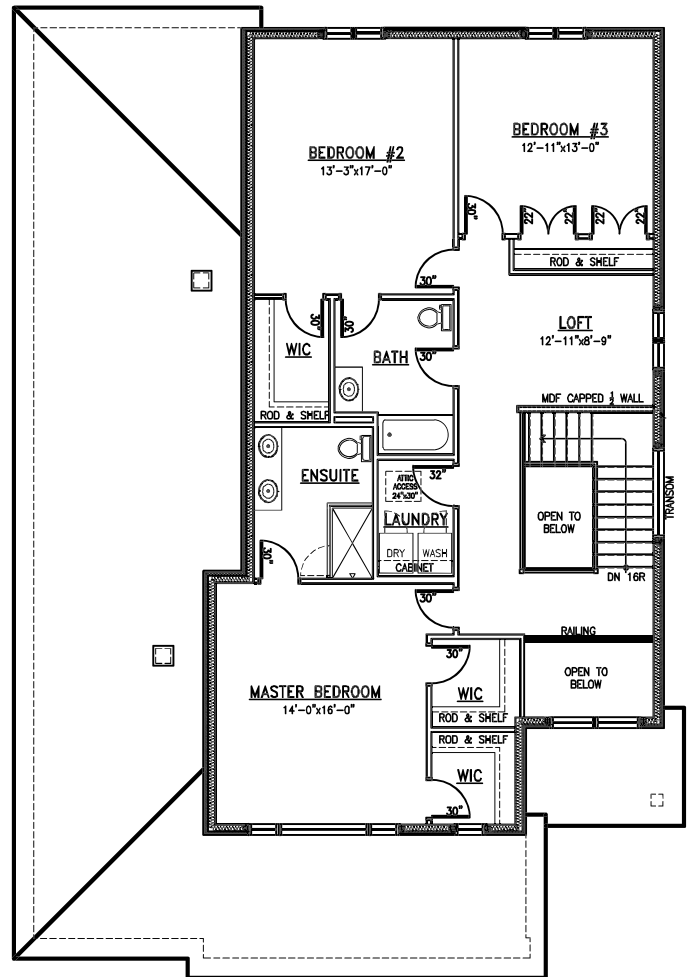
3,475 SQ FT

Incl. 75 SQ FT open to below

Incl. 15 SQ FT finished basement



Main Floor



Second Floor

Two-Storey: 2,645 SQ FT
Bungalow: 830 SQ FT

All measurements are approximate.
Actual usable floor space may vary from stated floor area.

Plans and specifications are subject to change without notice, E.&O.E.
June 23, 2023

MetricHomes.com



613-296-7000

TRAIL VIEW

FoxRun

R. GARDEN VILLAGE



The London II

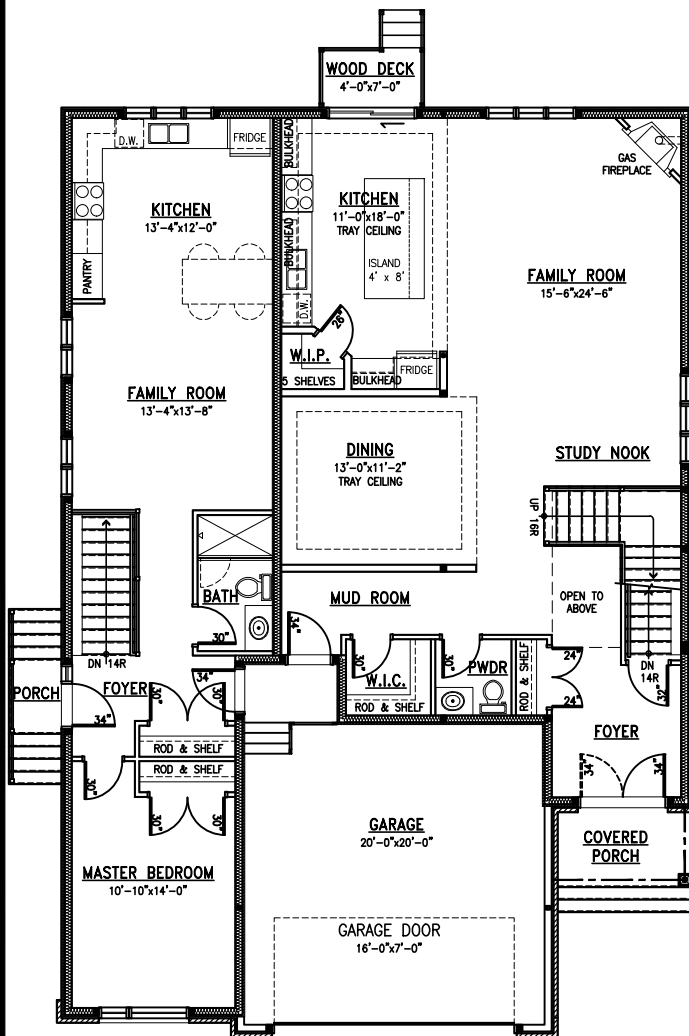
Minimum lot width: 50 FT

House Depth: 62 FT

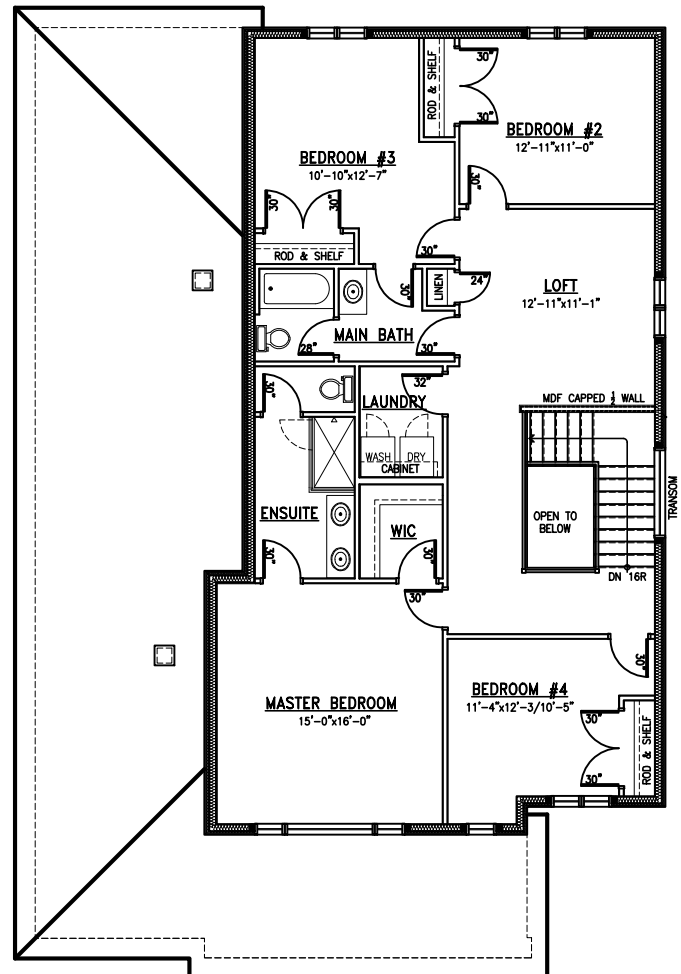
3,520 SQ FT

Incl. 30 SQ FT open to below

Incl. 15 SQ FT finished basement



Main Floor



Second Floor

Two-Storey: 2,690 SQ FT
Bungalow: 830 SQ FT

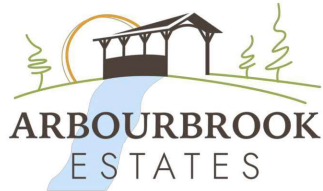
All measurements are approximate.
Actual usable floor space may vary from stated floor area.

Plans and specifications are subject to change without notice, E.&O.E.
June 23, 2023

MetricHomes.com



613-296-7000



The Windsor II

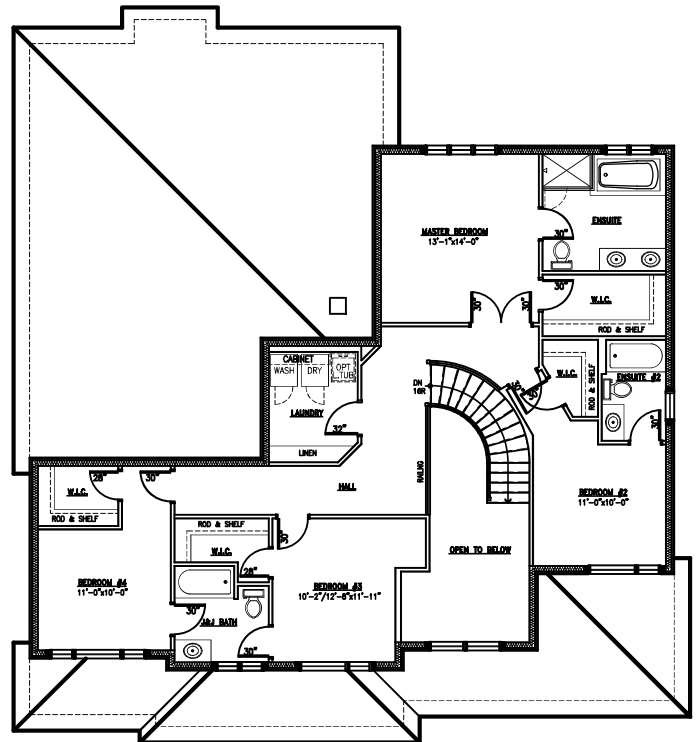
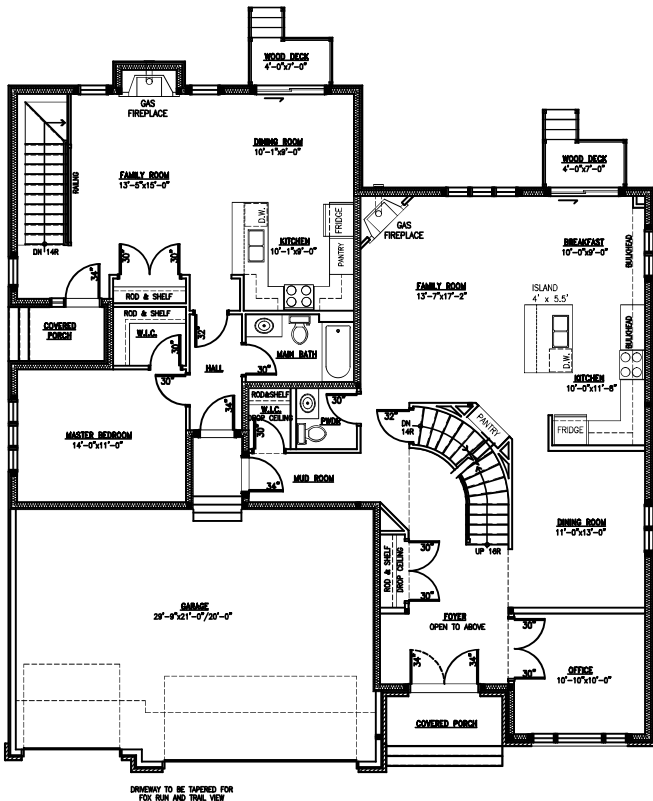
Minimum lot width: 62 FT

House Depth: apx. 57 FT

3,605 SQ FT

Incl. 145 SQ FT open to below

Incl. 20 SQ FT finished basement



Two-Storey: 2,730 SQ FT

Bungalow: 875 SQ FT (incl. 20 SQFT Basement Landing)

Main Floor

Second Floor

All measurements are approximate.
Actual usable floor space may vary from stated floor area.

Plans and specifications are subject to change without notice, E.&O.E.
Nov 20, 2023

MetricHomes.com

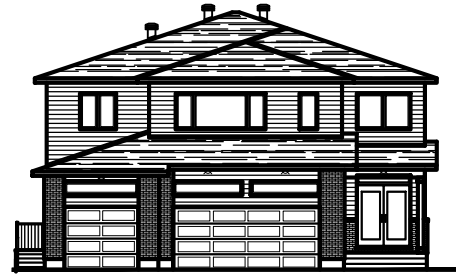


613-296-7000

TRAIL VIEW

FoxRun

R. GROUND VILLAGE



The London III

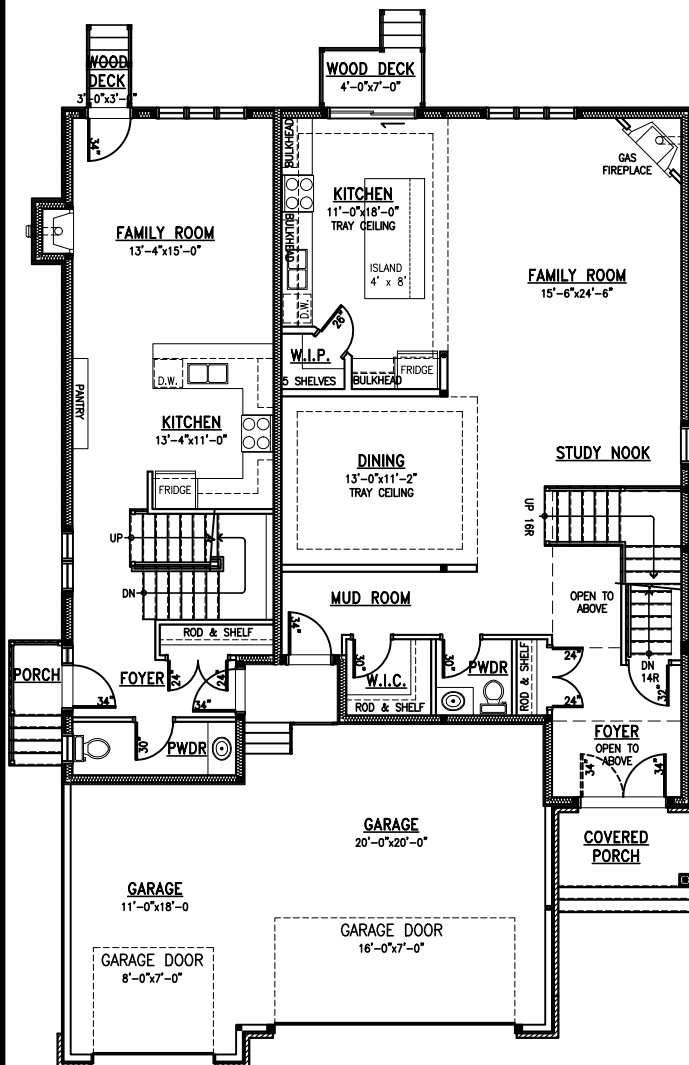
Minimum lot width: 50 FT

House Depth: 64 FT

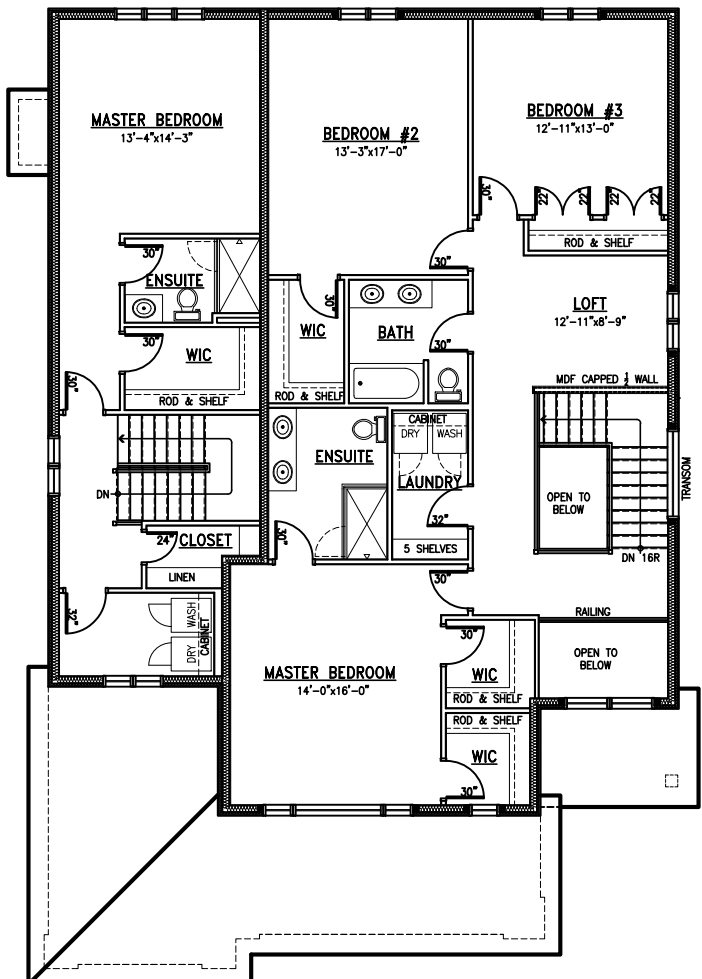
3,900 SQ FT

Incl. 75 SQ FT open to below

Incl. 30 SQ FT fin basement



Main Floor



Second Floor

Two-Storey: 2,625 SQ FT

Bungalow: 1,275 SQ FT

All measurements are approximate.
Actual usable floor space may vary from stated floor area.

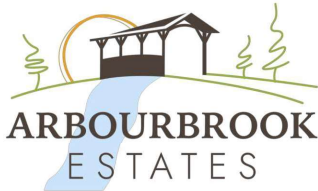
Plans and specifications are subject to change without notice, E.&O.E.
June 23, 2023

MetricHomes.com



613-296-7000

TRAILVIEW



RICHMOND VILLAGE



The Kanata

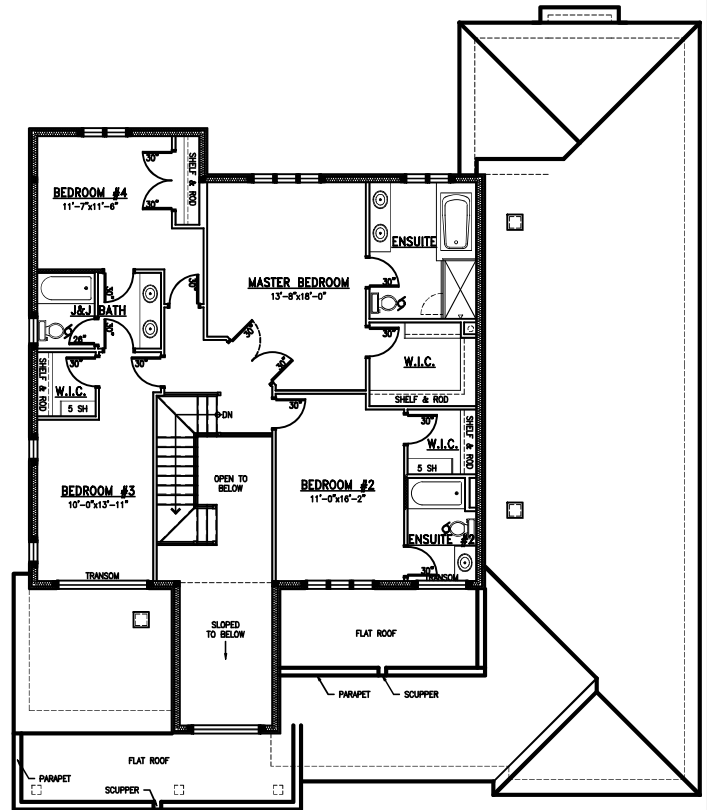
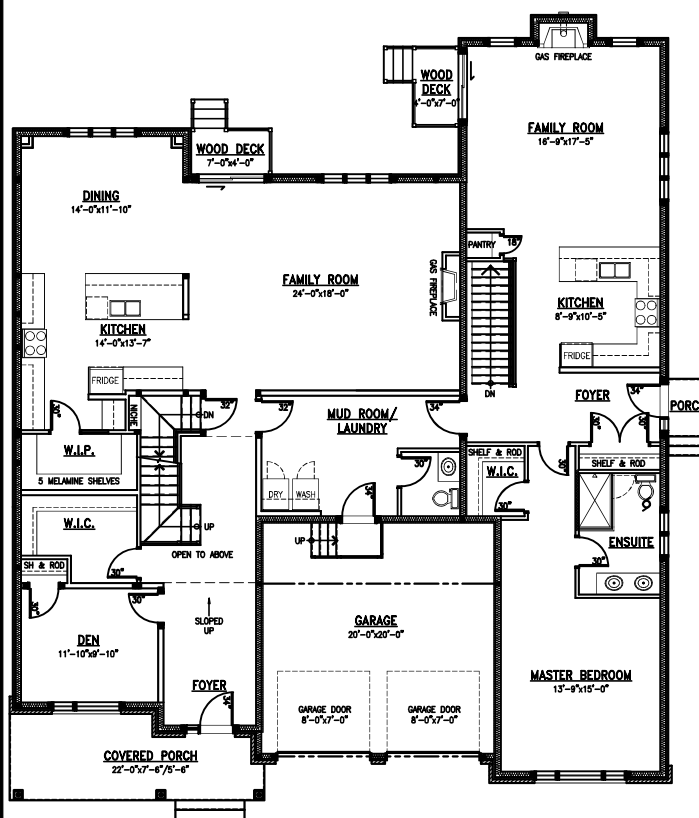
Minimum lot size 65 FT

House Depth: apx. 65 FT

4,300 SQ FT

Incl. 185 SQ FT open to below

Incl. 20 SQ FT finished basement



Main Floor

Two-Storey: 3,195 SQ FT
Bungalow: 1,105 SQ FT

Second Floor

All measurements are approximate.
Actual usable floor space may vary from stated floor area.

Plans and specifications are subject to change without notice. E.&O.E.
January 31, 2024

MetricHomes.com



613-296-7000



TRAIL VIEW



ARBOURBROOK
ESTATES



RICHMOND VILLAGE



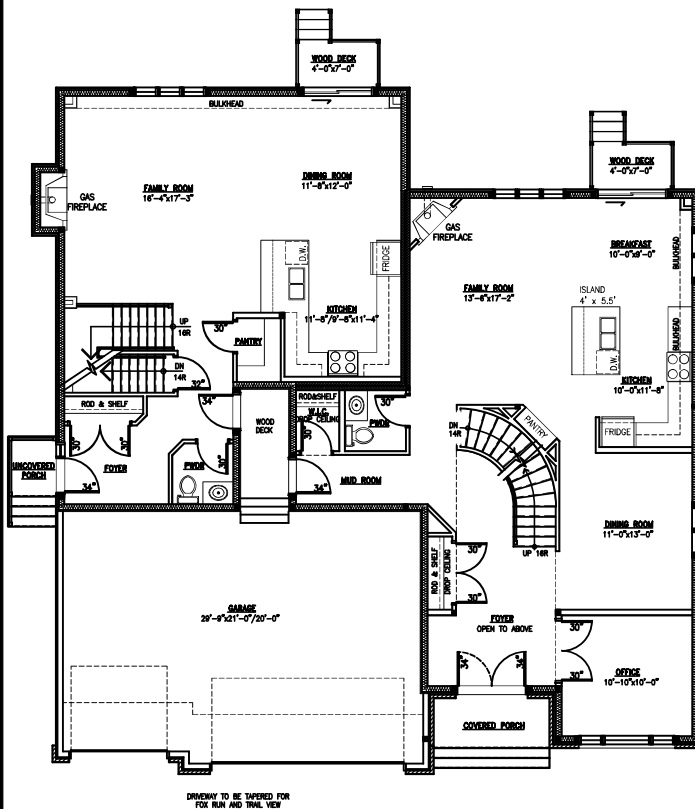
The Windsor III

Minimum lot width: 62 FT

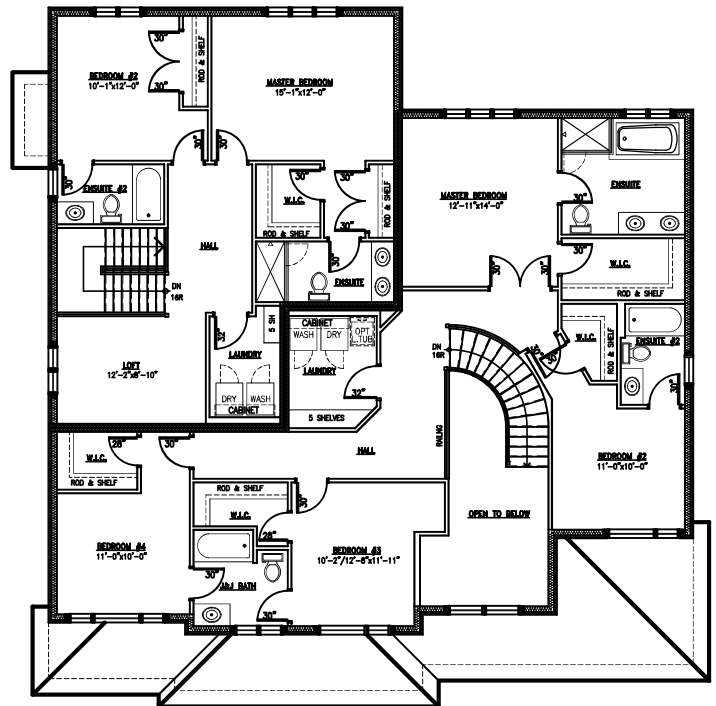
House Depth: apx. 57 FT

4,500 SQ FT

Incl. 145 SQ FT open to below



Main Floor



Second Floor

Main Two-Storey: 2,705 SQ FT
Secondary Two-Storey: 1,795 SQ FT

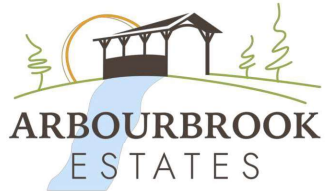
All measurements are approximate.
Actual usable floor space may vary from stated floor area.

Plans and specifications are subject to change without notice, E.&O.E.
Nov 20, 2023

MetricHomes.com



613-296-7000



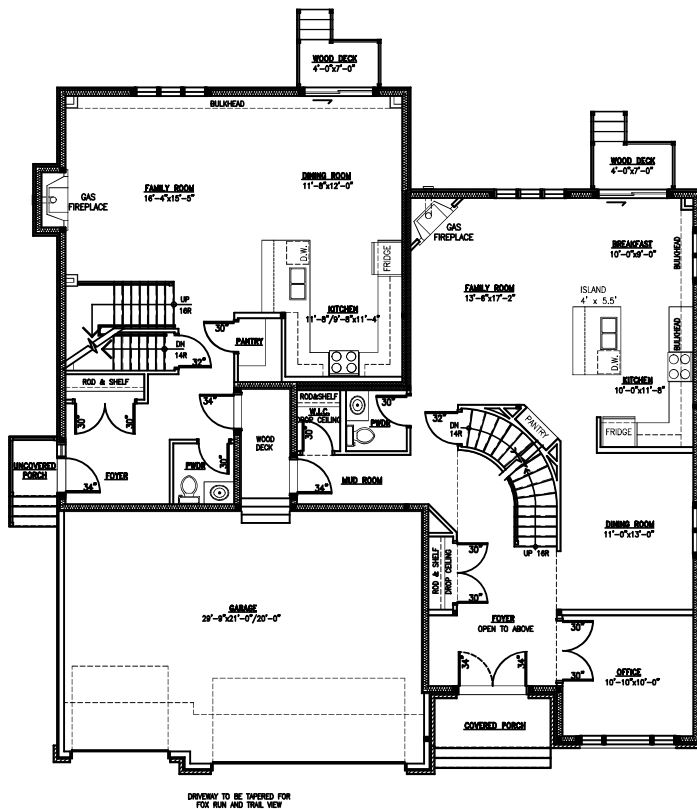
The Windsor IV

Minimum lot width: 62 FT

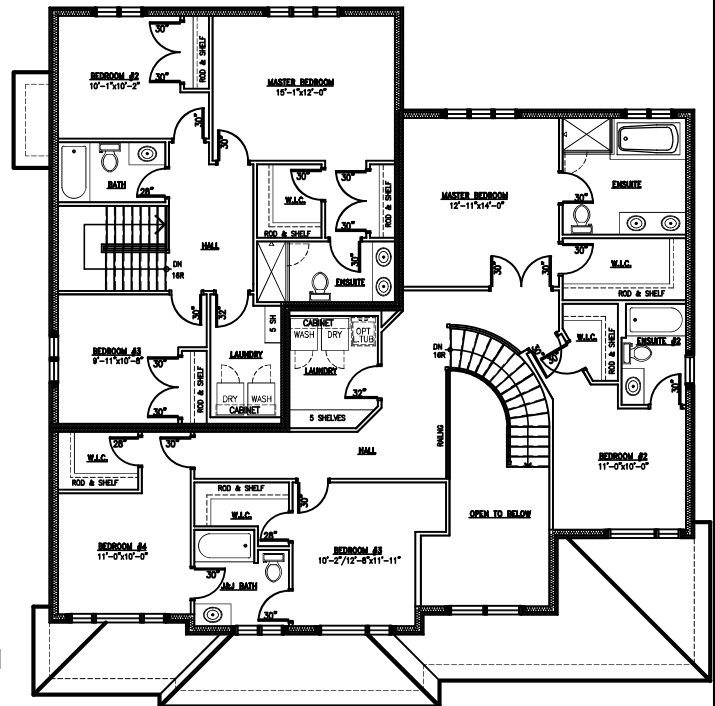
House Depth: apx. 57 FT

4,500 SQ FT

Incl. 145 SQ FT open to below



Main Floor



Second Floor

Main Two-Storey: 2,705 SQ FT
Secondary Two-Storey: 1,795 SQ FT

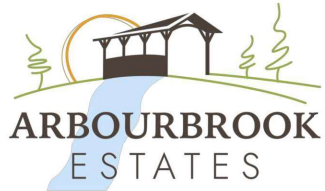
All measurements are approximate.
Actual usable floor space may vary from stated floor area.

Plans and specifications are subject to change without notice, E.&O.E.
Nov 20, 2023

MetricHomes.com



613-296-7000



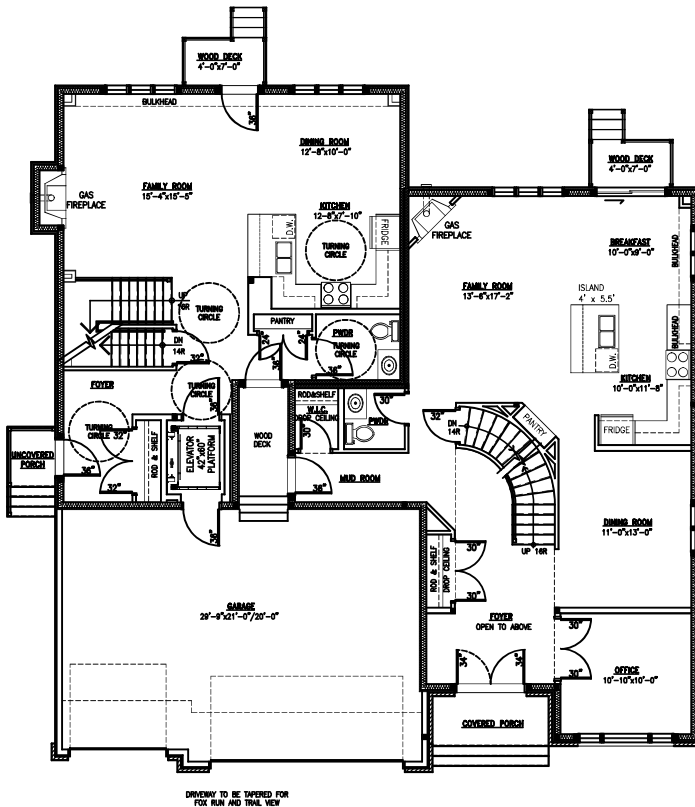
The Windsor IV-E

Minimum lot width: 62 FT

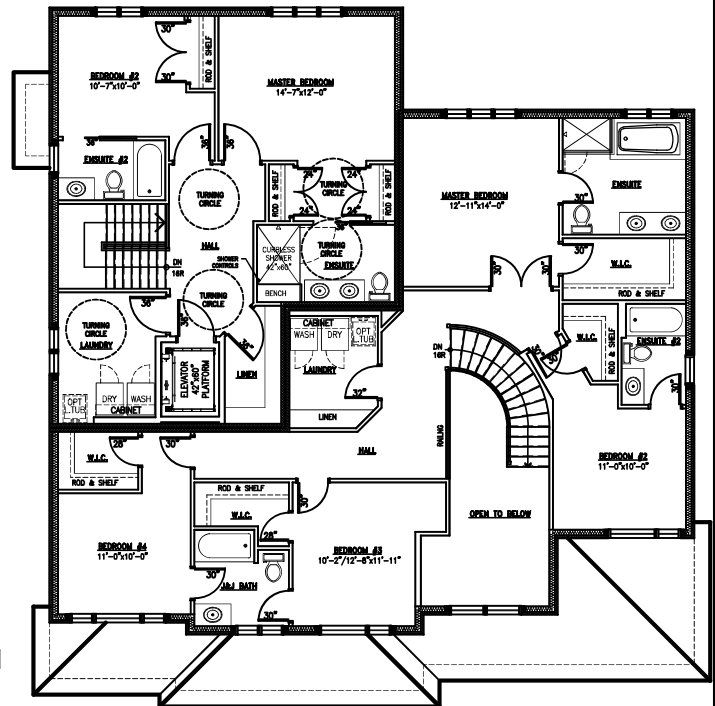
House Depth: apx. 57 FT

4,500 SQ FT

Incl. 145 SQ FT open to below



Main Floor



Second Floor

Main Two-Storey: 2,705 SQ FT
Secondary Two-Storey: 1,795 SQ FT

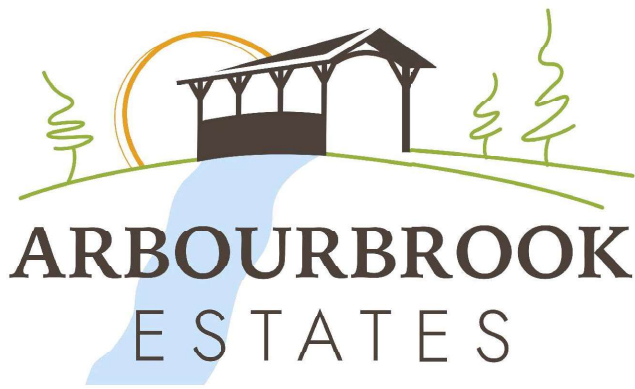
All measurements are approximate.
Actual usable floor space may vary from stated floor area.

Plans and specifications are subject to change without notice, E.&O.E.
Nov 20, 2023

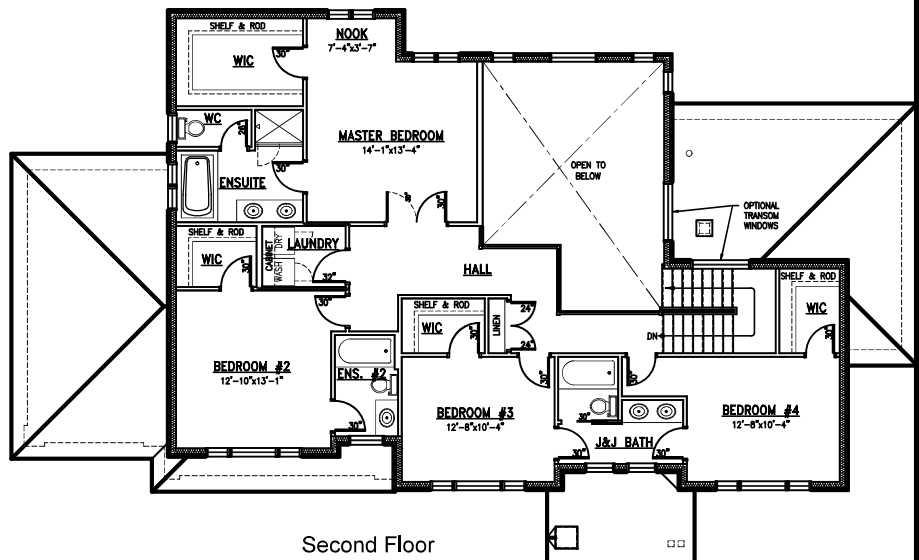
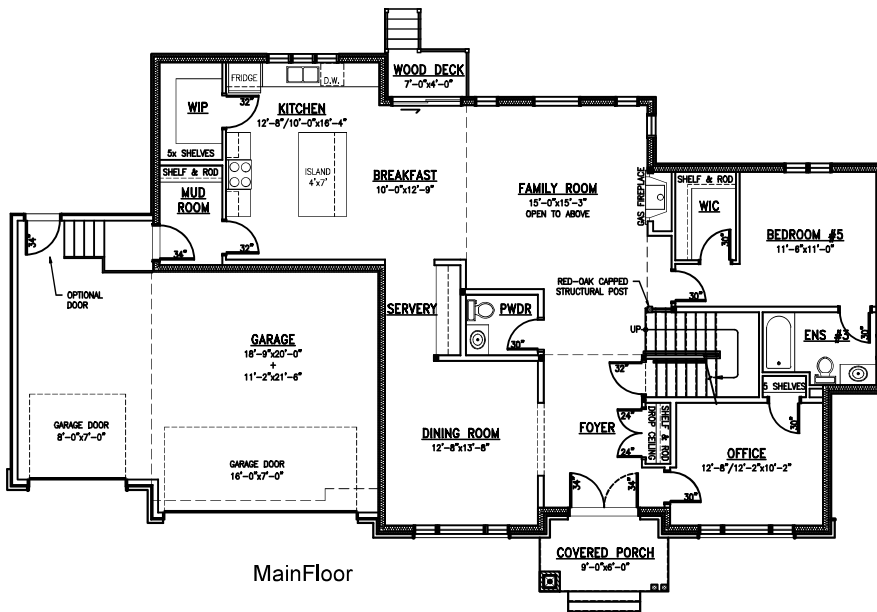
MetricHomes.com



613-296-7000



The Titan II
3,495 SQ FT
Incl. 280 SQ FT open to below



All measurements are approximate.
Actual usable floor space may vary from stated floor area.

Plans and specifications are subject to change without notice, E.&O.E.
December 5, 2024

MetricHomes.com



613-296-7000