



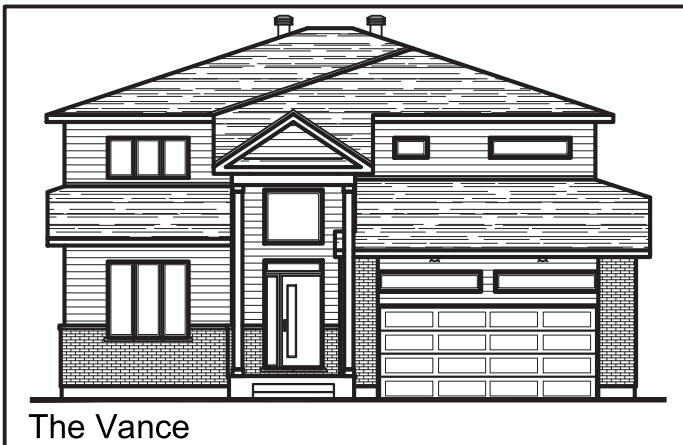
Two-Storey Designs



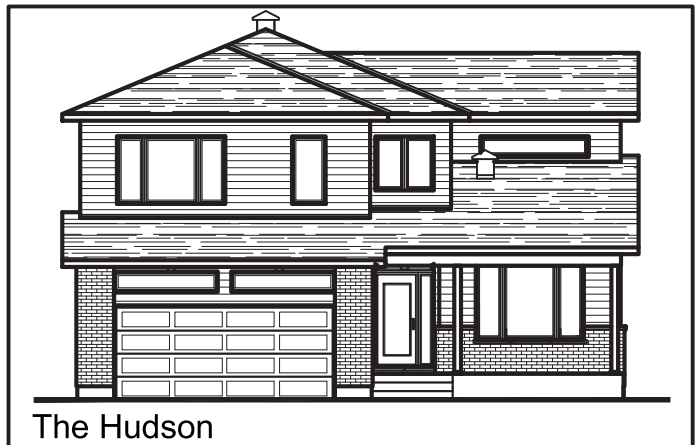
The Oliver I



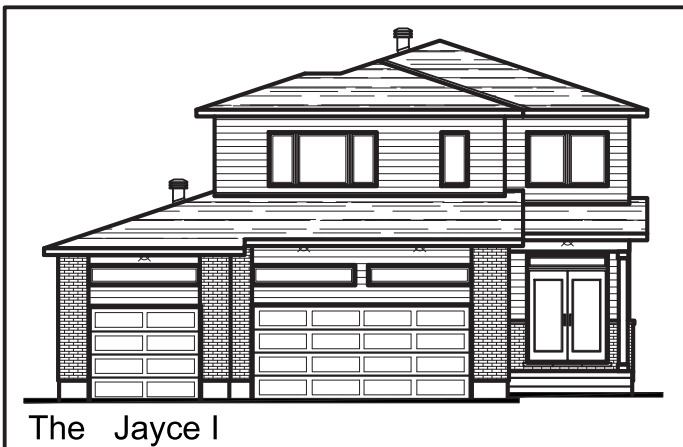
The Scott



The Vance



The Hudson



The Jayce I

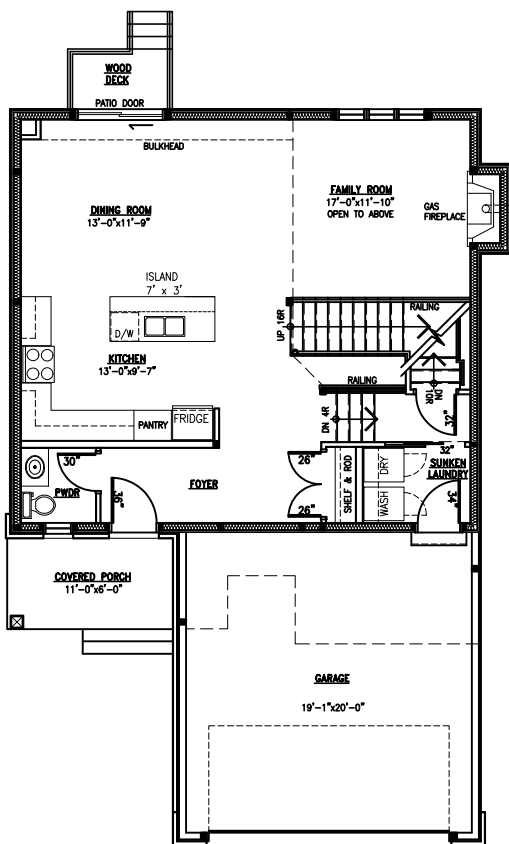


The Carson III





Incl. 154 SQ FT open to below

[illegible]

Second Floor

613-296-7000



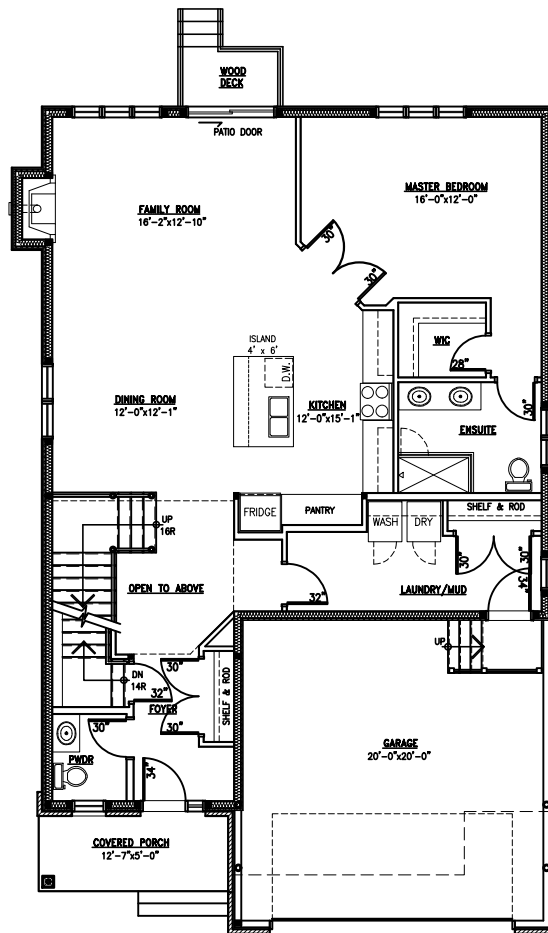
The Ethan

Minimum lot width: 42 FT

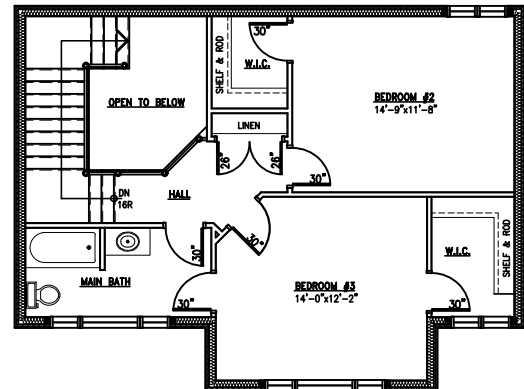
House Depth: apx. 55 FT

2,110 SQ FT

Incl. 67 SQ FT open to below



Main Floor



Second Floor

All measurements are approximate.
Actual usable floor space may vary from stated floor area.

Plans and specifications are subject to change without notice. E.&O.E.
January 31, 2021

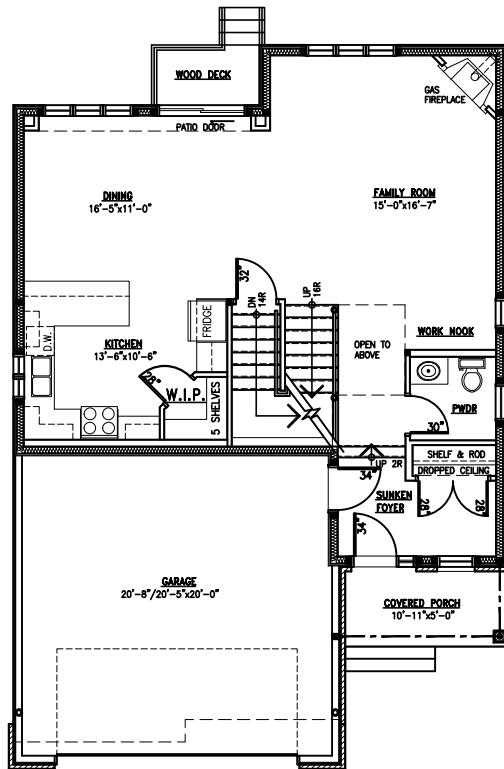
MetricHomes.com



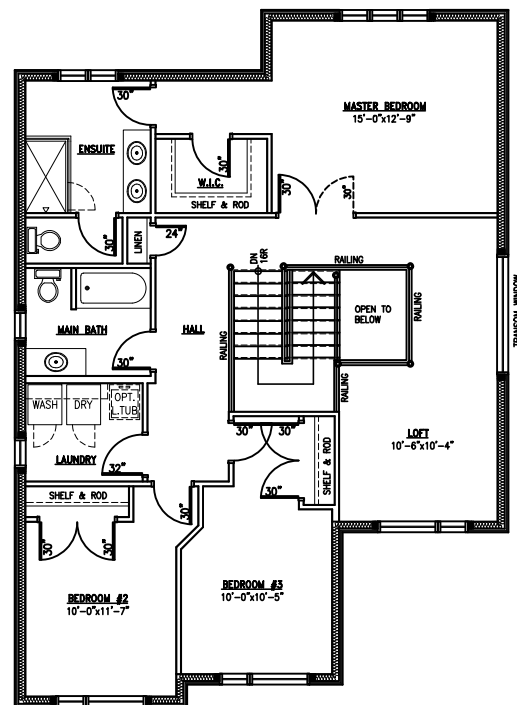
613-296-7000



Incl. 27 SQ FT open to below



MainFloor

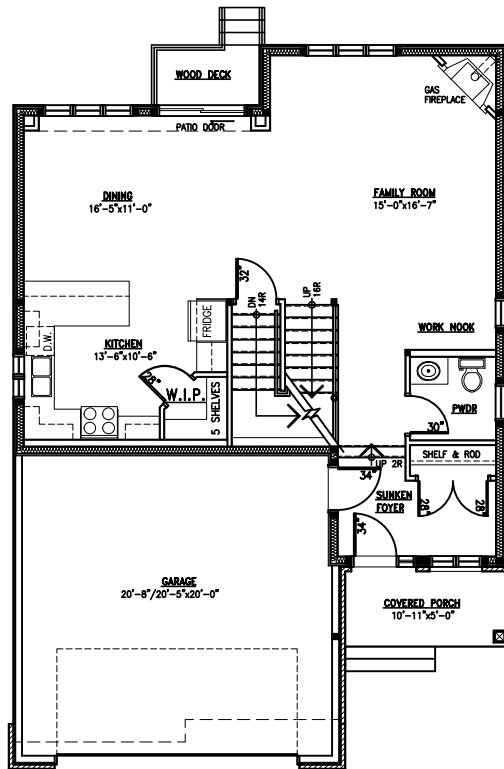


Second Floor

613-296-7000



Minimum lot width: 41 FT
House Depth: apx. 48 FT
2,215 SQ FT

[illegible]

613-296-7000



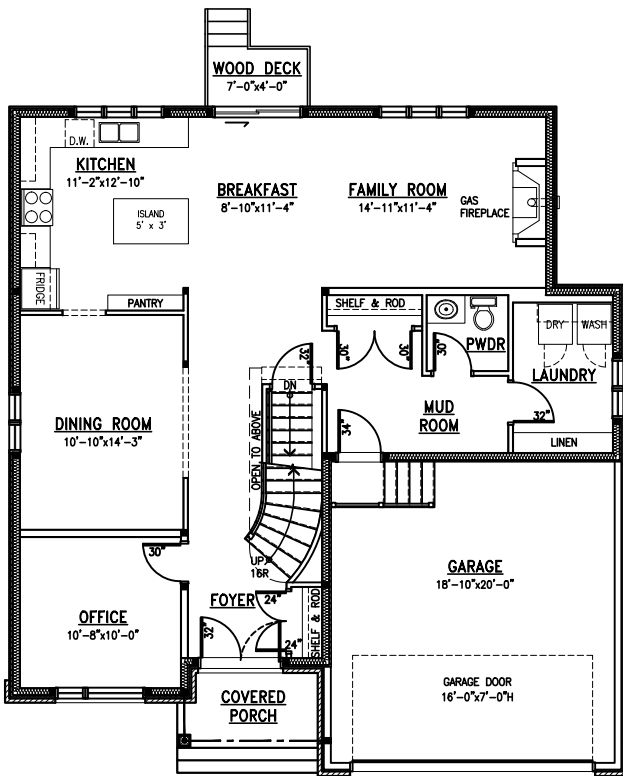
The Oliver I

Minimum lot width: 49 FT

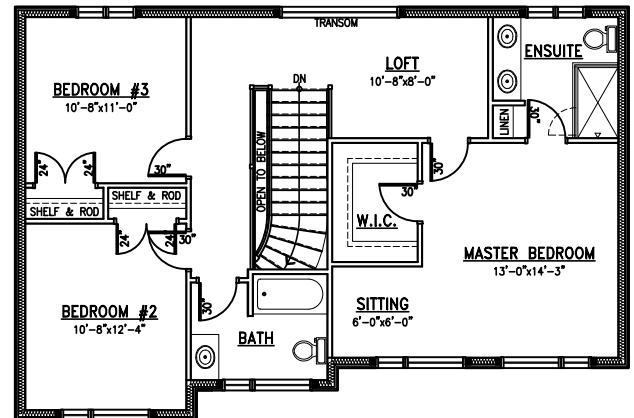
House Depth: apx. 45 FT

2,255 SQ FT

Incl. 8 SQ FT open to below



Main Floor



Second Floor

All measurements are approximate.
Actual usable floor space may vary from stated floor area.

Plans and specifications are subject to change without notice. E.&O.E.
January 31, 2021

MetricHomes.com



613-296-7000



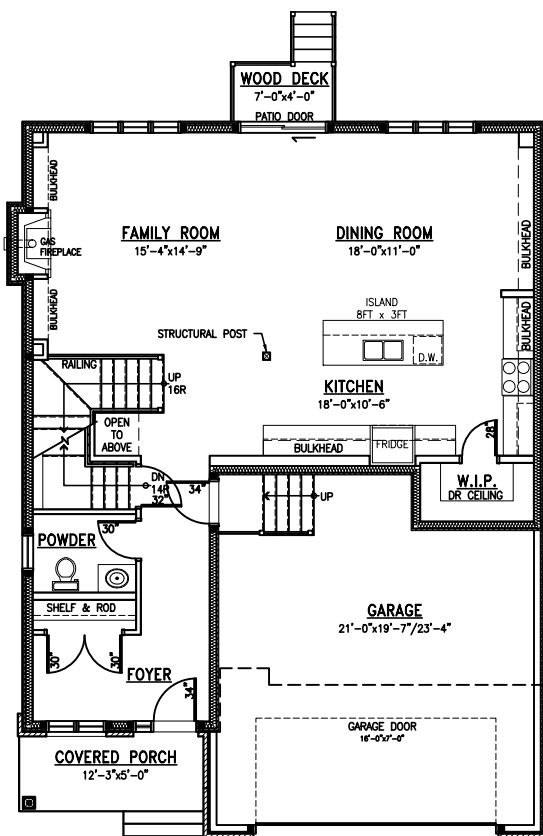
The Jacob

Minimum lot width: 44 FT

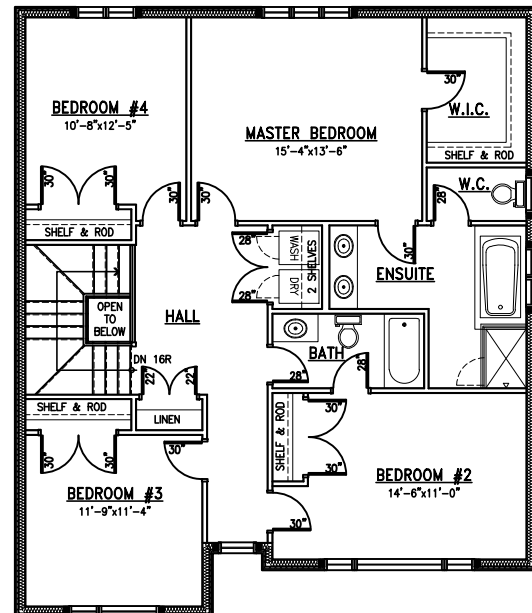
House Depth: apx. 48 FT

2,395 SQ FT

Incl. 8 SQ FT open to below



Main Floor



Second Floor

All measurements are approximate.
Actual usable floor space may vary from stated floor area.

Plans and specifications are subject to change without notice. E.&O.E.
January 22, 2021

MetricHomes.com



613-296-7000



Incl. 15 SQ FT open to below



613-296-7000



The Scott

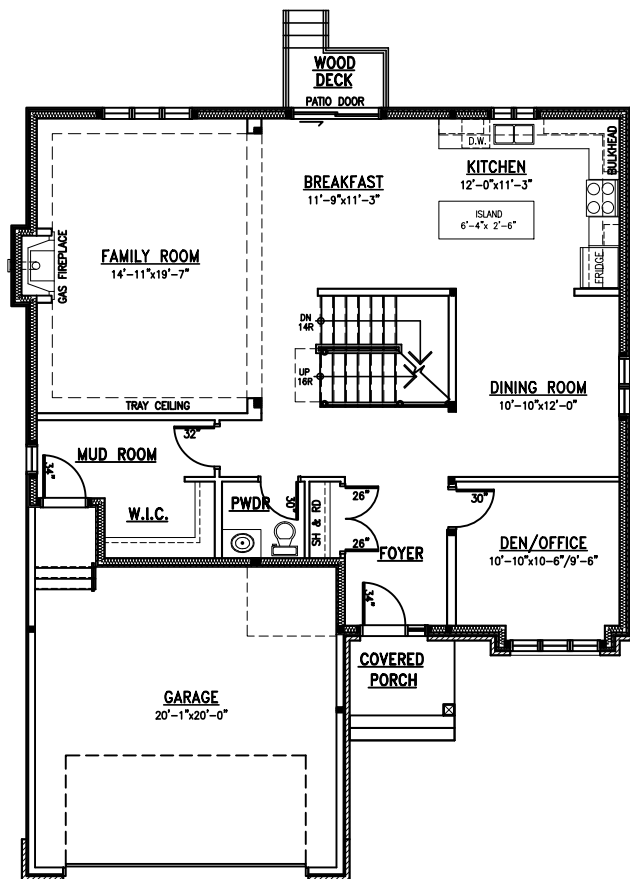
Minimum lot width: 49 FT

House Depth: apx. 52 FT

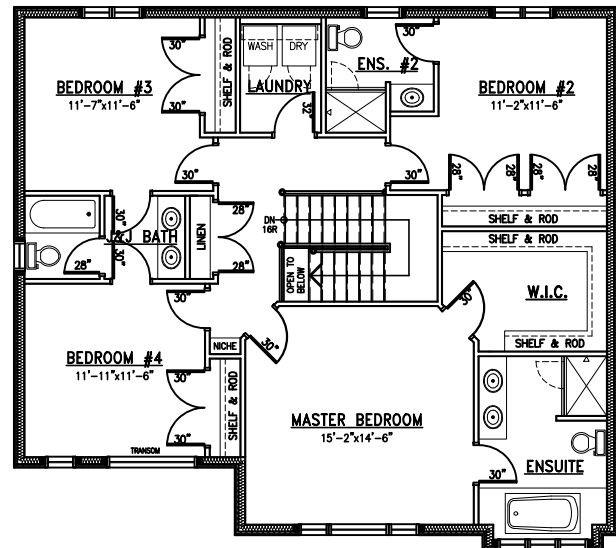
2,665 SQ FT

Incl. 6 SQ FT open to below

Incl. 19 SQ FT finished basement



Main Floor



Second Floor

All measurements are approximate.
Actual usable floor space may vary from stated floor area.

Plans and specifications are subject to change without notice. E.&O.E.
February 4, 2021

MetricHomes.com



613-296-7000



2,685 SQ FT

Incl. 8 SQ FT open to below



Plans and specifications are subject to change without notice. E.&O.E.
February 5, 2021



METRIC
H O M E S

613-296-7000



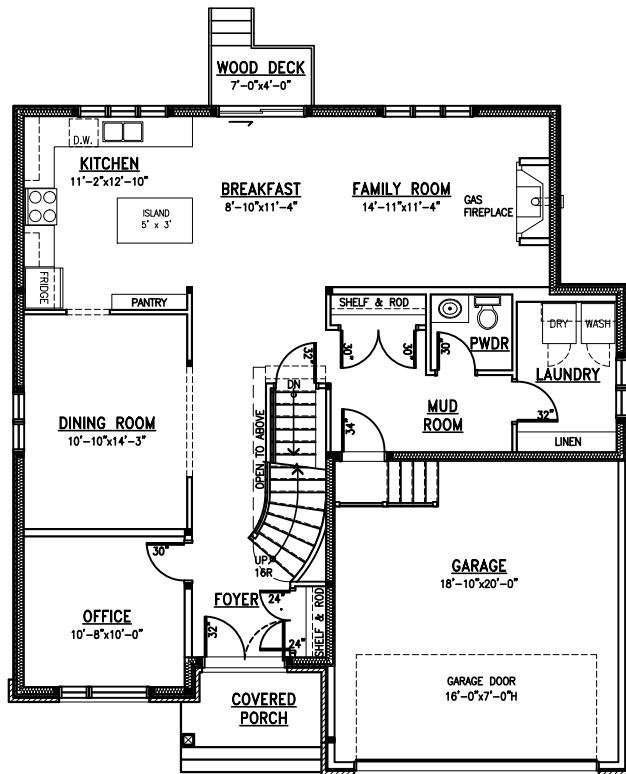
The Oliver III

Minimum lot width: 49 FT

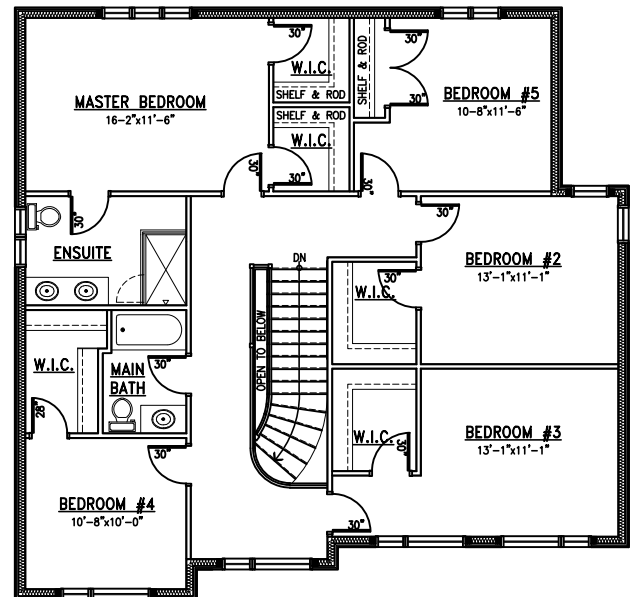
House Depth: apx. 45 FT

2,685 SQ FT

Incl. 8 SQ FT open to below



MainFloor



Second Floor

All measurements are approximate.
Actual usable floor space may vary from stated floor area.

Plans and specifications are subject to change without notice. E.&O.E.
February 5, 2021

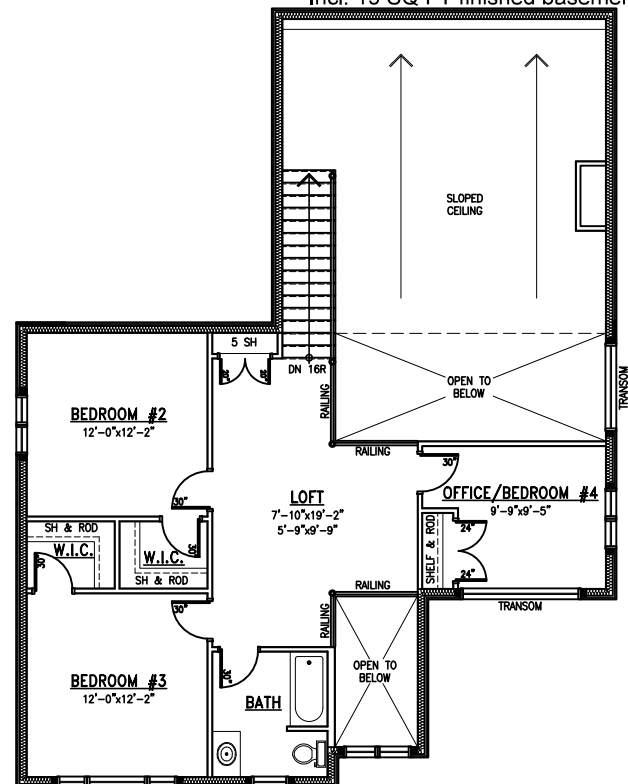
MetricHomes.com



613-296-7000



Incl. 19 SQ FT finished basement



Second Floor

613-296-7000



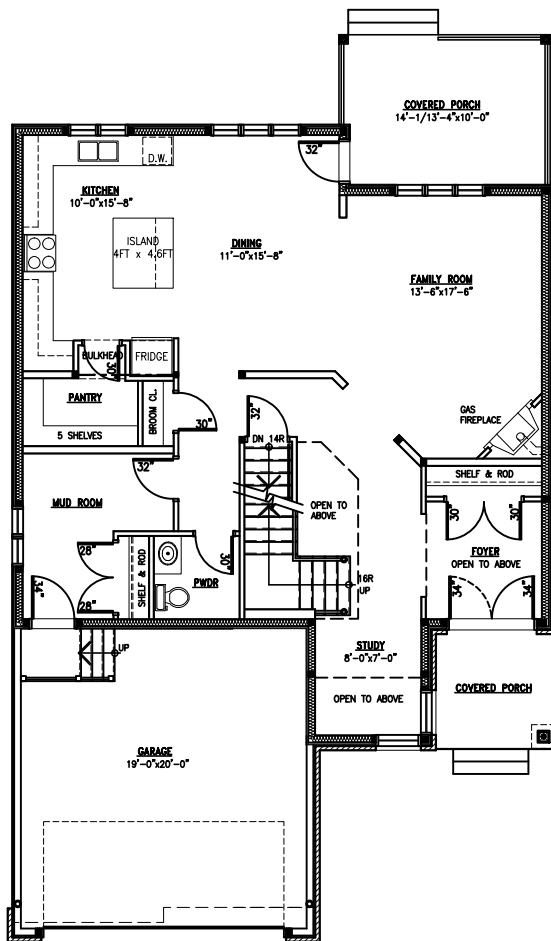
The Owen

Minimum lot width: 44 FT

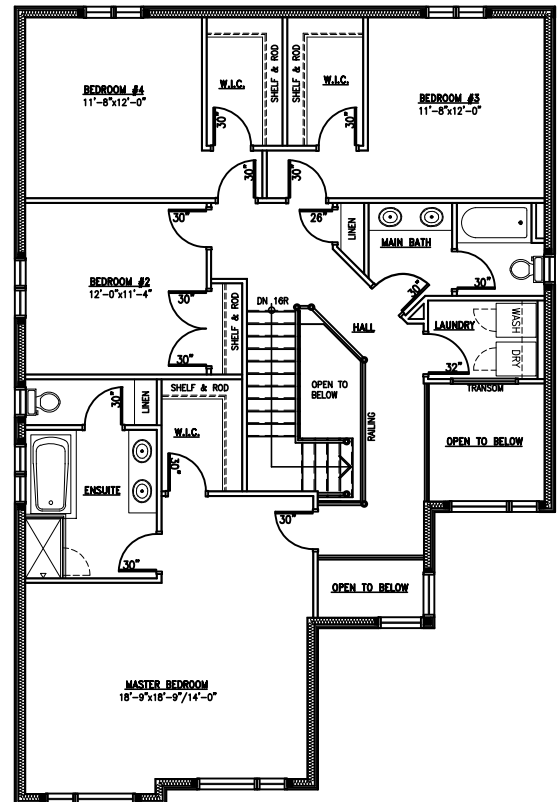
House Depth: apx. 55 FT

2,855 SQ FT

Incl. 118 SQ FT open to below



Main Floor



Second Floor

All measurements are approximate.
Actual usable floor space may vary from stated floor area.

Plans and specifications are subject to change without notice. E.&O.E.
January 22, 2021

MetricHomes.com



613-296-7000

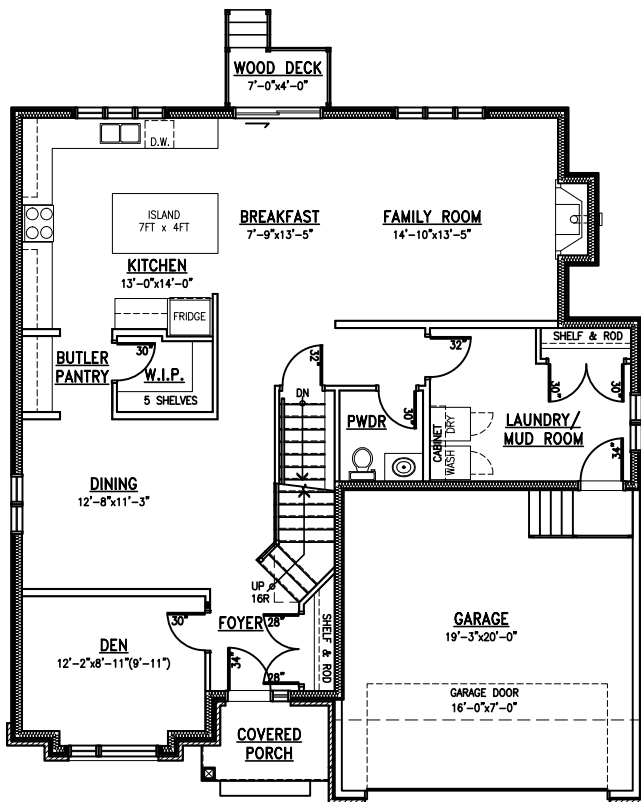


The Henry

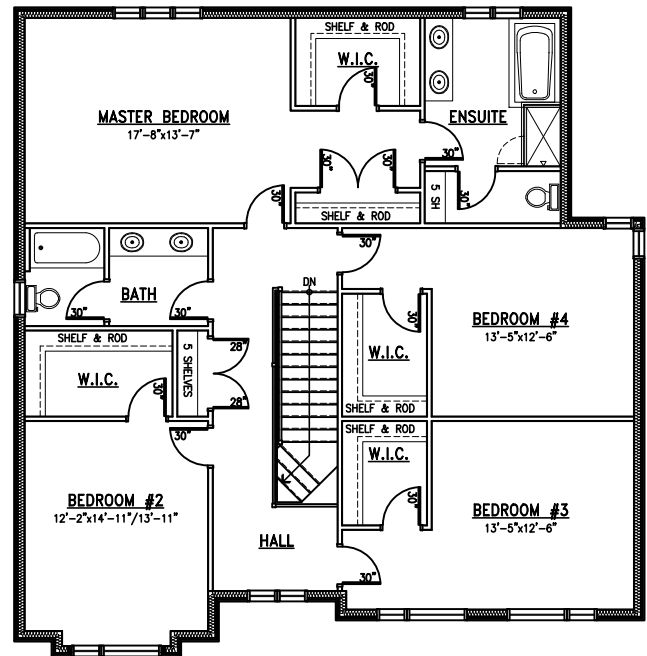
Minimum lot width: 50 FT

House Depth: apx. 47 FT

3,000 SQ FT



Main Floor



Second Floor

All measurements are approximate.
Actual usable floor space may vary from stated floor area.

Plans and specifications are subject to change without notice. E.&O.E.
February 4, 2021

MetricHomes.com



613-296-7000



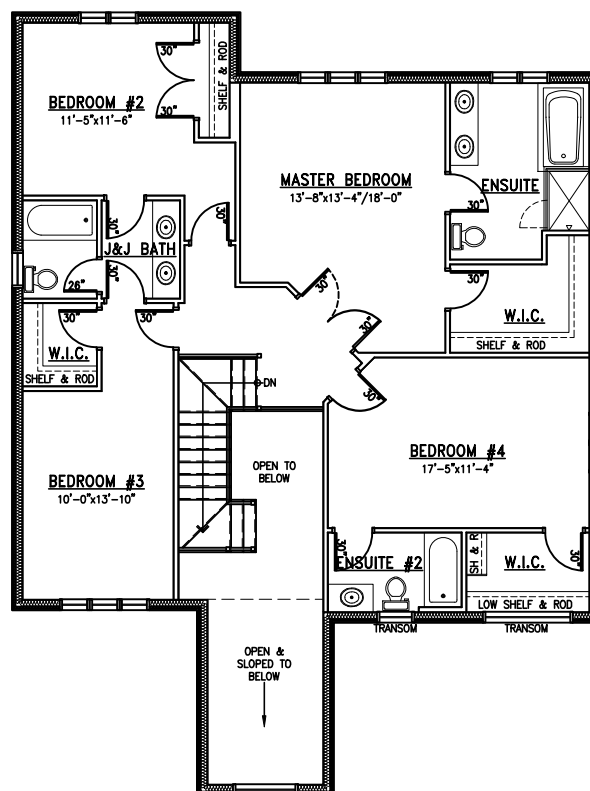
Incl. 113 SQ FT open to below



613-296-7000



Incl. 177 SQ FT open to below



Second Floor



613-296-7000



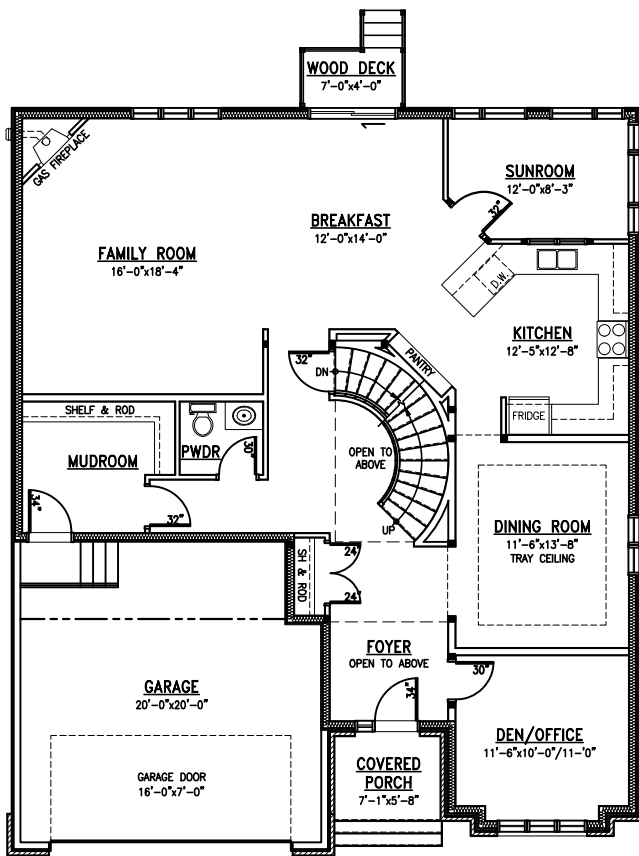
The William I

Minimum lot width: 50 FT

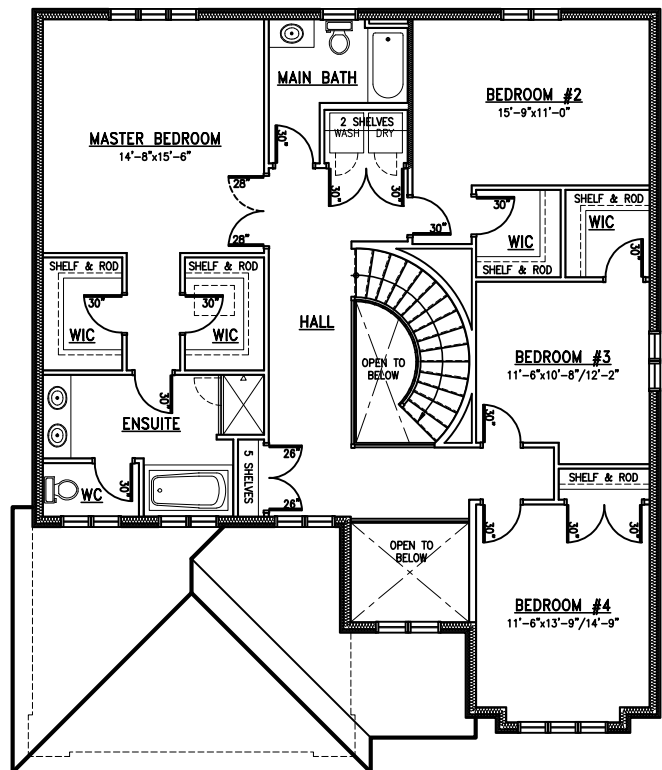
House Depth: apx. 50 FT

3,225 SQ FT

Incl. 85 SQ FT open to below



Main Floor



Second Floor

All measurements are approximate.
Actual usable floor space may vary from stated floor area.

Plans and specifications are subject to change without notice. E.&O.E.
May 2, 2023

MetricHomes.com



613-296-7000



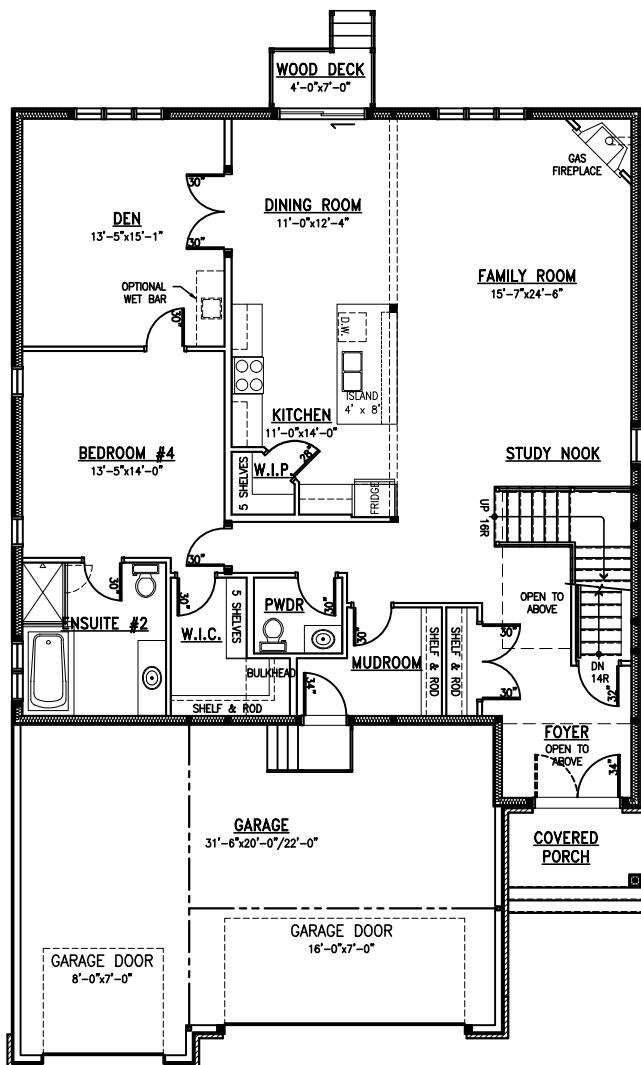
The Jayce I

Minimum lot width: 50 FT

House Depth: 64 FT

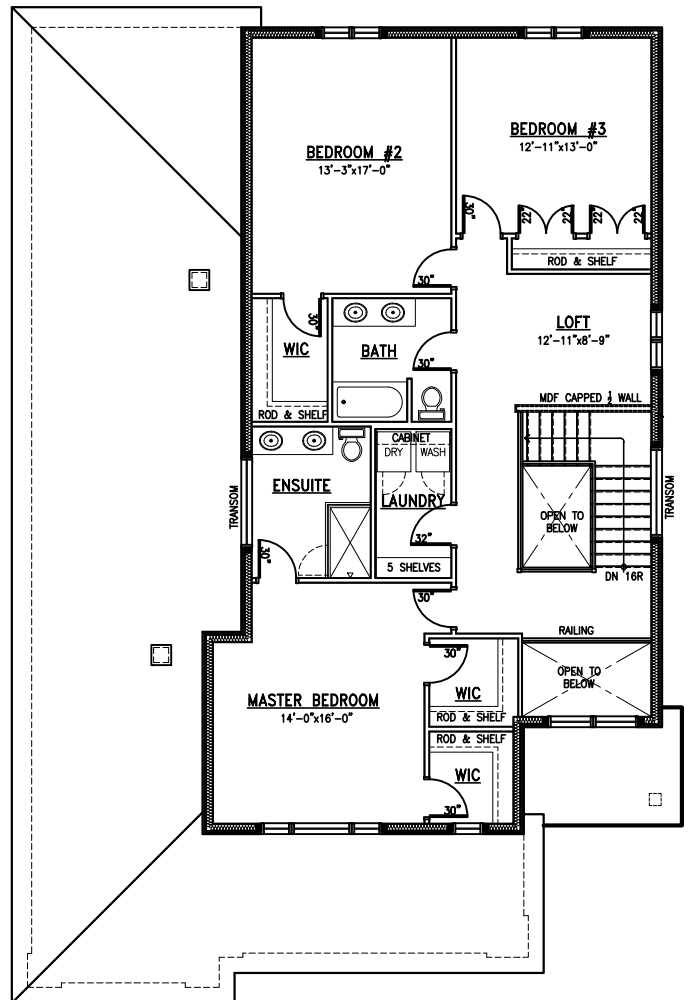
3,235 SQ FT

Incl. 75 SQ FT open to below



Main Floor
1,770 SQ FT

All measurements are approximate.
Actual usable floor space may vary from stated floor area.



Second Floor
1,465 SQ FT

Plans and specifications are subject to change without notice. E.&O.E.
March 27, 2023

MetricHomes.com



613-296-7000



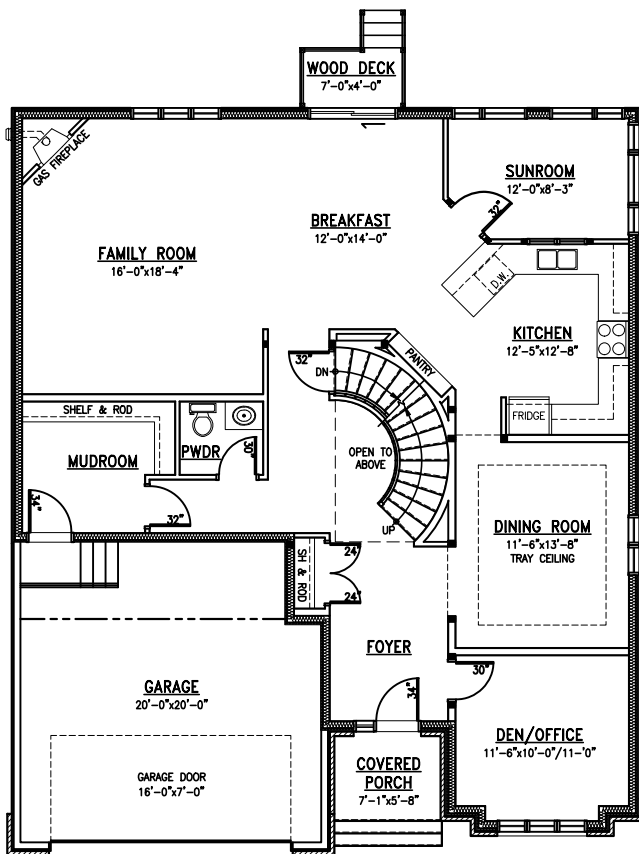
The William II

Minimum lot width: 50 FT

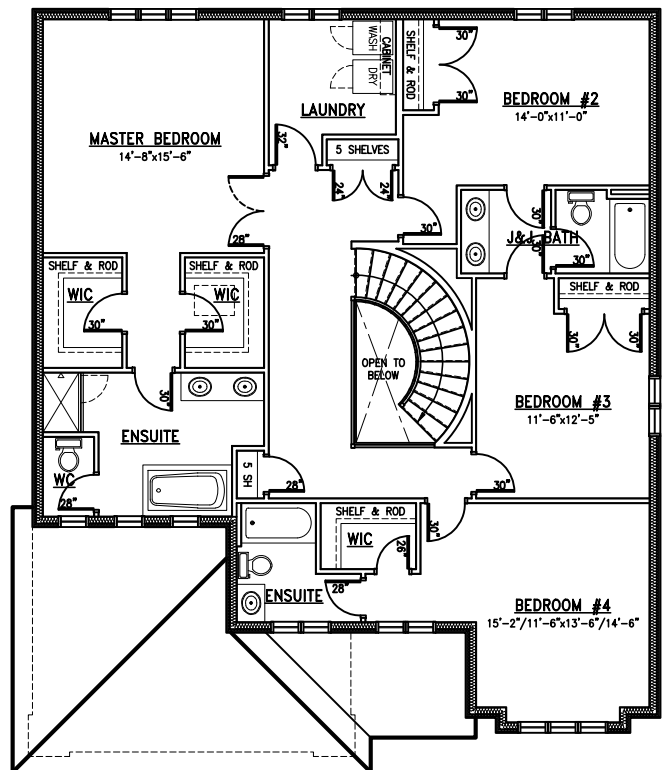
House Depth: apx. 50 FT

3,280 SQ FT

Incl. 35 SQ FT open to below



Main Floor



Second Floor

All measurements are approximate.
Actual usable floor space may vary from stated floor area.

Plans and specifications are subject to change without notice. E.&O.E.
May 2, 2023

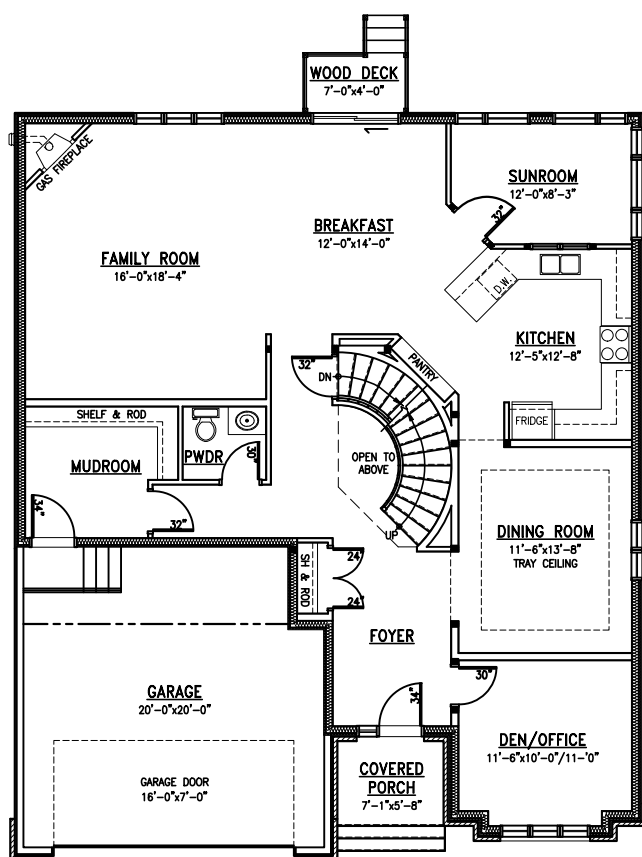
MetricHomes.com



613-296-7000



Incl. 25 SQ FT open to below



This floor plan shows a 4-bedroom house with a central staircase labeled "OPEN TO BELOW". The layout includes:

- MASTER BEDROOM** (14'-8"x15'-6") with an **ENSUITE** containing a toilet (WC), bathtub, and shower.
- BEDROOM #5** (10'-0"x10'-10")
- BEDROOM #4** (12'-7"x12'-1") with a **WIC** (Walk-In Closet).
- BEDROOM #3** (11'-6"x13'-2")
- BEDROOM #2** (11'-6"x13'-6"/14'-6") with a **WASH DRY** (Washing Machine/Dryer) area.
- LAUNDRY** room.
- MAIN BATH** with a bathtub, toilet, and shower.
- WIC** (Walk-In Closet) in the Master Bedroom.
- WASH DRY** (Washing Machine/Dryer) area in the Laundry room.
- WIC** (Walk-In Closet) in the Laundry room.
- WASH DRY** (Washing Machine/Dryer) area in the Laundry room.
- WASH DRY** (Washing Machine/Dryer) area in the Laundry room.

The plan also features several closets (WIC, CLOSET), a linen closet (LINEN), and a central staircase labeled "OPEN TO BELOW". Dimensions are provided for each room, and door swings are indicated by arcs.

613-296-7000



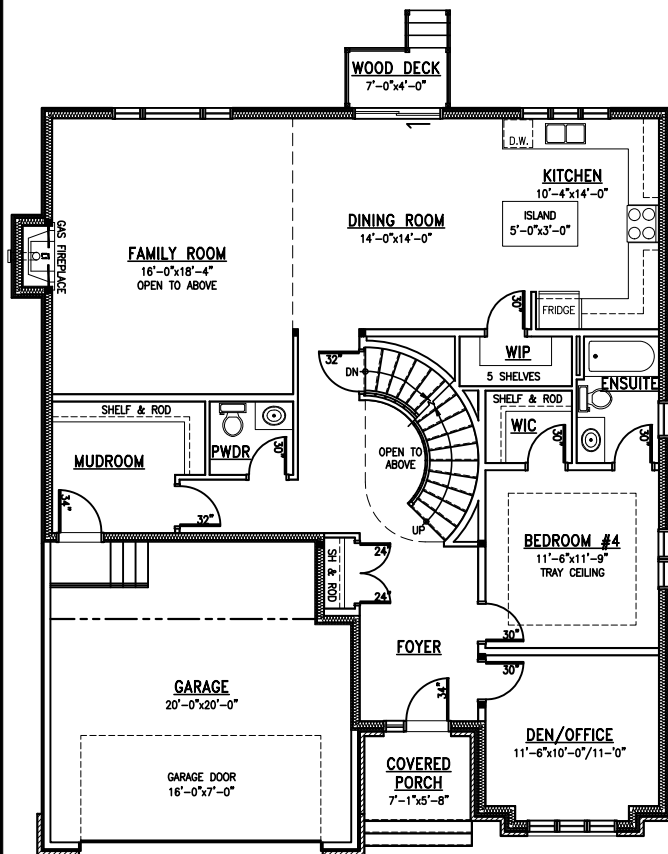
The William IV

Minimum lot width: 50 FT

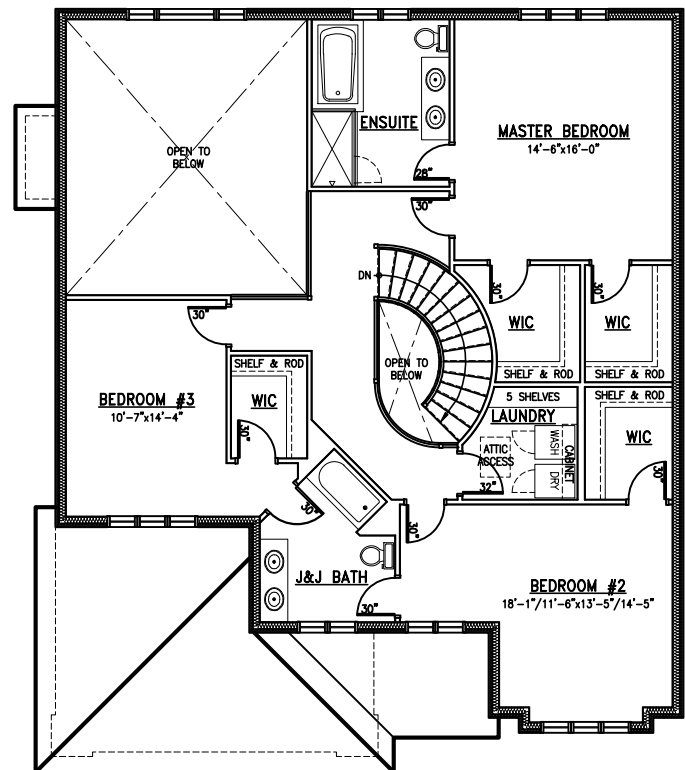
House Depth: apx. 50 FT

3,280 SQ FT

Incl. 325 SQ FT open to below



MainFloor



Second Floor

All measurements are approximate.
Actual usable floor space may vary from stated floor area.

Plans and specifications are subject to change without notice. E.&O.E.
May 2, 2023

MetricHomes.com



613-296-7000



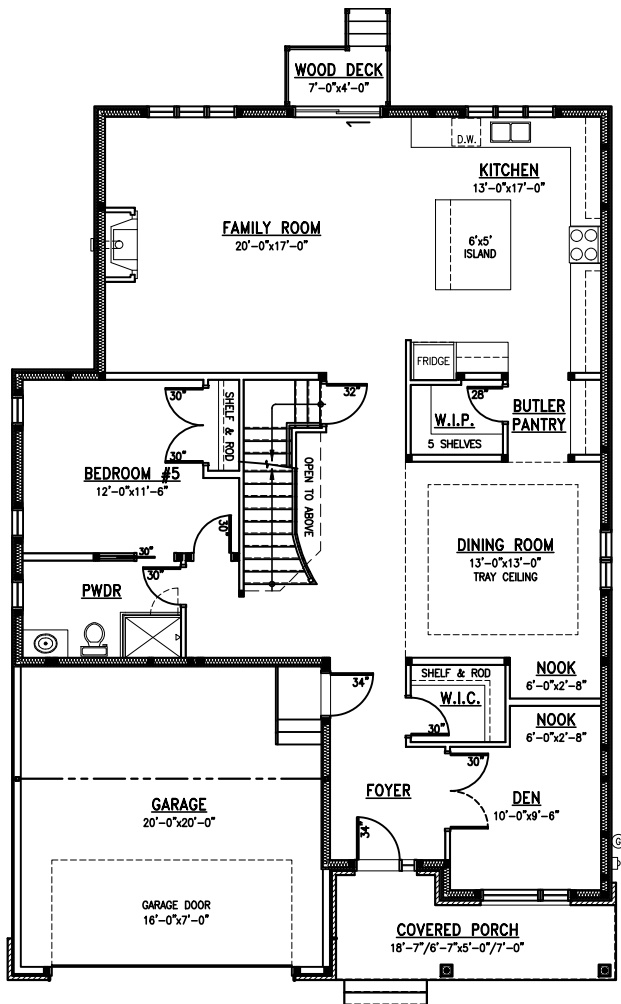
The Noah

Minimum lot width: 50 FT

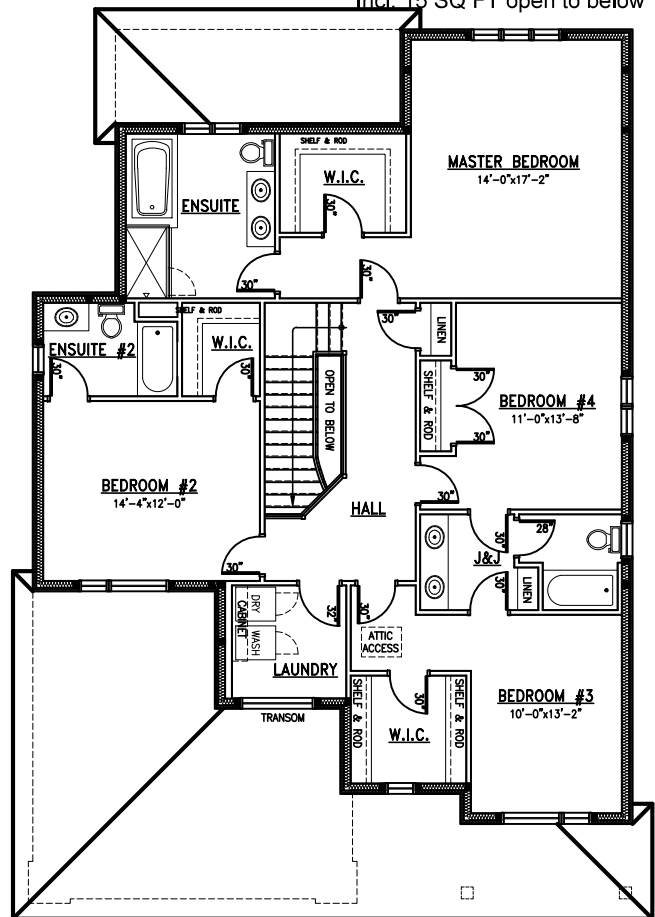
House Depth: apx. 58 FT

3,285 SQ FT

Incl. 15 SQ FT open to below



Main Floor



Second Floor

All measurements are approximate.
Actual usable floor space may vary from stated floor area.

Plans and specifications are subject to change without notice. E.&O.E.
April 5, 2023

MetricHomes.com



613-296-7000

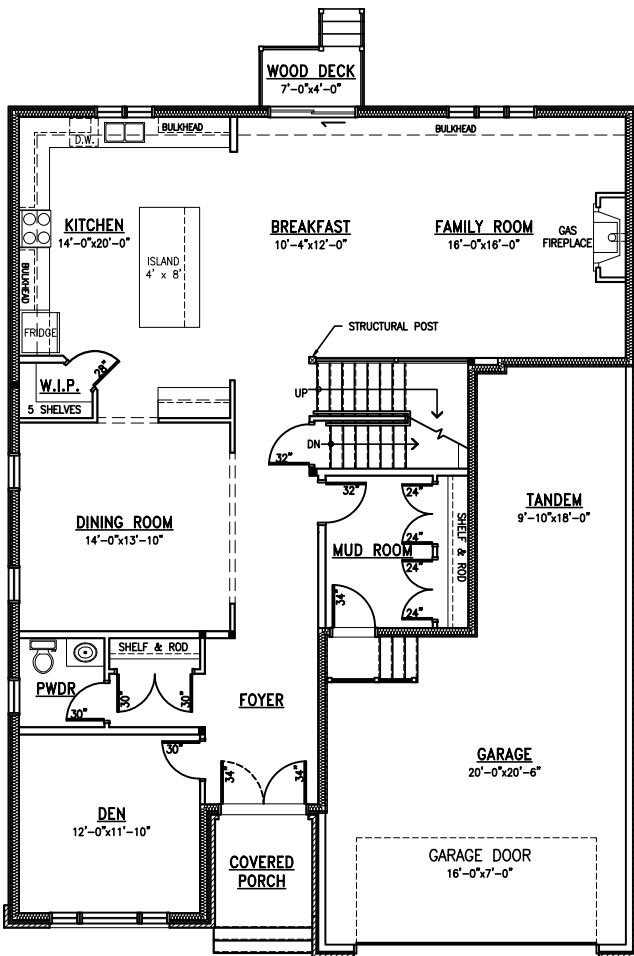


The Carson I

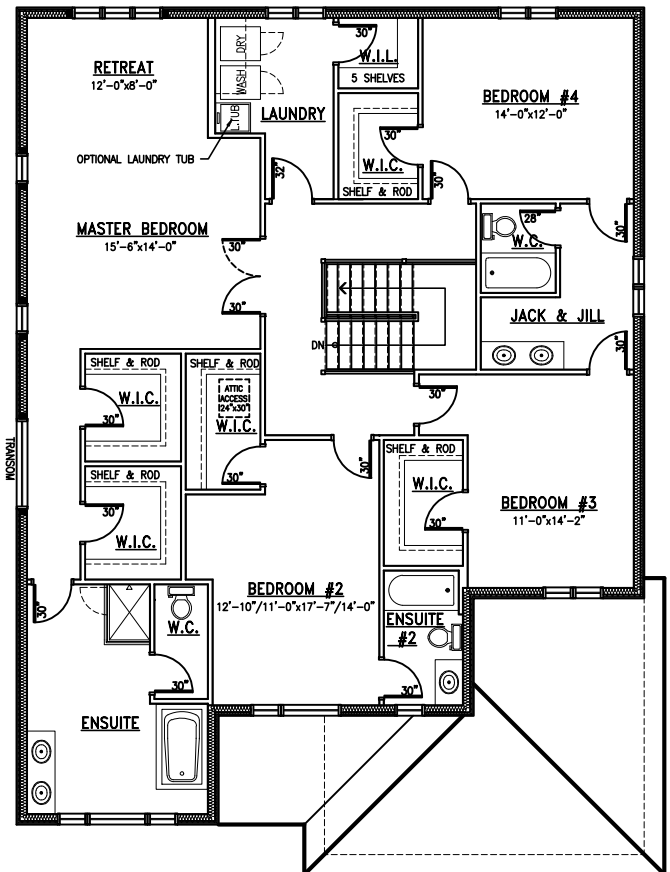
Minimum lot width: 50 FT

House Depth: apx. 57 FT

3,590 SQ FT



Main Floor



Second Floor

All measurements are approximate.
Actual usable floor space may vary from stated floor area.

Plans and specifications are subject to change without notice. E.&O.E.
November 20, 2023

MetricHomes.com



613-296-7000

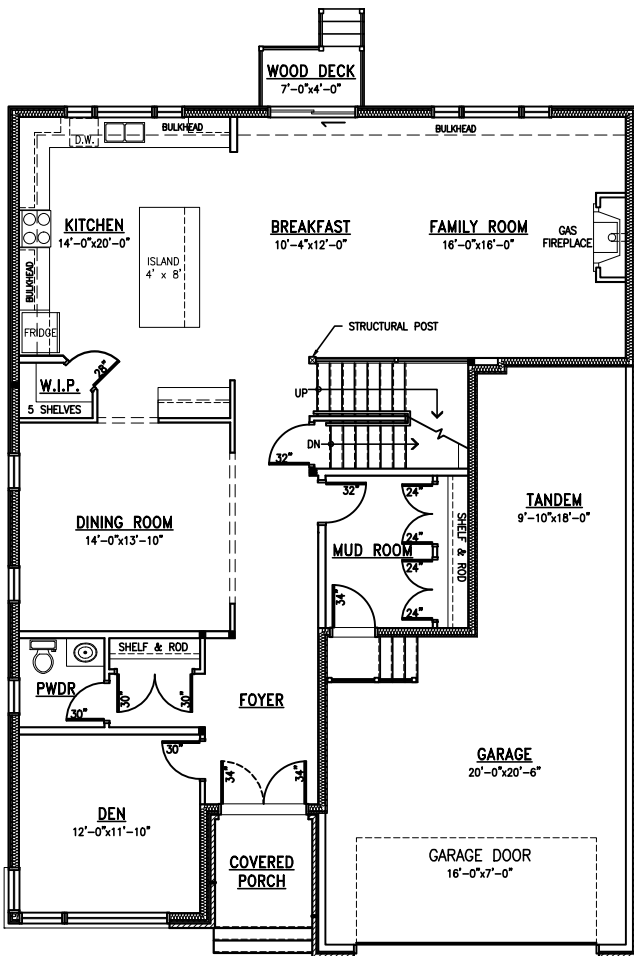


The Carson II

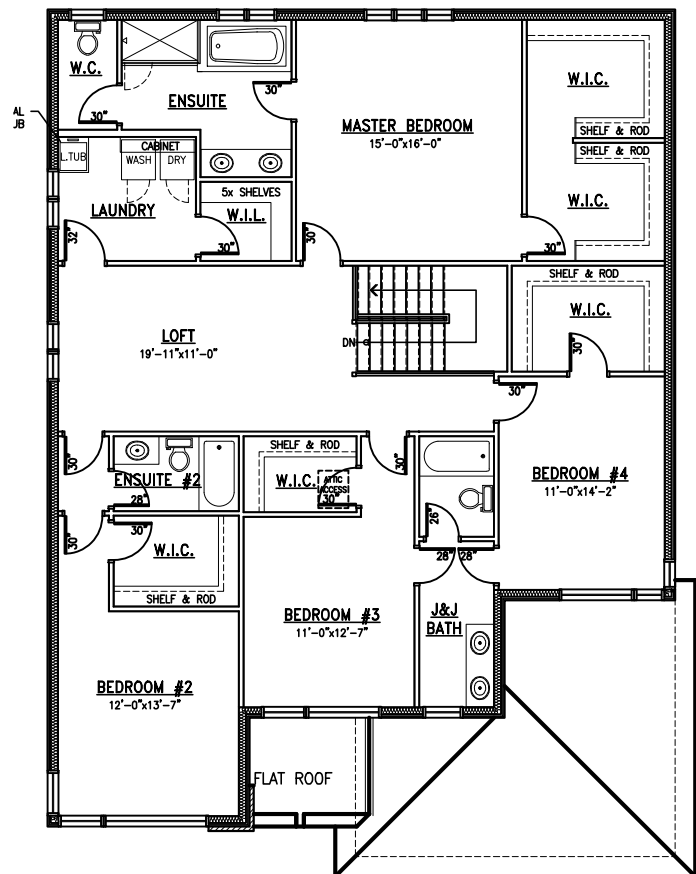
Minimum lot width: 50 FT

House Depth: apx. 57 FT

3,590 SQ FT



Main Floor



Second Floor

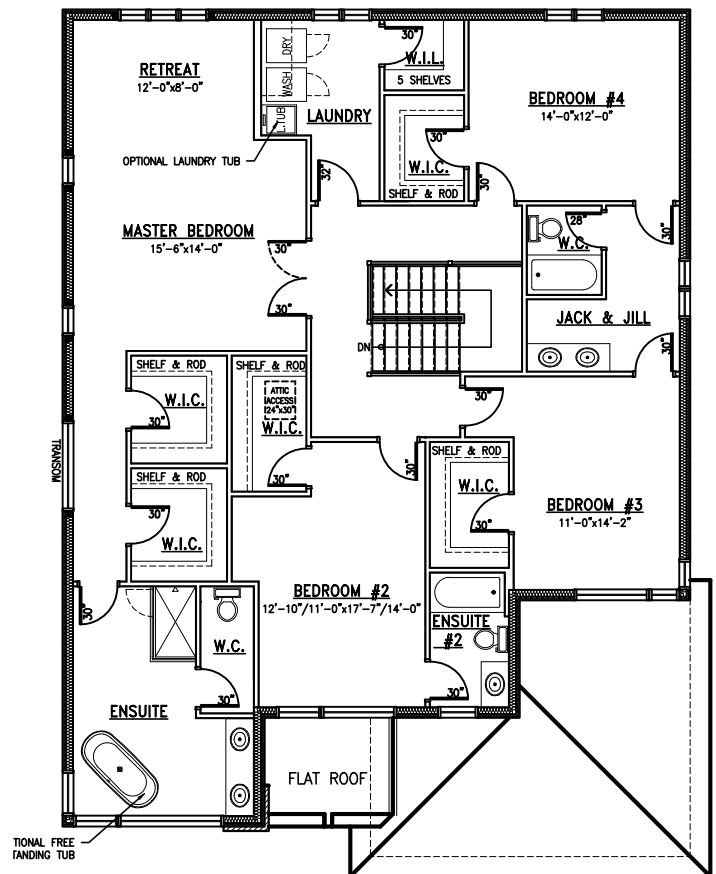
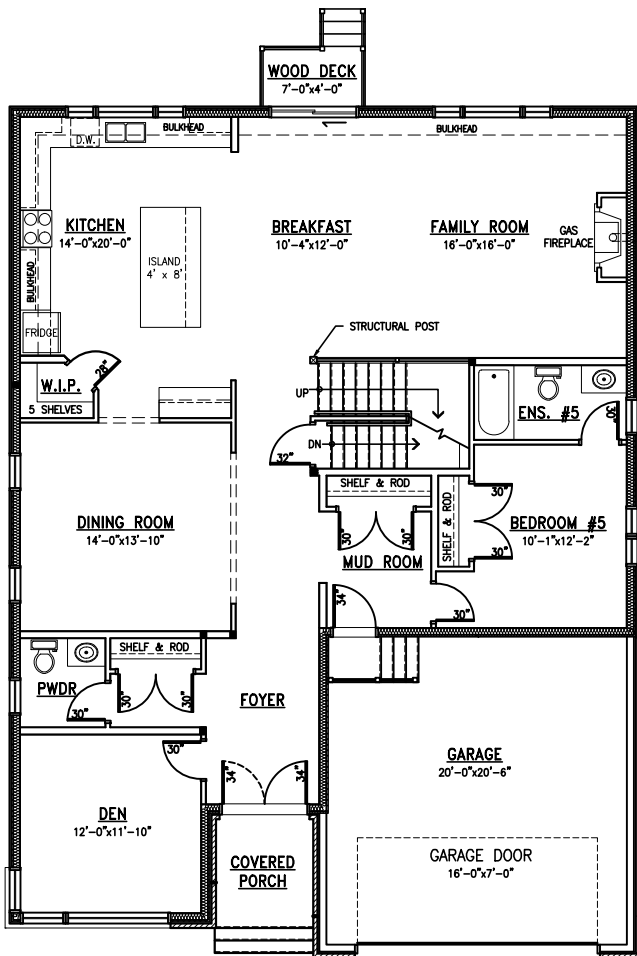
All measurements are approximate.
Actual usable floor space may vary from stated floor area.

Plans and specifications are subject to change without notice. E.&O.E.
April 20, 2023

MetricHomes.com

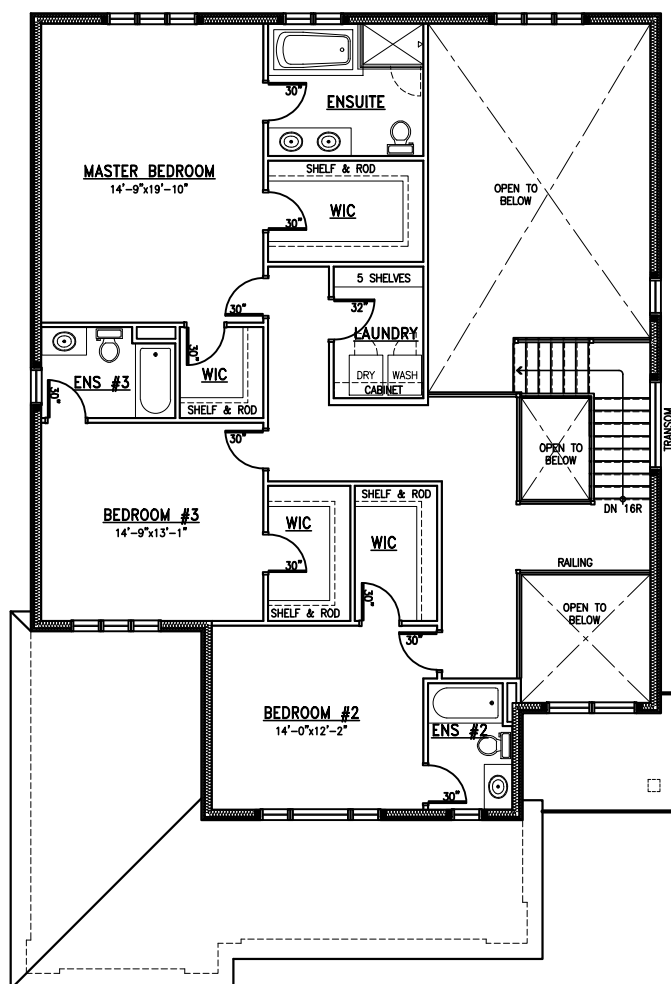


613-296-7000





Incl. 405 SQ FT open to below



613-296-7000



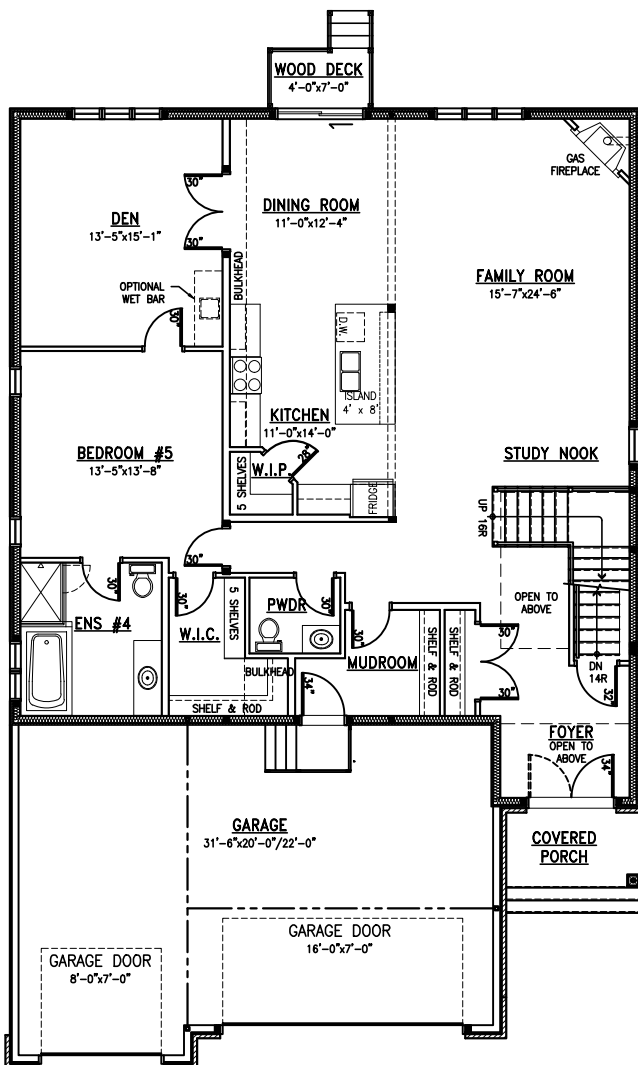
The Jayce III

Minimum lot width: 50 FT

House Depth: 64 FT

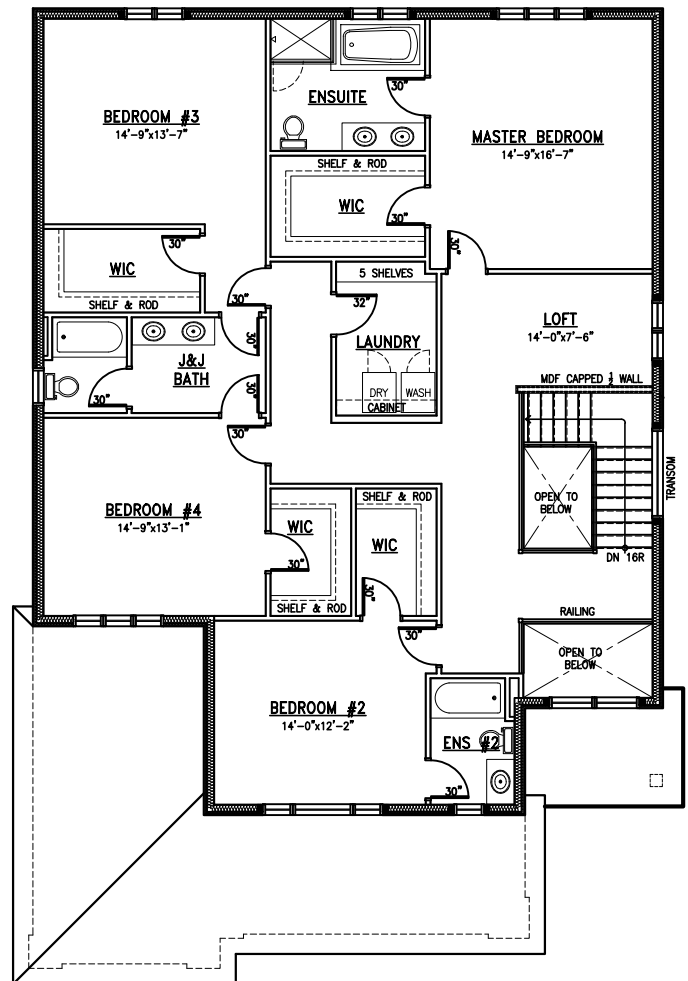
3,800 SQ FT

Incl. 75 SQ FT open to below



Main Floor
1,770 SQ FT

All measurements are approximate.
Actual usable floor space may vary from stated floor area.



Second Floor
2,030 SQ FT

Plans and specifications are subject to change without notice. E.&O.E.
April 24, 2023

MetricHomes.com



613-296-7000